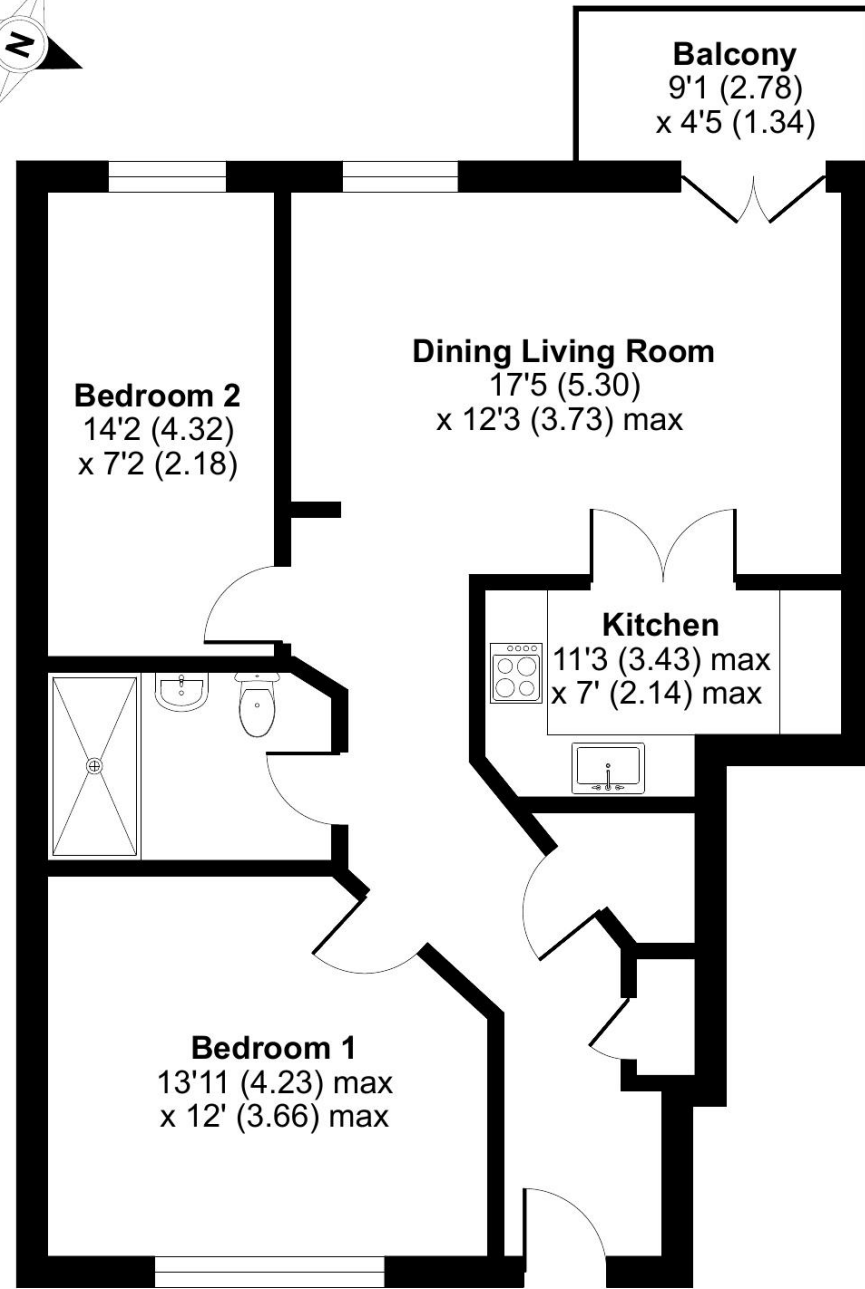


Pendower House, Roseland Parc, Tregony, Truro, TR2

Approximate Area = 759 sq ft / 70.51 sq m
For identification only - Not to scale



GROUND FLOOR

Floor plan produced in accordance with RICS Property Measurement 2nd Edition, Incorporating International Property Measurement Standards (IPMS2 Residential). © n/checom 2026. Produced for RV Services Limited (Retirement Villages). REF: 1438810

Talk to the team today to find out more or to arrange a visit:

01726 984038 | RoselandParcSales@retirementvillages.co.uk



IRC | Integrated Retirement Community



Roseland Parc

Stunning coastlines and a welcoming community

RETIREMENT VILLAGES

25 Pendower House



Rare opportunity for a ground floor two bed apartment in the sought after Pendower House.



Apartment



2 Bedrooms



1 Bathrooms

Key features:

- Private west facing balcony with stunning views
- Spacious and light throughout
- Sought after location
- EPC Rating: D

£340,000

Leasehold*



Stunning coastlines to explore and welcoming residents right here on your doorstep.

Located near the ancient yet bustling city of Truro with its historic cathedral, artisan shops, cafés, restaurants and the newly refurbished Hall for Cornwall Theatre. Truro, St Austell and Porthpean Golf Clubs and Porthpean sailing club are all a short 15-minute drive from Roseland Parc and there are also excellent walks around the village and in Trewithen Estate.

Amenities and features:

- Sub-tropical gardens and a stunning location
- 10 minutes from the beach
- Indoor heated swimming pool and wellness suite
- Minibus services to local areas
- A packed calendar of resident events

A rare opportunity to acquire a beautifully presented ground floor, two bedroom apartment in the highly sought after Pendower House. Enjoying a superb position, the property benefits from a private west facing terrace to the front, perfect for relaxing in the afternoon sun.

This spacious and light filled apartment offers a generous entrance hall leading to a principal bedroom overlooking the formal gardens, a contemporary bathroom with level access shower, and a second well proportioned double bedroom.

The impressive sitting and dining room features French doors opening onto a sunny balcony, capturing outstanding views across the Roseland Area of Outstanding Natural Beauty. The adjacent fully fitted kitchen includes integrated appliances comprising a Bosch waist height electric oven, matching hob, extractor hood, and Bosch washing machine, along with a freestanding under counter fridge and freezer.

Further benefits include electric heating throughout.

