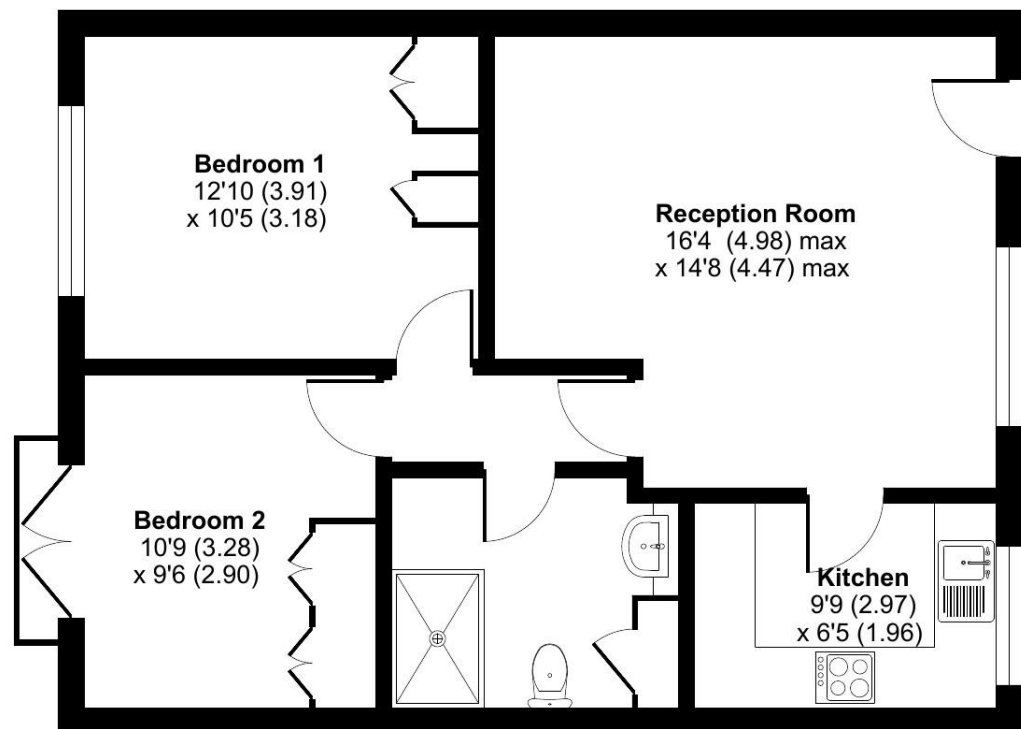
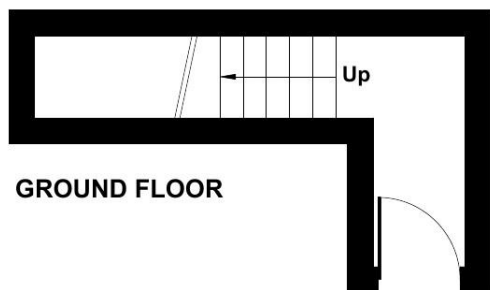


Elmbridge Village, Cranleigh, GU6

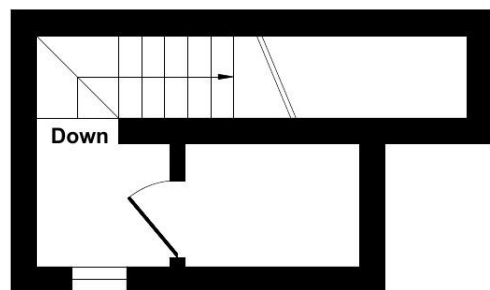
Approximate Area = 788 sq ft / 73.2 sq m
For identification only - Not to scale



FIRST FLOOR 2



GROUND FLOOR



FIRST FLOOR 1



Floor plan produced in accordance with RICS Property Measurement Standards incorporating International Property Measurement Standards (IPMS2 Residential). © nichecom 2024. Produced for Retirement Villages. REF: 1187924

Talk to the team today to find out more:

01483 672 629
ElmbridgeVillageSales@retirementvillages.co.uk

Elmbridge Village
Cranleigh
Surrey
GU6 8TR



Elmbridge Village

RETIREMENT
VILLAGES

*Friendly and Engaging with
Amenities to suit all..*



9 Day Court

**RENTAL INCLUSIVE OF
SERVICE CHARGE**

*Modernised two bedroom first
floor property with views over
the gardens and close to all the
amenities*

£2,650
Monthly inclusive charge



2 Bedrooms



1 Bathrooms



Apartment

Key features:

- Rental fully inclusive of service charges
- Fully refurbished to include new kitchen and bathroom
- Two bedrooms
- EPC Rating: C



A recently modernised two bedroom first floor property. Stairs from the ground floor lead up to the main living/dining room. Door opens to brand new fully fitted kitchen with slimline dishwasher, fridge freezer, electric oven and hob.

Two bedrooms with fitted cupboards.

Wet room with level access shower, low level wc and wash hand basin. Utility cupboard with washer dryer.

Elmbridge is a well-established village with 276 homes, including bungalows and apartments, set within 27 acres of landscaped grounds. Located near the charming Cranleigh village, Elmbridge offers residents a range of amenities such as a restaurant, a lively bar, village hall, hair salon, croquet lawn, on-site store, library, and regular doctor's surgeries. Those with green fingers can enjoy our lively allotments, and there's a beautiful walking meadow and daily bus service for a well-rounded lifestyle.

Elmbridge Village is a thriving community where you can join in everything, or just simply sit back and relax.

Packed full of amenities and features:

- Nature walk and allotments
- On site restaurant, bar and lounge
- A village shop
- Wellness centre
- Hair salon
- A packed calendar of resident events

Elmbridge Village is just outside Cranleigh, eight miles southeast of Guildford. It has a vibrant high street made up of independent shops, cafés, restaurants and typical amenities such as supermarkets, leisure and health centres. From festivals and arts to the Cranleigh Bowls Club and the Cranleigh Cricket Academy, there is plenty going on year round.

