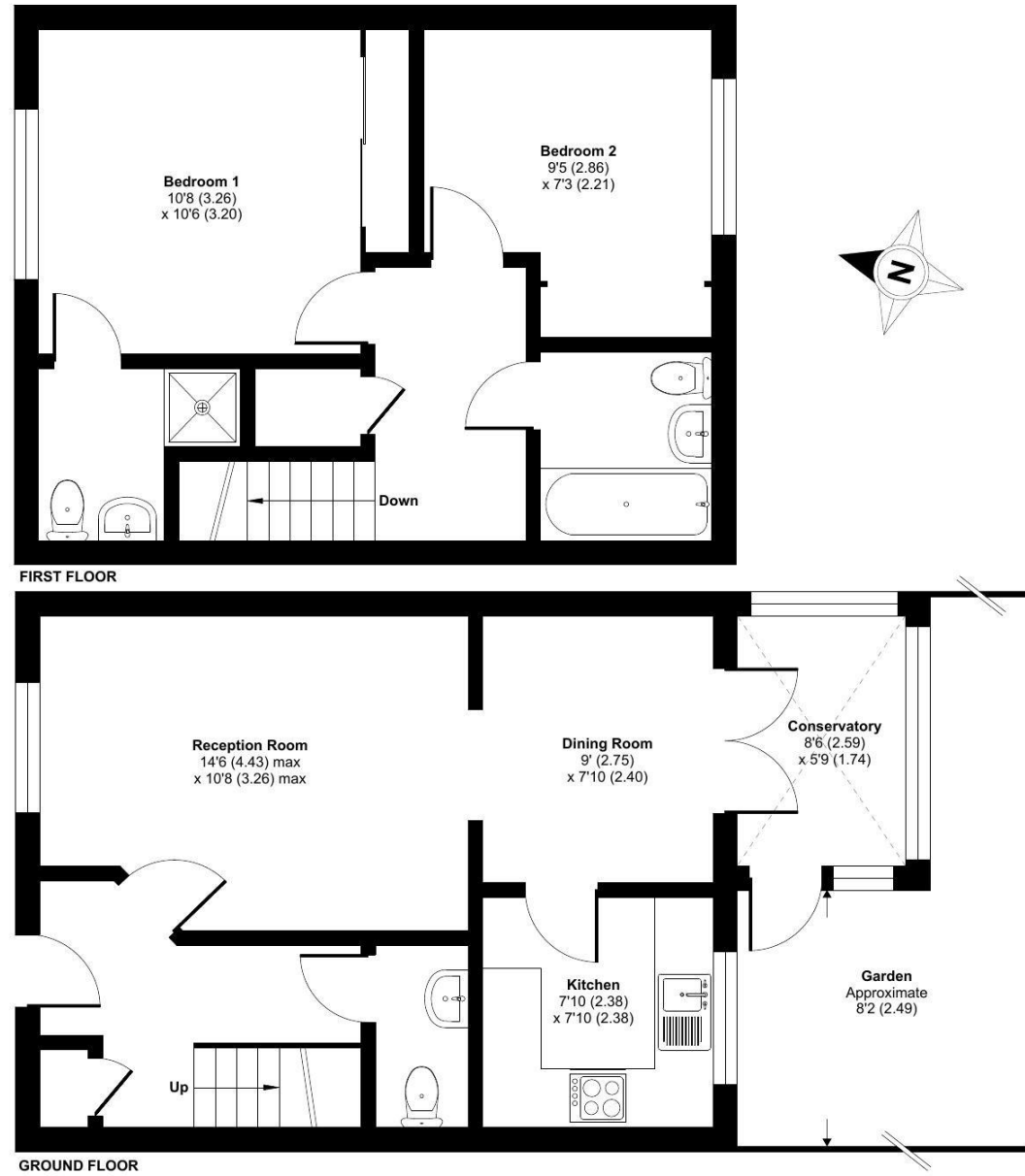


Cedars Village, Chorleywood, Rickmansworth, WD3

Approximate Area = 848 sq ft / 78.7 sq m
For identification only - Not to scale



Floor plan produced in accordance with RICS Property Measurement 2nd Edition, incorporating International Property Measurement Standards (IPMS2 Residential). © nrichcom 2025. Produced for Retirement Security Limited. REF: 1309789

Talk to the team today to find out more:

01923 913 871

CedarsVillageSales@retirementvillages.co.uk

Cedars Village
Chorleywood
Hertfordshire
WD3 5GF



A welcoming community that puts wellbeing & lifestyle first.

RETIREMENT VILLAGES



8 Marriot Terrace

Positioned close to the mansion house is this two bedroom cottage with conservatory. The property has a bathroom and en-suite and a private enclosed patio area.

£335,000.00

Other charges apply

Leasehold



Cottage

2 Bedrooms

2 Bathrooms

Key features:

- Mid terraced Cottage
- Two bedrooms
- Private enclosed patio garden
- EPC Rating: C



Cedars Village is a haven for walkers, golfers and wildlife enthusiasts..

Packed full of amenities and features:

- Set within 22 acres of gardens, meadows and orchards
- Grade II Listed mansion
- Conservatory
- A packed calendar of resident events
- Woodland walks and games lawn

Neighbouring towns include Watford, Hemel Hempstead and High Wycombe, perfect for trips out and bustling shopping centres. With such easy travel links into London, take advantage of the many theatres, museums, concerts, shops and restaurants the city has to offer. Or head out to the Chiltern Hills for miles and miles of hiking and cycling trails, pubs and farm shops.



Terraced cottage well positioned on Marriot Terrace with close access to the mansion house and communal facilities. Entrance hallway, living room with arch to dining area, original pine wood kitchen with a range of units, freestanding appliances including; a white washer/dryer (make unknown), a white Beko fridge/freezer, a white Beko dishwasher and a Beko cooker/hob. From the dining room leads to a sunroom with a back door to a private, enclosed patio area. Off hallway a downstairs WC, built-in cupboard. Staircase leading to two bedrooms both with built-in wardrobes, ensuite shower room and family bathroom with bath, built-in cupboard on landing. The property is heated with a Worcester Combi-Boiler providing the radiator central heating system. Enclosed private southwest facing patio area and beautifully maintained communal grounds

Cedars Village sits in an idyllic spot set opposite the common, away from the main road amidst 22 acres of landscaped gardens. Built around the exclusive Grade II listed mansion house with its Victorian conservatory it boasts an unrivalled ambience. Newly refurbished to a high standard, facilities include bistro-bar, library, convenience store and croquet/putting lawn. Opening soon are the restaurant, year-round conservatory, hair salon, health centre and activities room. Cedars Village provides comfort and security where community and lifestyle are of paramount importance.