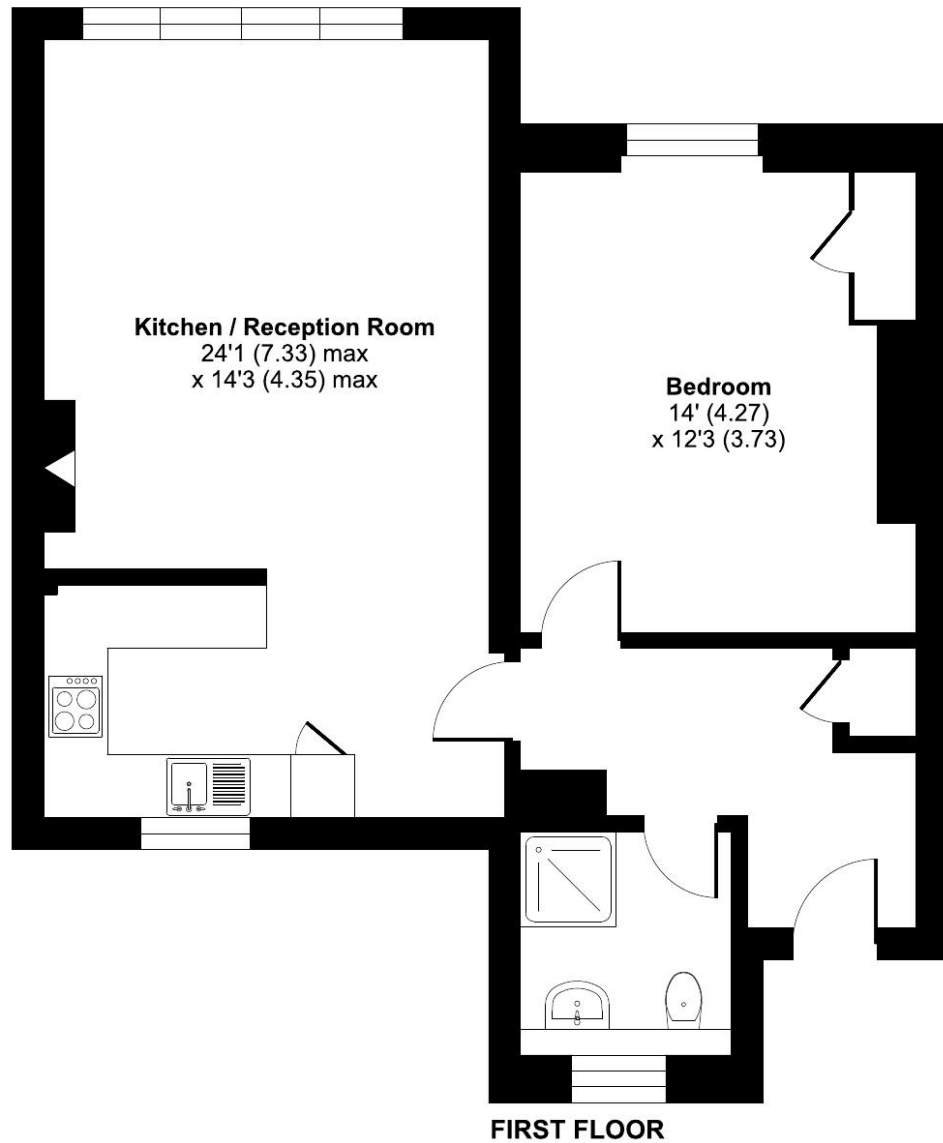


Cedars Village, Chorleywood, Rickmansworth, WD3

Approximate Area = 667 sq ft / 61.9 sq m
For identification only - Not to scale



Talk to the team today to find out more or to arrange a visit:

01923 913 871 | CedarsVillageSales@retirementvillages.co.uk



© IRC | Integrated Retirement Community



Cedars Village

Cedars Village is a haven for walkers, golfers and wildlife enthusiasts.

RETIREMENT
VILLAGES

6 THE CEDARS



A beautiful apartment with period features, including high ceilings. Forming part of the historic grade II listed Mansion House, with attractive views over the gardens.



Apartment



1 Bedrooms



1 Bathrooms

Key features:

- Mansion House period features
- First floor apartment with lift access
- Recently renovated
- EPC Rating: D

£3,250

Monthly inclusive charge*



Cedars Village is a haven for walkers, golfers and wildlife enthusiasts.

Neighbouring towns include Watford, Hemel Hempstead and High Wycombe, perfect for trips out and bustling shopping centres. With such easy travel links into London, take advantage of the many theatres, museums, concerts, shops and restaurants the city has to offer. Or head out to the Chiltern Hills for miles and miles of hiking and cycling trails, pubs and farm shops.

Amenities and features:

- Set within 22 acres of gardens, meadows and orchards
- Grade II Listed mansion
- Conservatory
- A packed calendar of resident events
- Woodland walks and games lawn



First floor conversion apartment forming part of the historic grade II listed building, renovated to a high standard.

Living room with large sash windows, high ceilings and a feature fireplace. Open-plan, modern fitted kitchen with a range of built-in appliances. Double bedroom with feature fireplace and a built-in cupboard. Fully tiled shower room with walk-in shower.

There is a wall mounted call monitor for emergency assistance and a personal alarm necklace to alert a first responder. Lift and stairs to all floors.

Cedars Village, set in 22 acres, is built around the exclusive Grade II listed mansion house which is the focal point of the community, providing facilities which include Victorian conservatory, Village Hall, restaurant, bistro, library, hobbies room, laundry, convenience store and croquet/putting lawn. In addition to the substantial grounds of Cedars Village, the adjacent Chorleywood common provides a wonderful variety of walks. With outstanding transport links into London via J18 of the M25 the village also benefits from being close to Chorleywood Village with its shops, restaurants, Metropolitan tube and rail station into Central London (Marylebone 33 minutes)

