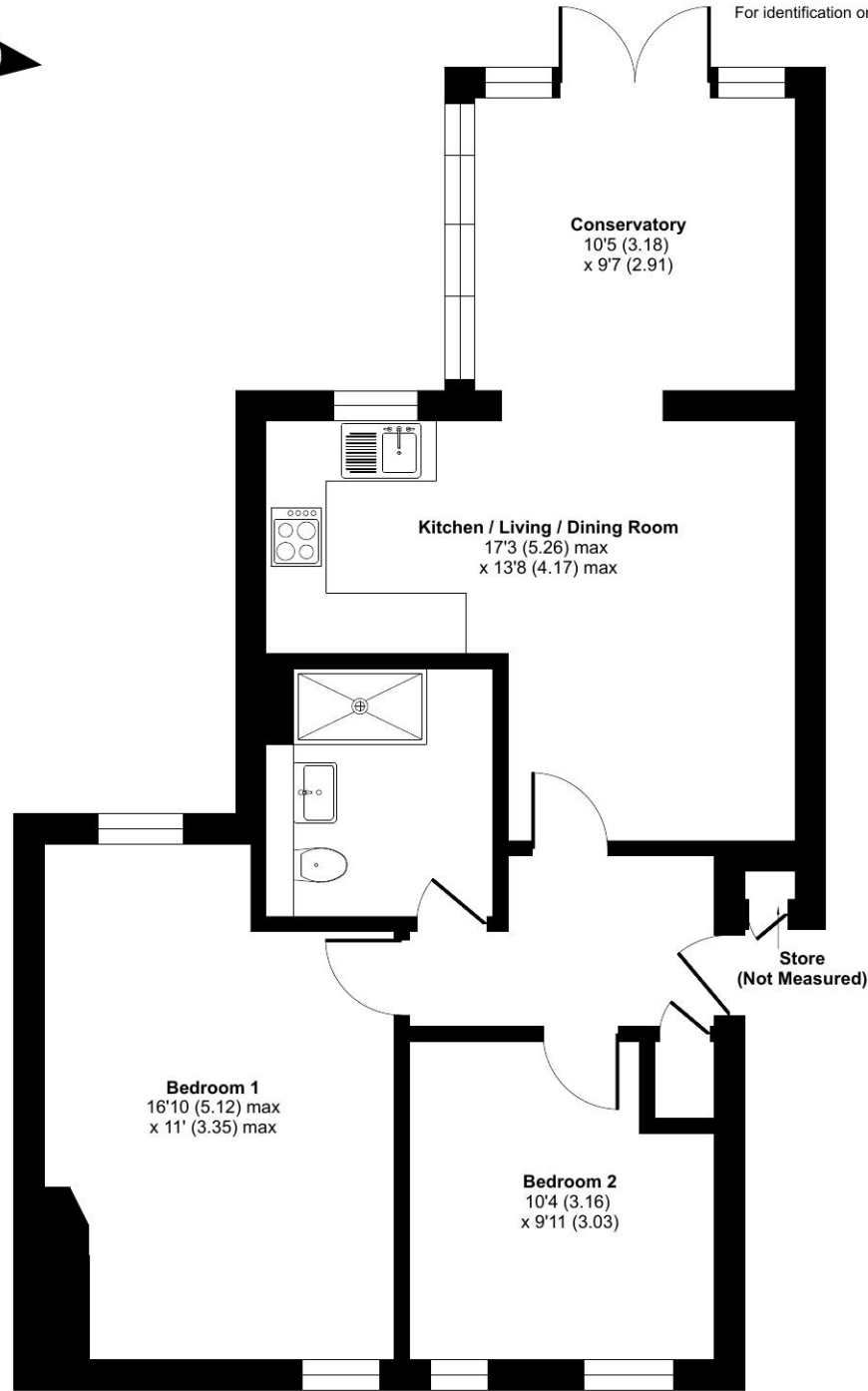


Furniss Court, Elmbridge Village, Cranleigh, GU6

Approximate Area = 714 sq ft / 66.3 sq m (excludes store)
For identification only - Not to scale



GROUND FLOOR

Talk to the team today to find out more or to arrange a visit:

01483 672 629 | ElmbridgeVillageSales@retirementvillages.co.uk



IRC | Integrated Retirement Community



Elmbridge Village

RETIREMENT VILLAGES

Elmbridge Village is a thriving community where you can join in everything, or simply relax.

6 FURNISS COURT



A beautifully modernised bungalow offering bright, comfortable easy living with private garden views and easy access to the village restaurant and amenities.



Bungalow



2 Bedrooms



1 Bathrooms



Conservatory

Key features:

- Modernised bungalow
- Close to restaurant
- Fabulous community
- EPC Rating: C

£435,000

Leasehold*



Elmbridge Village is a thriving community where you can join in everything, or simply relax.

Elmbridge is just outside Cranleigh, eight miles southeast of Guilford. It has a vibrant high street made up of independent shops, cafes, restaurants and typical amenities such as supermarkets, leisure and health centres. From festivals and arts to the Cranleigh Bowls Club and the Cranleigh Cricket Academy, there is plenty going on year round.

Amenities and features:

- Nature walk and allotments
- On site restaurant, bar and lounge
- A village shop
- Wellness centre
- Hair salon
- A packed calendar of events

Perfectly placed for ease of access to Elmbridge Manor, 6 Furniss Court is a beautifully presented bungalow designed for comfortable, easy living. Inside, the property offers a bright and airy sitting room which leads to the conservatory featuring large windows that fill the space with natural light. French doors to the patio and gardens create a warm, welcoming feel. The adjoining kitchen is fully fitted with modern appliances, including an integrated dishwasher, washer dryer, fridge freezer, eye-level electric oven and electric hob, providing both style and practicality for everyday living.

Both bedrooms have garden views and the spacious master bedroom includes built-in wardrobes with the 2nd double bedroom offering additional space for guests. The modern bathroom with a walk-in shower, adds further convenience.

