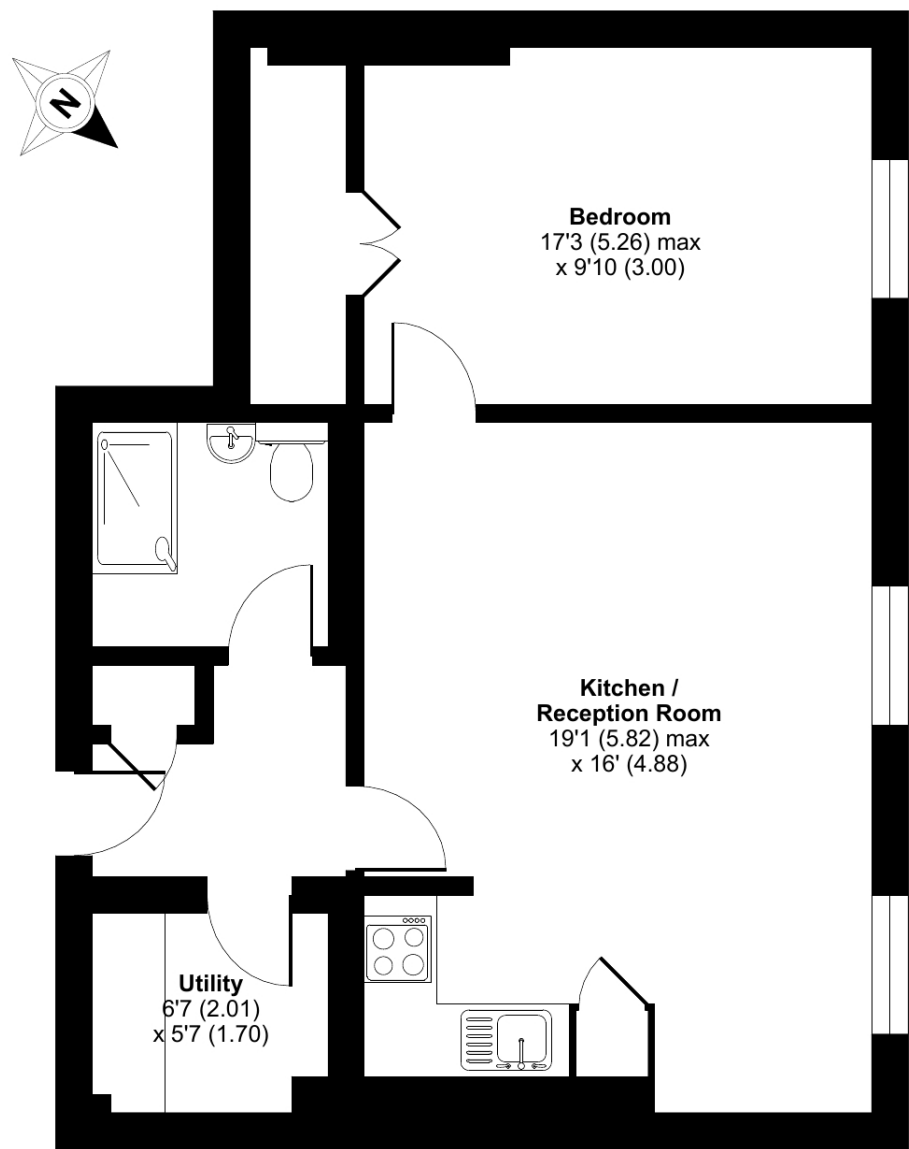


The Cedars, Cedars Village,  
Finch Green, Chorleywood, Rickmansworth, WD3

Approximate Area = 585 sq ft / 54.3 sq m  
For identification only - Not to scale



FIRST FLOOR

Floor plan produced in accordance with RICS Property Measurement 2nd Edition, incorporating International Property Measurement Standards (IPMS2 Residential). © n/checom 2025. Produced for Retirement Security Limited. REF: 1294524

Talk to the team today to find out more:

01923 913 871  
CedarsVillageSales@retirementvillages.co.uk

Cedars Village  
Chorleywood  
Hertfordshire  
WD3 5GL



# Cedars Village

RETIREMENT  
VILLAGES

*A haven for walkers, golfers and  
wildlife enthusiasts*



## 5 The Cedars

*A stunning Mansion House  
apartment available for rental.  
Refurbished, one bedroom on the  
first floor overlooking the gardens to  
the front of the house.*

**£3,250**  
**Monthly inclusive charge**



1 Bedrooms



1 Bathrooms



Apartment

Key features:

- **Mansion House apartment with period features**
- **Refurbished**
- **Fantastic views of grounds**
- **EPC Rating: TBC**





First floor conversion apartment forming part of the historic grade II listed building. Entrance with Utility room housing a fitted washer/dryer, bright living room with high ceilings and period features, large windows with views over the village meadow. Open-plan, fully fitted kitchen with built-in appliances, modern shower room with walk-in shower, double bedroom with large built-in wardrobe. There is a wall mounted call monitor for emergency assistance and a personal alarm necklace to alert a first responder.

Cedars Village sits in an idyllic spot set opposite the common, away from the main road amidst 22 acres of landscaped gardens. Built around the exclusive Grade II listed mansion house with its Victorian conservatory it boasts an unrivalled ambience. Newly refurbished to a high standard, facilities include bistro-bar, library, convenience store and croquet/putting lawn. Opening soon are the restaurant, year-round conservatory, hair salon, health centre and activities room. Cedars Village provides comfort and security where community and lifestyle are of paramount importance.

# Cedars Village is a haven for walkers, golfers and wildlife enthusiasts.

*Packed full of amenities and features:*

- **Set within 22 acres of gardens, meadows and orchards**
- **Grade II Listed mansion**
- **Conservatory**
- **A packed calendar of resident events**
- **Woodland walks and games lawn**

Neighbouring towns include Watford, Hemel Hempstead and High Wycombe, perfect for trips out and bustling shopping centres. With such easy travel links into London, take advantage of the many theatres, museums, concerts, shops and restaurants the city has to offer. Or head out to the Chiltern Hills for miles and miles of hiking and cycling trails, pubs and farm shops.

