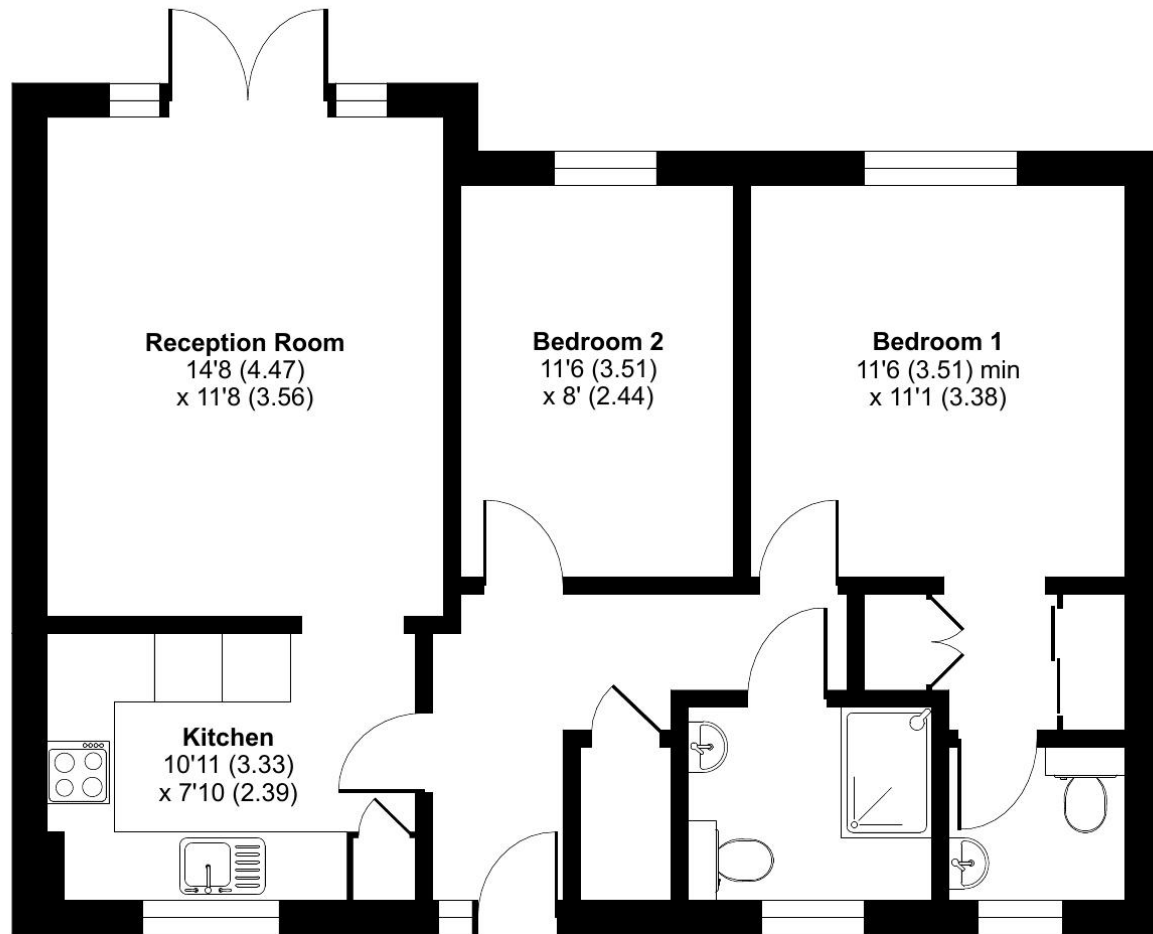


Elmbridge Village, Cranleigh, GU6

Approximate Area = 688 sq ft / 63.9 sq m

For identification only - Not to scale



GROUND FLOOR

Elmbridge Village

Elmbridge Village is a thriving community where you can join in everything, or simply relax.

RETIREMENT
VILLAGES

5 FOREST WALK



This newly modernised bungalow offers light, contemporary accommodation in a peaceful village setting with views to the gardens and just a short walk to all the amenities.



Bungalow



2 Bedrooms



2 Bathrooms

Key features:

- Newly modernised
- 2 bathrooms
- Garden views
- EPC Rating: TBC

Talk to the team today to find out more or to arrange a visit:

01483 672 629 | ElmbridgeVillageSales@retirementvillages.co.uk



© IRC | Integrated Retirement Community



£435,000

Leasehold*



Elmbridge Village is a thriving community where you can join in everything, or simply relax.

Elmbridge is just outside Cranleigh, eight miles southeast of Guilford. It has a vibrant high street made up of independent shops, cafes, restaurants and typical amenities such as supermarkets, leisure and health centres. From festivals and arts to the Cranleigh Bowls Club and the Cranleigh Cricket Academy, there is plenty going on year round.

Amenities and features:

- Nature walk and allotments
- On site restaurant, bar and lounge
- A village shop
- Wellness centre
- Hair salon
- A packed calendar of events

This newly modernised bungalow offers light, contemporary accommodation in a peaceful village setting. The brand new kitchen features integrated appliances including a Lamona dishwasher, fridge freezer and induction hobs, Hotpoint washer dryer and NEFF eye level oven, creating a practical and attractive space for everyday living. A bright sitting room opens through French doors onto a delightful patio, perfect for enjoying the sunshine and outdoor seating.

The principal bedroom benefits from a dressing area with fitted wardrobes and en suite cloakroom, providing a comfortable private retreat. There is a well-proportioned second bedroom, ideal for guests or use as a study, together with a separate modern shower room for added convenience.

Elmbridge is a well-established village with 276 homes, including bungalows and apartments, set within in 27 acres of landscaped grounds. Located near the charming Cranleigh village, Elmbridge offers residents a range of amenities such as a restaurant, a lively bar, village hall, hair salon, croquet lawn, on-site store, library, and regular doctor's surgeries. Those with green fingers can enjoy our lively allotments, and there's a beautiful walking meadow and daily bus service for a well-rounded lifestyle.

