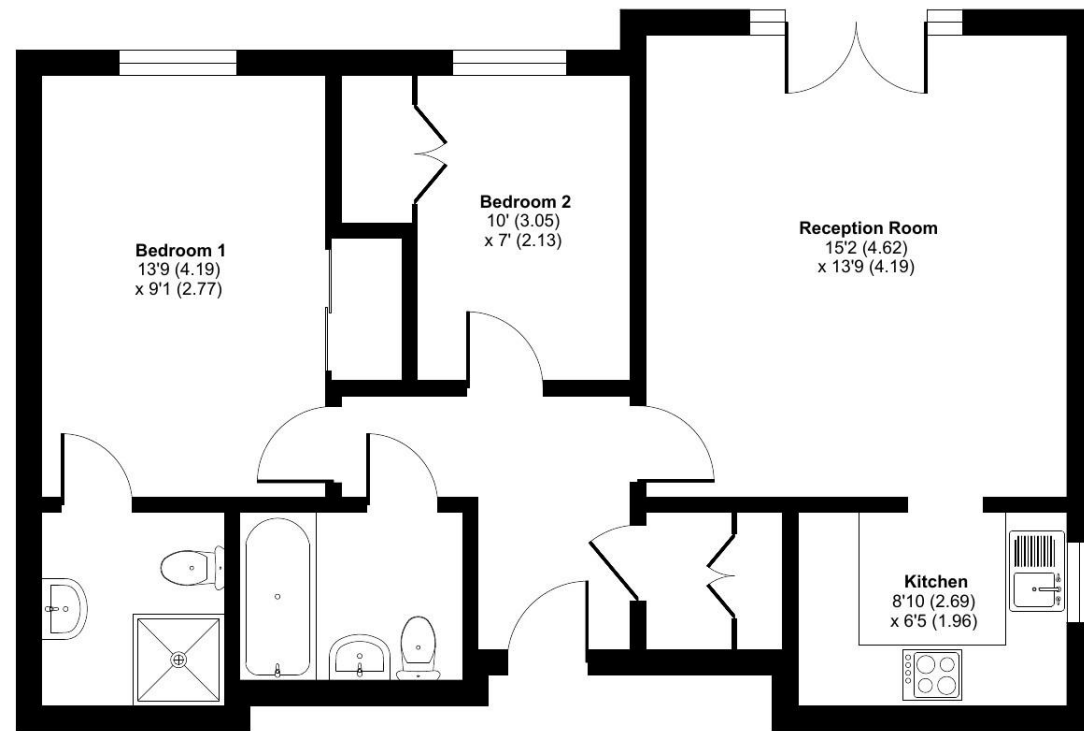


**Wildwood Court,  
Cedars Village, Marriot Terrace, Chorleywood,**

Approximate Area = 688 sq ft / 63.9 sq m  
For identification only - Not to scale



SECOND FLOOR



Floor plan produced in accordance with RICS Property Measurement Standards incorporating International Property Measurement Standards (IPMS2 Residential). © nichecom 2024. Produced for Retirement Villages. REF: 1177123

Talk to the team today to find out more:

01923 913 871  
CedarsVillageSales@retirementvillages.co.uk

Cedars Village  
Chorleywood  
Hertfordshire  
WD3 5GL



# Cedars Village

RETIREMENT  
VILLAGES

*A haven for walkers, golfers and  
wildlife enthusiasts*



## 31 Wildwood Court

*Newly Refurbished End of block  
two bedroom top floor  
apartment with Juliet Balcony  
and views across the village.*

**£2,950**  
Monthly inclusive charge



2 Bedrooms



2 Bathrooms



Apartment

Key features:

- Top Floor apartment
- 2 Bedrooms
- Juliet Balcony
- EPC Rating: C



Situated in the popular Wildwood Court is this top floor apartment. Front door opens to a hallway, utility cupboard housing a Hotpoint washer/dryer and worktop. From hallway; door leading to a spacious living room with double doors opening to a Juliet balcony. From the living room; a fully fitted kitchen with a window to side aspect, a range of units, Lamona integrated appliances; compact dishwasher, tall fridge freezer, electric hob and under counter oven. From hallway; a master bedroom with a built-in double wardrobe, an ensuite with a level access shower. From hallway; a second bedroom with built-in single cupboard, cupboard housing a Worcester Combi-boiler. Off hallway; a family bathroom with a bath. Wildwood Court has an internal corridor leading to the Mansion House. There is a wall mounted call monitor for emergency assistance and a personal alarm necklace to alert a first responder. All properties are pre-wired for Virgin Media. There is a wall mounted call monitor for emergency assistance and a personal alarm necklace to alert a first responder. Lift and stairs to all floors.

Cedars Village sits in an idyllic spot set opposite the common, away from the main road amidst 22 acres of landscaped gardens. Built around the exclusive Grade II listed mansion house with its Victorian conservatory it boasts an unrivalled ambience. Newly refurbished to a high standard, facilities include bistro-bar, library, convenience store and croquet/putting lawn. Opening soon are the restaurant, year-round conservatory, hair salon, health centre and activities room. Cedars Village provides comfort and security where community and lifestyle are of paramount importance.

## Cedars Village is a haven for walkers, golfers and wildlife enthusiasts.

*Packed full of amenities and features:*

- Set within 22 acres of gardens, meadows and orchards
- Grade II Listed mansion
- Conservatory
- A packed calendar of resident events
- Woodland walks and games lawn

Neighbouring towns include Watford, Hemel Hempstead and High Wycombe, perfect for trips out and bustling shopping centres. With such easy travel links into London, take advantage of the many theatres, museums, concerts, shops and restaurants the city has to offer. Or head out to the Chiltern Hills for miles and miles of hiking and cycling trails, pubs and farm shops.

