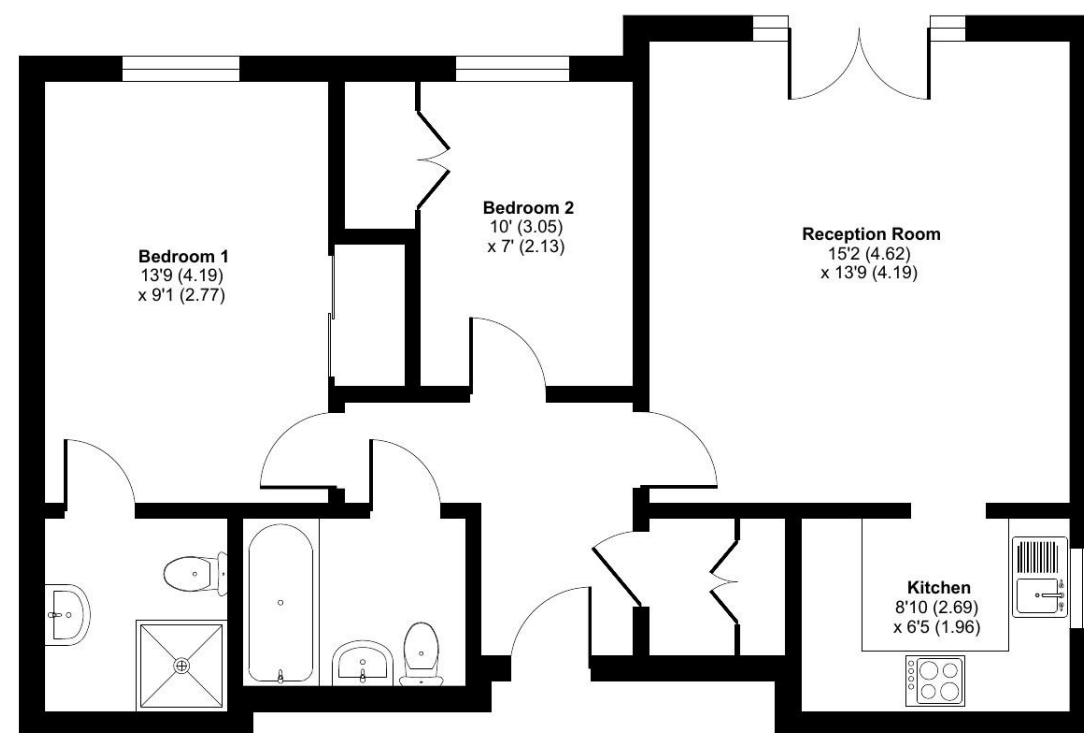


**Wildwood Court,
Cedars Village, Marriot Terrace, Chorleywood,**
Approximate Area = 688 sq ft / 63.9 sq m
For identification only - Not to scale



SECOND FLOOR



Floor plan produced in accordance with RICS Property Measurement Standards incorporating International Property Measurement Standards (IPMS2 Residential). © nichecom 2024. Produced for Retirement Villages. REF: 1177123

Talk to the team today to find out more:

01923 913 871
CedarsVillageSales@retirementvillages.co.uk

Cedars Village
Chorleywood
Hertfordshire
WD3 5GL



Setting Standards for
Retirement Communities

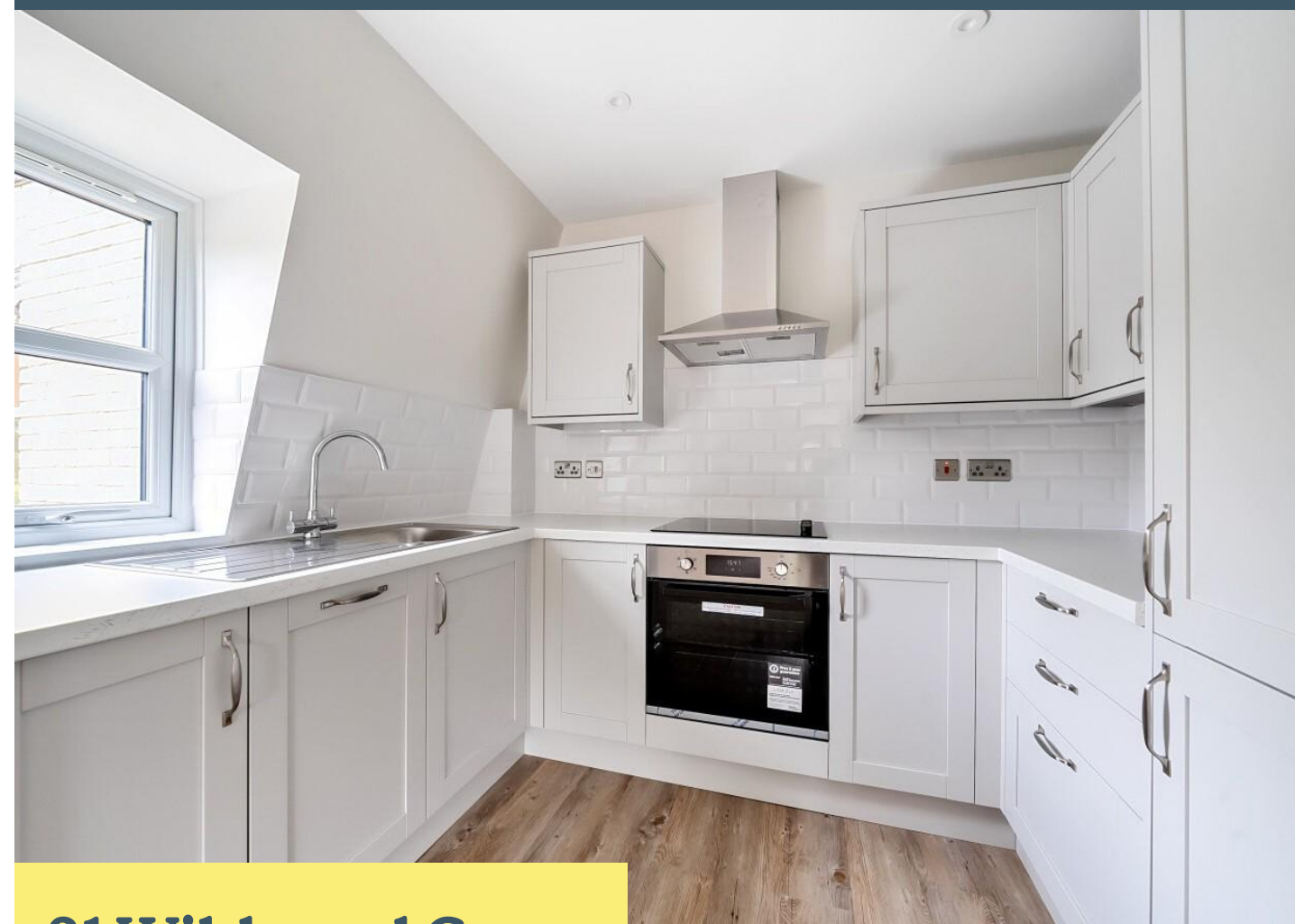


Integrated Retirement
Community

Cedars Village

RETIREMENT
VILLAGES

*A haven for walkers, golfers and
wildlife enthusiasts*



31 Wildwood Court

*Newly Refurbed End of block
two bedroom top floor
apartment with Juliet Balcony
and views across the village.*

£2,950
Monthly inclusive charge



2 Bedrooms



2 Bathrooms



Apartment

Key features:

- Top Floor apartment
- 2 Bedrooms
- Juliet Balcony
- EPC Rating: C



Situated in the popular Wildwood Court is this top floor end of block apartment. Living/dining Room with Juliet balcony, fitted kitchen with appliances and window to side aspect, large hallway storage cupboard, two bedrooms, bathroom and en-suite showerroom. All properties are pre-wired for Virgin Media. There is a wall mounted call monitor for emergency assistance and a personal alarm necklace to alert a first responder. Lift and stairs to all floors.

Cedars Village sits in an idyllic spot set opposite the common, away from the main road amidst 22 acres of landscaped gardens. Built around the exclusive Grade II listed mansion house with its Victorian conservatory it boasts an unrivalled ambience. Newly refurbished to a high standard, facilities include bistro-bar, library, convenience store and croquet/putting lawn. Opening soon are the restaurant, year-round conservatory, hair salon, health centre and activities room. Cedars Village provides comfort and security where community and lifestyle are of paramount importance.

Cedars Village is a haven for walkers, golfers and wildlife enthusiasts.

Packed full of amenities and features:

- Set within 22 acres of gardens, meadows and orchards
- Grade II Listed mansion
- Conservatory
- A packed calendar of resident events
- Woodland walks and games lawn

Neighbouring towns include Watford, Hemel Hempstead and High Wycombe, perfect for trips out and bustling shopping centres. With such easy travel links into London, take advantage of the many theatres, museums, concerts, shops and restaurants the city has to offer. Or head out to the Chiltern Hills for miles and miles of hiking and cycling trails, pubs and farm shops.

