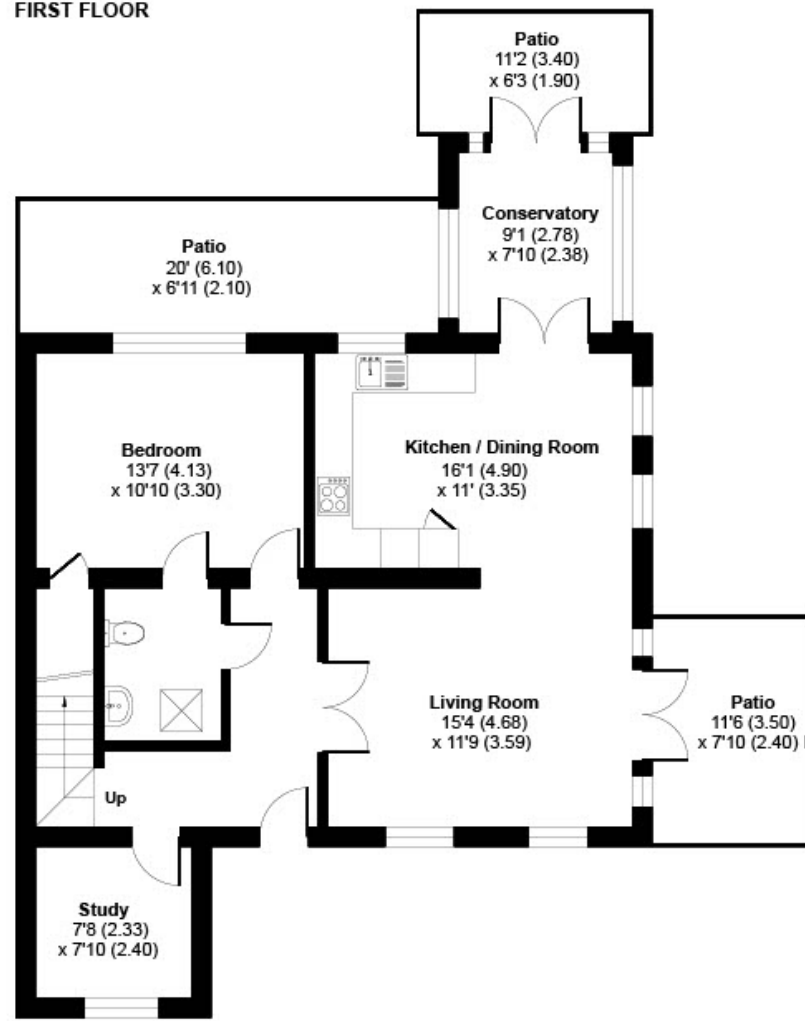


**Marriot Terrace, Cedars Village, Chorleywood,
Rickmansworth, WD3**

Approximate Area = 1289 sq ft / 119.7 sq m
Total = 1289 sq ft / 119.7 sq m



FIRST FLOOR



GROUND FLOOR

For identification only - Not to scale



Cedars Village

RETIREMENT
VILLAGES

Cedars Village is a haven for walkers, golfers and wildlife enthusiasts.

3 MARRIOT TERRACE



A rare opportunity to purchase one of only two eco-chalet bungalows at Cedars Village. This outstanding property offers spacious accommodation with a garden room opening to private patios and communal gardens.



Bungalow



2 Bedrooms



2 Bathrooms



Patio

Key features:

- Three reception areas
- Study/home office
- Two patios in grounds
- EPC Rating: C

Talk to the team today to find out more or to arrange a visit:

01923 913 871 | CedarsVillageSales@retirementvillages.co.uk



IRC | Integrated Retirement Community



£785,000

Leasehold*

Cedars Village is a haven for walkers, golfers and wildlife enthusiasts.

Neighbouring towns include Watford, Hemel Hempstead and High Wycombe, perfect for trips out and bustling shopping centres. With such easy travel links into London, take advantage of the many theatres, museums, concerts, shops and restaurants the city has to offer. Or head out to the Chiltern Hills for miles and miles of hiking and cycling trails, pubs and farm shops.

Amenities and features:

- Set within 22 acres of gardens, meadows and orchards
- Grade II Listed mansion
- Conservatory
- A packed calendar of resident events
- Woodland walks and games lawn



Built in 2011, this attractive semi-detached chalet bungalow offers a welcoming entrance hall leading to a bright dual-aspect sitting room with a dining area and underfloor heating. The contemporary kitchen features integrated appliances, including an AEG fridge freezer, Siemens hob, double oven and washer/dryer, Bosch dishwasher and Worcester boiler. A garden room opens onto a private patio and attractive communal gardens. The ground floor also comprises a double bedroom, Jack and Jill en-suite wet room and study. Upstairs, the master bedroom benefits from fitted storage and an en-suite bathroom. Solar panels provide hot water to the property. The property is further enhanced by its convenient location just a short walk from the Mansion House, the heart of Cedars Village, where a wide range of excellent communal facilities are available to residents. Services include a weekly hour housekeeping provision.

Cedars Village sits in an idyllic spot set opposite the common, away from the main road amidst 22 acres of landscaped gardens. Built around the exclusive Grade II listed mansion house with its Victorian conservatory it boasts an unrivalled ambience. Newly refurbished to a high standard, facilities include bistro-bar, library, convenience store and croquet/putting lawn. Restaurant, year-round conservatory, hair salon, health centre and activities room. Cedars Village provides comfort and security where community and lifestyle are of paramount importance.

