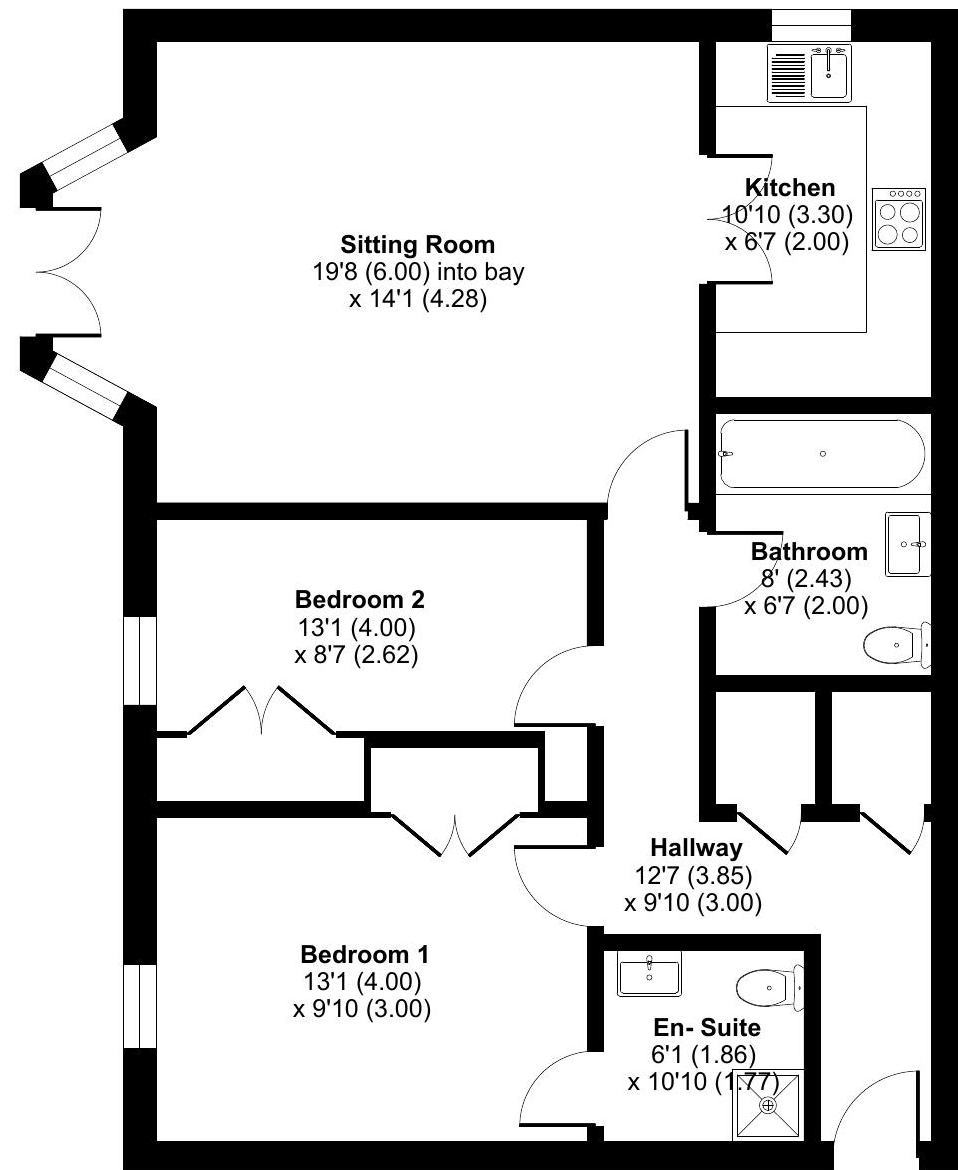


Lime Tree Village, Cawston, Rugby, CV22

Approximate Area = 810 sq ft / 75.2 sq m

For identification only - Not to scale



GROUND FLOOR

Talk to the team today to find out more or to arrange a visit:

01788 211 799 | LimeTreeVillageSales@retirementvillages.co.uk



IRC | Integrated Retirement Community



Lime Tree Village

RETIREMENT
VILLAGES

Lime Tree Village is a beautiful community where wellbeing, active lives and nature collide.

3 FRANKTON HOUSE



Rare and beautifully appointed ground floor two bedroom, two bathroom apartment in the centre of Lime Tree Village, with its own patio doors on to its own green space!



Apartment



2 Bedrooms



2 Bathrooms

Key features:

- Ground floor apartment with own patio access
- Close proximity to pedestrian walk to Bilton village
- 24Hr emergency response on site
- EPC Rating: C

£225,000

Leasehold*



Lime Tree Village is a beautiful community where wellbeing, active lives and nature collide.

Lime Tree Village is situated midway between Dunchurch and Bilton. With our own walkway into the very well serviced village of Bilton, you have easy access to shops, a Post Office, cafés, and great pubs. Rugby, Coventry, and Birmingham are within easy reach if you need to get your fix of shopping, fine dining and exploring.

Amenities and features:

- Edwardian Cawston House
- Stunning grounds and allotments
- Restaurant and small convenience store
- Residents' Bar and Sunroom
- Snooker room and wellbeing centre
- A packed calendar of daily events
- Pets are more than welcome!

Rare and beautifully appointed ground floor two bedroom, two bathroom apartment in the centre of Lime Tree Village, with it's own patio doors on to it's own green space!

Enter from the ground floor in Frankton House, off Wolston Court with a video entry system on the front door. Hallway leads to airing cupboard and storage cupboard on the way to the Principal bedroom offering built in double closet space and ensuite shower room. Next door you will find the second smaller bedroom again offering closet space. Across the hallway, a roomy bathroom with double shower room, perfect for guests. Following into the Lounge area with an open updated kitchen including integrated AEG Dishwasher, Electrolux Hood, and Washer/Dryer and Fridge Freezer, AEG Hob and Double oven, . The spacious lounge/dining room open into a bay where you can access the double patio doors, with a couple of steps down into the private green space; a much sought after feature of this ground floor apartment.

