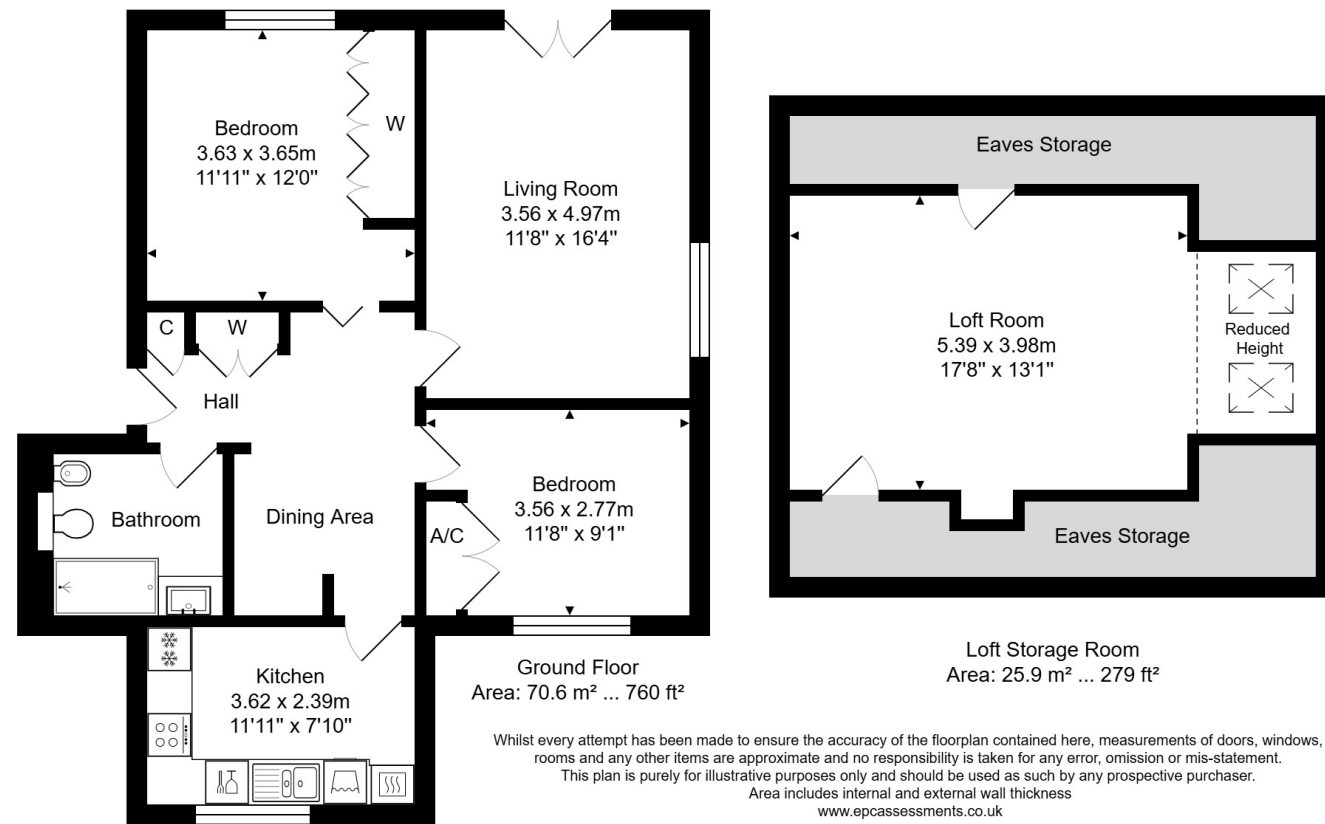


Avonpark Village

RETIREMENT
VILLAGES

*Breathtaking views right on your
doorstep*



3 Alexander Place

*First-floor retirement apartment
with stunning valley views, two
bedrooms, Juliet balcony and
spacious dual-aspect living room.*

£399,000

Other charges apply

Leasehold



2 Bedrooms



1 Bathrooms



Apartment

Key features:

- Juliet balcony with stunning views
- Fitted kitchen breakfast room
- Two bedrooms and bathroom
- EPC Rating: D

Talk to the team today to find out more:

01225 255 228

Avonparkvillagesales@retirementvillages.co.uk

Avonpark Village
Limpley Stoke, Near Bath
Wiltshire
BA2 7FF





Occupying an elevated position above the picturesque Limpley Stoke Valley, this first-floor retirement apartment enjoys exceptional views on three sides. Ideally situated near Winsley, between the historic towns of Bath and Bradford on Avon, the property offers spacious and thoughtfully arranged accommodation.

No. 3 Alexander Place features a welcoming central entrance hall with an adjoining dining area that connects to all principal rooms. The generously proportioned, dual-aspect sitting room is a standout feature, complete with a Juliet balcony and breathtaking, far-reaching views across the valley.

The well-appointed kitchen/breakfast room is located at the front of the property and overlooks open fields, providing a delightful setting for everyday living. There are two bedrooms—one currently used as a study/snug—both enjoying pleasant outlooks. The stylish bathroom includes a large walk-in shower cubicle.

Accessed via stairs with a fitted stair lift, the apartment forms part of a well-maintained development with ample parking for residents and visitors.

Avonpark Village is the perfect place to enjoy a full and active lifestyle.

Packed full of amenities and features:

- Set within acres of gardens with breathtaking views over the Avon Valley
- Residents' Clubhouse, bar and bistro
- On site hairdressers and nail salon, village shop and doctor's surgery
- Allotments
- A busy calendar of events and activities
- Pets are more than welcome!

Situated in Limpley Stoke in leafy Wiltshire, Avonpark Village is surrounded by beautiful rolling countryside yet only 5 miles from the centre of historic Bath. Longleat Estate, Stonehenge or Cheddar Gorge are all within easy reach of the community and perfect for those long hikes.

