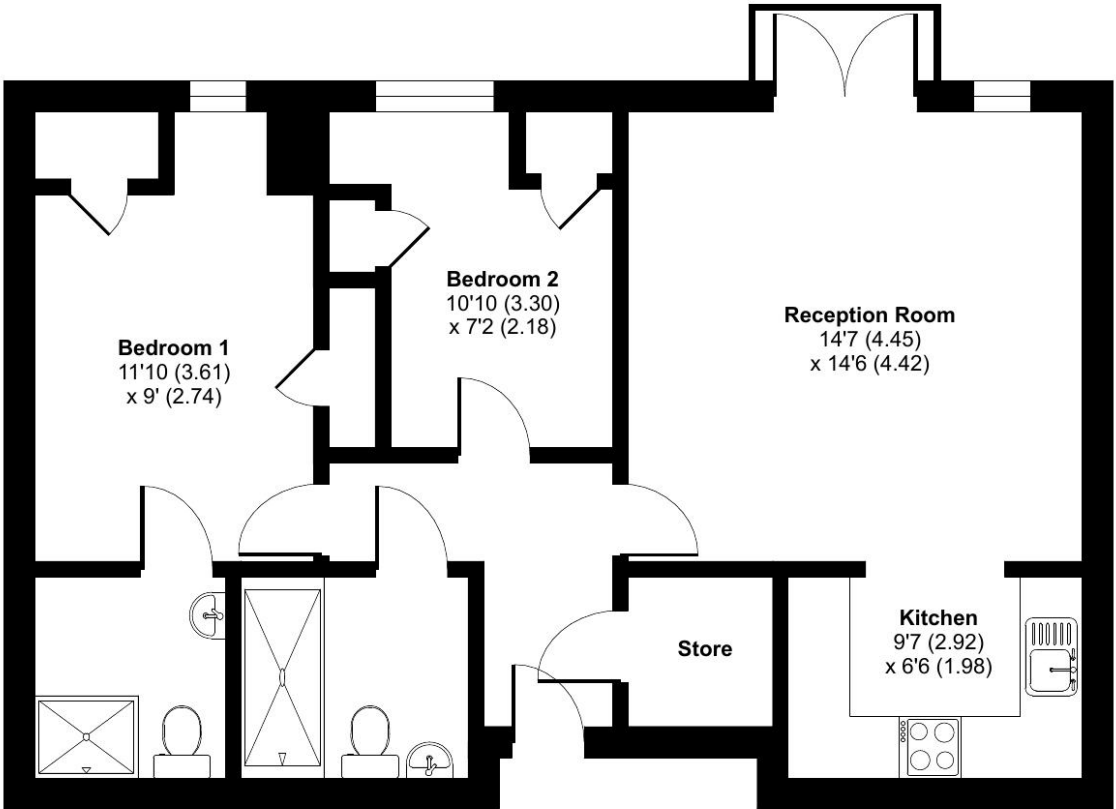
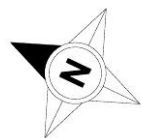


Ravens Court, Castle Village, Berkhamsted, HP4

Approximate Area = 710 sq ft / 66 sq m  
For identification only - Not to scale



SECOND FLOOR

Talk to the team today to find out more or to arrange a visit:

01923 913 864 | [CastleVillageSales@retirementvillages.co.uk](mailto:CastleVillageSales@retirementvillages.co.uk)



© IRC Integrated Retirement Community



# Castle Village

Castle Village is renowned for its vibrant and varied social life. A real community.

RETIREMENT  
VILLAGES

## 28 RAVENS COURT



A delightful two bedroom top floor apartment, with a westerly facing balcony, set within the prestigious Castle Village retirement development.



Apartment



2 Bedrooms



2 Bathrooms



Balcony

### Key features:

- Two Bedroom Top Floor Apartment
- En Suite to Master Bedroom
- Westerly Facing Balcony
- EPC Rating: C

£350,000

Leasehold\*





A delightful two bedroom top floor apartment, with a westerly facing balcony, set within the prestigious Castle Village retirement development.

Castle Village is exclusively for residents aged 55 and older, with admission subject to a village manager interview. The service charge includes extensive services including estate management, building maintenance, grounds care, insurance, communal area utilities, external maintenance, and window cleaning. It also covers one hour of weekly domestic cleaning which includes a weekly collection of all bed linen, which is cleaned ironed and returned to the property. Properties are equipped with emergency call systems, backed by 24/7 on-site health professionals, and a weekly on-site GP surgery for consultations and prescriptions, offering residents peace of mind and convenience.

# Castle Village is renowned for its vibrant and varied social life. A real community.

Castle Village is located on the outskirts of Berkhamsted, a popular and affluent commuter town with all the facilities you would expect of a thriving community. It's the perfect location from which to explore the wider area, with easy links to St Albans and London, as well as miles of countryside on your doorstep.

## *Amenities and features:*

- 28 acres of land on your doorstep
- A busy calendar of resident events
- Grade II Listed mansion at the heart of the community
- Sun terrace and games lawn
- Pets are more than welcome!

