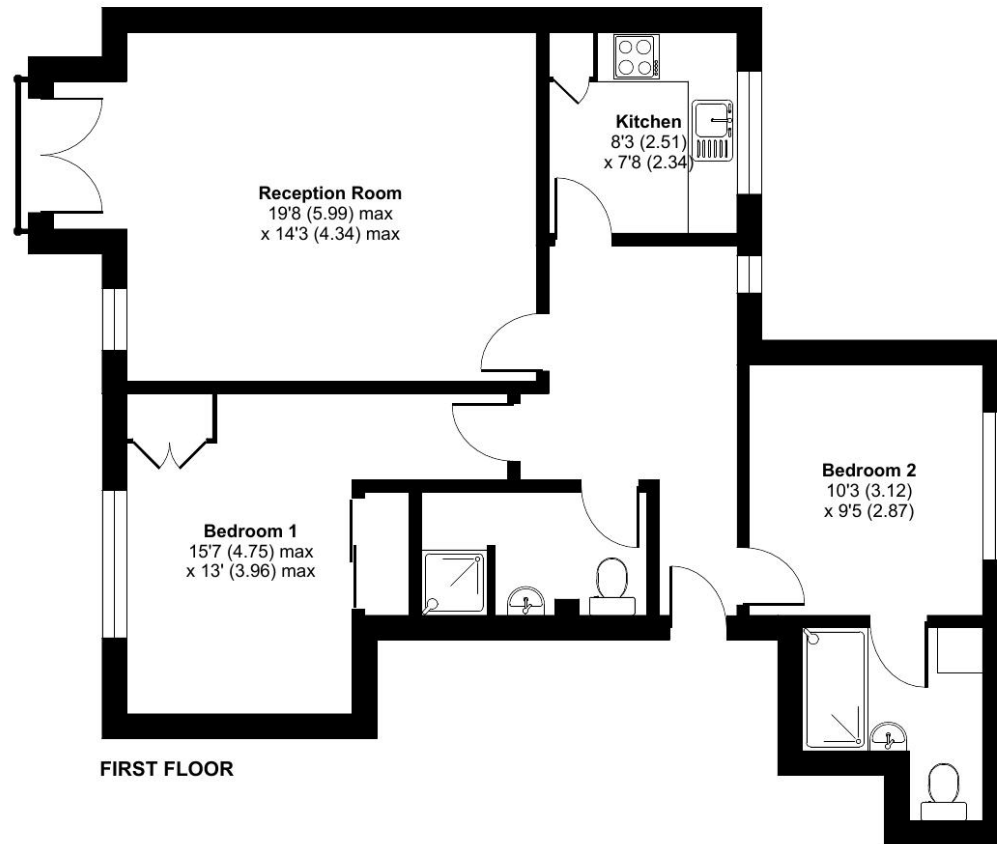


Deanery Walk, Avonpark, Limpley Stoke, Bath, BA2

Approximate Area = 793 sq ft / 73.7 sq m
For identification only - Not to scale



Floor plan produced in accordance with RICS Property Measurement 2nd Edition, incorporating International Property Measurement Standards (IPMS2 Residential). © nchecon 2026. Produced for RV Services Limited (Retirement Villages). REF: 1393491

Talk to the team today to find out more or to arrange a visit:

01225 255 228 | Avonparkvillagesales@retirementvillages.co.uk



IRC | Integrated Retirement Community



Avonpark Village

Breathtaking views right on your doorstep

RETIREMENT VILLAGES

28 Deanery Walk



A beautifully presented two-bedroom first-floor apartment with lift access, boasting stunning valley views, generous living space, a Juliet balcony and two bathrooms including an en-suite.



Apartment



2 Bedrooms



2 Bathrooms

Key features:

- Two bedroom
- Two bathrooms including an en-suite
- Juliet balcony with stunning views
- EPC Rating: C

£430,000

Leasehold



Avonpark Village is the perfect place to enjoy a full and active lifestyle.

Situated in Limpley Stoke in leafy Wiltshire, Avonpark Village is surrounded by beautiful rolling countryside yet only 5 miles from the centre of historic Bath. Longleat Estate, Stonehenge or Cheddar Gorge are all within easy reach of the community and perfect for those long hikes.

Amenities and features:

- Breath taking views over the Avon Valley
- Residents' Clubhouse, bar and bistro
- On site hairdressers and nail salon, village shop and doctor's surgery
- Allotments
- Calendar of events and activities
- Pets are more than welcome!

A beautifully presented two-bedroom first-floor apartment with lift access, boasting stunning valley views, generous living space, a Juliet balcony, and two easily accessible bathrooms, including an en-suite. The kitchen is very well equipped with a range of integrated appliances, including an electric hob, oven, integrated fridge freezer, and dishwasher.

Avonpark Village offers a superb range of social and leisure facilities, along with support services tailored to your individual needs—both now and in the future. Avonpark is a highly sought-after retirement village set within approximately 15 acres of mature, secluded grounds, enjoying delightful rural views over the Avon Valley and beyond. The extensive communal gardens feature an array of mature trees, shrubs, plants, and seating areas for residents. These are complemented by a restaurant, bar, bistro, and coffee lounge, as well as a full calendar of resident-led activities and trips.

