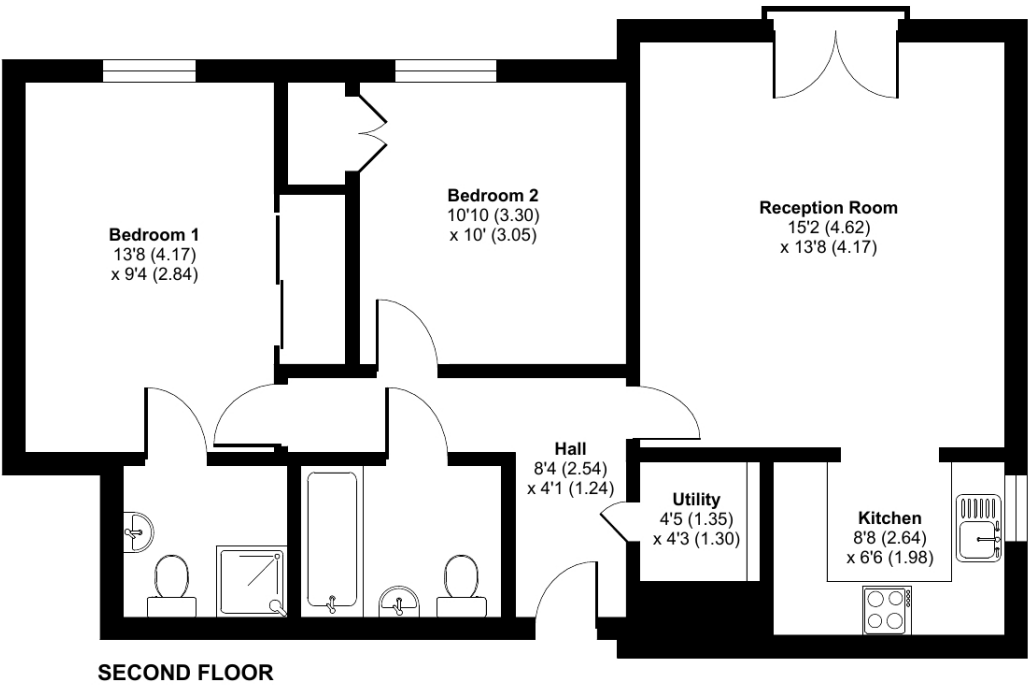


Cedars Village, Marriot Terrace, WD3

Approximate Area = 741 sq ft / 68.8 sq m
For identification only - Not to scale



Floor plan produced in accordance with RICS Property Measurement 2nd Edition, Incorporating International Property Measurement Standards (IPMS2 Residential). © n/checom 2024. Produced for Retirement Villages. REF: 1206894

Talk to the team today to find out more:

01923 913 871
CedarsVillageSales@retirementvillages.co.uk

Cedars Village
Chorleywood
Hertfordshire
WD3 5GL



Cedars Village

RETIREMENT
VILLAGES

*A haven for walkers, golfers and
wildlife enthusiasts*



27 Wildwood Court

****COMING SOON TO RENT****

£2,950
Monthly inclusive charge



2 Bedrooms



2 Bathrooms



Apartment

Key features:

- Newly Refurbished apartment
- Top Floor apartment
- Located in the main block
- EPC Rating: C



Cedars Village sits in an idyllic spot set opposite the common, away from the main road amidst 22 acres of landscaped gardens. Built around the exclusive Grade II listed mansion house with its Victorian conservatory it boasts an unrivalled ambience. Newly refurbished to a high standard, facilities include bistro-bar, library, convenience store and croquet/putting lawn. Opening soon are the restaurant, year-round conservatory, hair salon, health centre and activities room . Cedars Village provides comfort and security where community and lifestyle are of paramount importance.

Cedars Village is a haven for walkers, golfers and wildlife enthusiasts.

Packed full of amenities and features:

- **Set within 22 acres of gardens, meadows and orchards**
- **Grade II Listed mansion**
- **Conservatory**
- **A packed calendar of resident events**
- **Woodland walks and games lawn**

Neighbouring towns include Watford, Hemel Hempstead and High Wycombe, perfect for trips out and bustling shopping centres. With such easy travel links into London, take advantage of the many theatres, museums, concerts, shops and restaurants the city has to offer. Or head out to the Chiltern Hills for miles and miles of hiking and cycling trails, pubs and farm shops.

