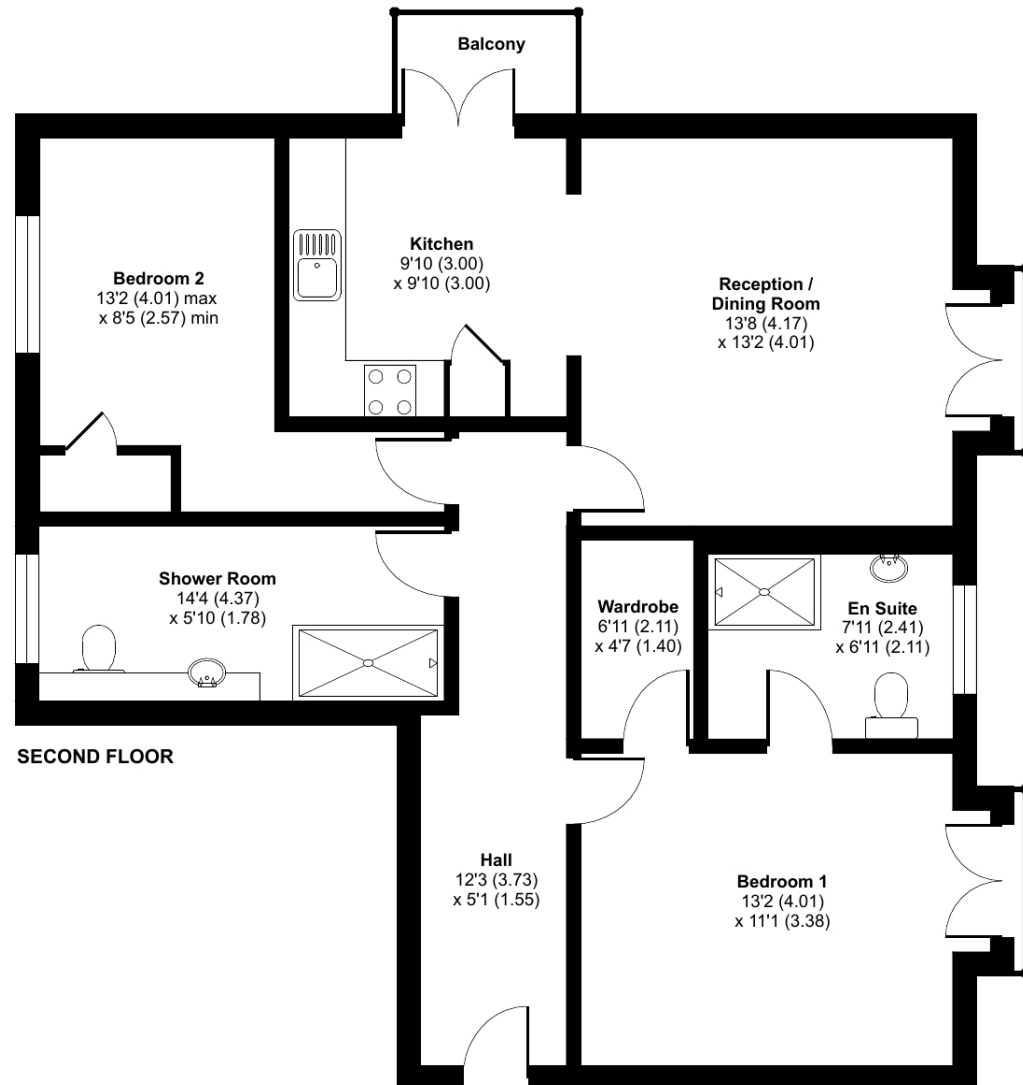


# Kingfisher Court, Avonpark, Limpley Stoke, Bath, BA2

Approximate Area = 892 sq ft / 82.9 sq m

For identification only - Not to scale



Floor plan produced in accordance with RICS Property Measurement 2nd Edition, Incorporating International Property Measurement Standards (IPMS2 Residential). © ncheom 2025. Produced for Retirement Security Limited. REF: 1318896

**Talk to the team today to find out more:**

01225 255 228

[Avonparkvillagesales@retirementvillages.co.uk](mailto:Avonparkvillagesales@retirementvillages.co.uk)

Avonpark Village  
Limpley Stoke, Near Bath  
Wiltshire  
BA2 7FF



# Avonpark Village

RETIREMENT VILLAGES

*Breathtaking views right on your doorstep*



## 25 Kingfisher Court

*Newly refurbished 2-bedroom apartment in the highly sought-after Independent Living Retirement Village of Avonpark, with lift access and ample parking.*

**£3,550**

Monthly inclusive charge



2 Bedrooms



2 Bathrooms



Apartment

*Key features:*

- **Lift Access**
- **Balcony**
- **Fully Refurbished**
- **EPC Rating: C**



Newly refurbished 2-bedroom apartment in the highly sought-after Independent Living Retirement Village of Avonpark.

This 2-bedroom apartment has been completely refurbished and includes a brand-new kitchen with an electric hob, oven, fridge freezer, dishwasher, and washing machine.

The light and airy lounge/diner is complemented by a lovely balcony—ideal for enjoying breakfast in the sun.

The large master bedroom features a generously sized walk-in wardrobe and a stunning brand-new en suite shower room. The second double bedroom is perfect for guests or can be used as a hobby room or study.

Avonpark Village offers a superb range of social and leisure facilities, along with support services tailored to your individual needs—both now and in the future. Avonpark is a highly sought-after retirement village set in approximately 15 acres of mature, secluded grounds with delightful rural views over the Avon Valley and beyond. The extensive communal gardens feature an array of mature trees, shrubs, plants, and seating areas for residents. These are complemented by a restaurant, bar, bistro, and coffee lounge, as well as a full calendar of resident-led activities and trips.

## Avonpark Village is the perfect place to enjoy a full and active lifestyle.

*Packed full of amenities and features:*

- Set within acres of gardens with breathtaking views over the Avon Valley
- Residents' Clubhouse, bar and bistro
- On site hairdressers and nail salon, village shop and doctor's surgery
- Allotments
- A busy calendar of events and activities
- Pets are more than welcome!

Situated in Limpley Stoke in leafy Wiltshire, Avonpark Village is surrounded by beautiful rolling countryside yet only 5 miles from the centre of historic Bath. Longleat Estate, Stonehenge or Cheddar Gorge are all within easy reach of the community and perfect for those long hikes.

