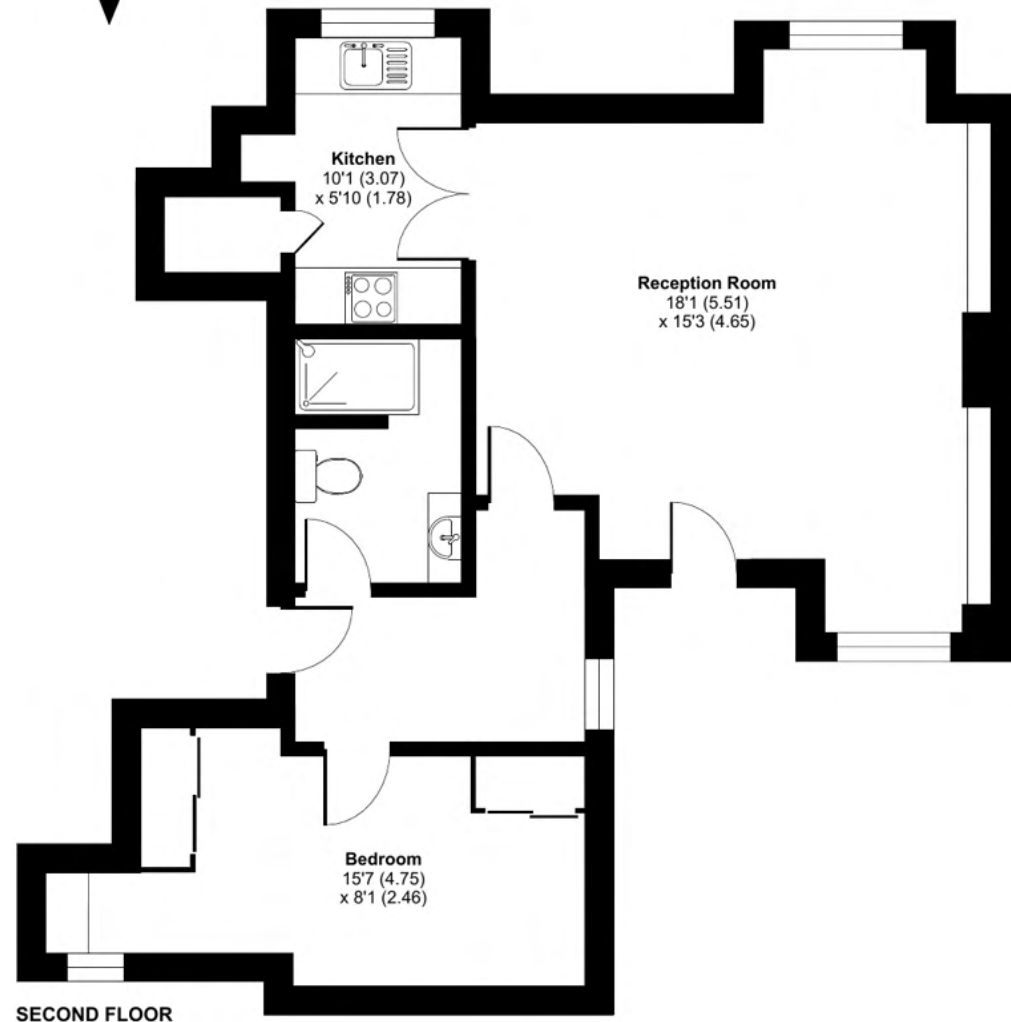



Deanery Walk, Avonpark, Limpley Stoke, Bath, BA2

Approximate Area = 643 sq ft / 59.7 sq m

For identification only - Not to scale



 Floor plan produced in accordance with RICS Property Measurement 2nd Edition, Incorporating International Property Measurement Standards (IPMS2 Residential). © nche.com 2025. Produced for Retirement Security Limited. REF: 1281954

Talk to the team today to find out more:

01225 255 228

Avonparkvillagesales@retirementvillages.co.uk

Avonpark Village
Limpley Stoke, Near Bath
Wiltshire
BA2 7FF



Avonpark Village

RETIREMENT
VILLAGES

*Breathtaking views right on your
doorstep*



24 Deanery Walk

*A one bedroom apartment on the
second floor of Deanery Walk with
lift access and spectacular views.*

£220,000

Other charges apply

Leasehold



1 Bedrooms



1 Bathrooms



Apartment

Key features:

- **Dual Aspect Sitting/Dining Room**
- **Kitchen with Far Reaching Views**
- **Second Floor**
- **EPC Rating: D**



Lift access to this charming one bedroom apartment, which is located on the top floor and enjoys views overlooking the stunning Avon Valley. The property offers a well-appointed spacious dual aspect sitting/dining room, bedroom and shower room. The kitchen is very well equipped with a range of integrated appliances, having amazing South facing views over the Village Grounds and Avon Valley.

Avonpark is a highly sought after retirement village set in approximately 15 acres of mature secluded grounds with delightful rural views over an area of outstanding natural beauty. The extensive communal gardens have an array of mature trees, shrubs, plants and seated areas for the residents.

Avonpark Village offers a superb range of social and leisure facilities, together with support services that are tailored to your precise requirements for your present and future needs.

Tenure: Leasehold

Avonpark Village is the perfect place to enjoy a full and active lifestyle.

Packed full of amenities and features:

- Set within acres of gardens with breathtaking views over the Avon Valley
- Residents' Clubhouse, bar and bistro
- On site hairdressers and nail salon, village shop and doctor's surgery
- Allotments
- A busy calendar of events and activities
- Pets are more than welcome!

Situated in Limpley Stoke in leafy Wiltshire, Avonpark Village is surrounded by beautiful rolling countryside yet only 5 miles from the centre of historic Bath. Longleat Estate, Stonehenge or Cheddar Gorge are all within easy reach of the community and perfect for those long hikes.

