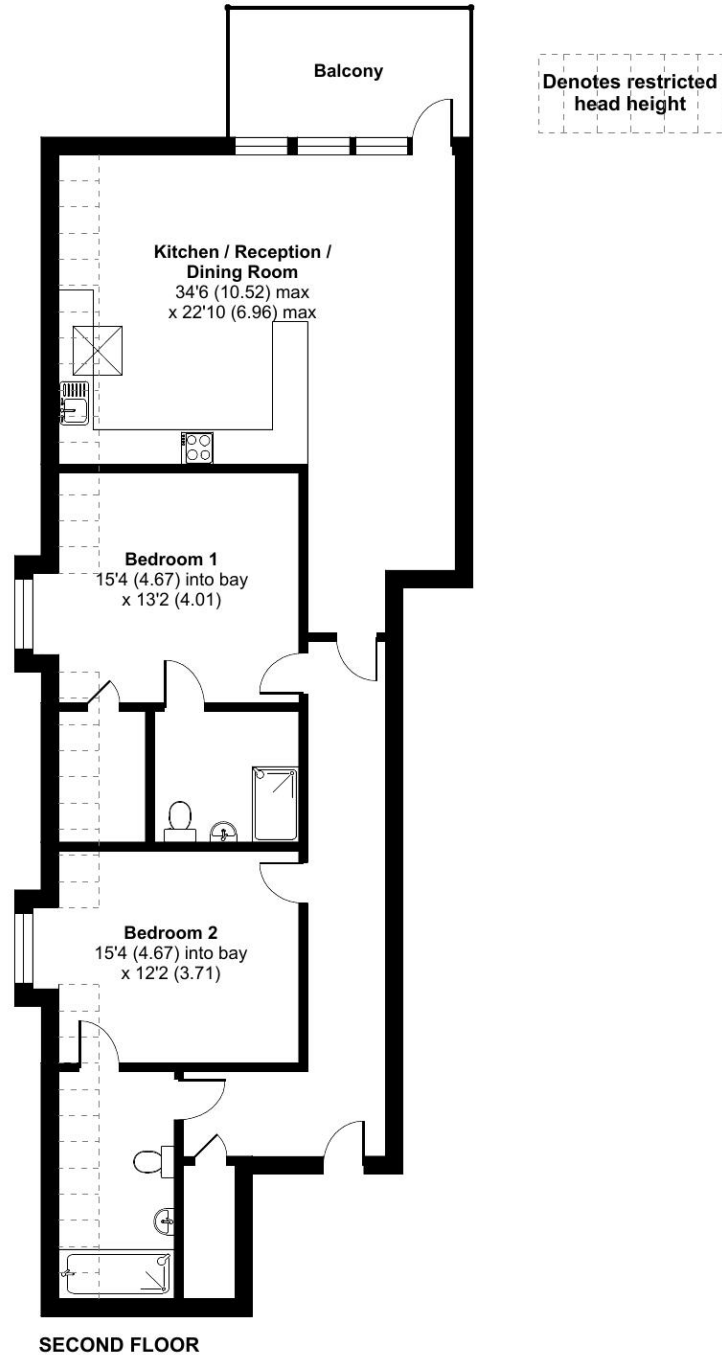


Chase House, Gradwell Park, South Chailey, Lewes, BN8



Approximate Area = 1143 sq ft / 106.1 sq m
 Limited Use Area(s) = 73 sq ft / 6.8 sq m
 Total = 1216 sq ft / 112.9 sq m
 For identification only - Not to scale



Talk to the team today to find out more or to arrange a visit:

01273 916499 | Gradwellparksales@retirementvillages.co.uk



IRC | Integrated Retirement Community



Gradwell Park

RETIREMENT VILLAGES

Gradwell Park is more than a place to live. It's a thriving community.

24 CHASE HOUSE



Excellent two - bedroom 2nd floor penthouse apartment with large private balcony. Also benefiting from being close access to village facilities situated in Chase House.



Apartment



2 Bedrooms



2 Bathrooms



Private Terrace

Key features:

- Penthouse apartment
- Private Balcony/Terrace
- Excellent storage
- EPC Rating: B

£650,000

Leasehold*



Gradwell Park is more than a place to live. It's a thriving community.

Situated within South Chailey, Gradwell Park is a stone's throw from the charming market town of Lewes, with easy access to the rest of East Sussex. Venturing out by train, Uckfield, Lewes and Haywards Heath offer regular services straight into London and Brighton is just 20 minutes away. You can also be at Gatwick Airport in around 30 minutes so you can be soaking up the winter sun in no time!

Amenities and features:

- Convenient village shop
- Resident allotments
- Biodiverse nature trail
- Wellness suite & hair salon
- Contemporary clubhouse
- Bistro

This two-bedroom penthouse apartment featuring spacious open plan kitchen/lounge boasts a large private balcony/terrace area. Further comprising of a generous master bedroom with superb en-suite shower room and large second bedroom with access to main bathroom. Excellent storage throughout including a box room and walk in wardrobe. A large kitchen area is complimented with Integrated appliances included: AEG Dishwasher/Dryer, fridge freezer, Zanussi oven and NEFF hob.

Gradwell Park provides diverse apartments and cottages with various sizes and views, including the beautiful South Downs, a welcoming games lawn, and the scenic bordering forest.

we offer a rich array of amenities, including a dedicated wellness team, engaging arts and crafts, a nature trail, community gardening, and a fantastic clubhouse with South Downs views and a vibrant social calendar. It's not just a place to live; it's a place to belong and thrive.

Our inclusive community extends a warm welcome to your extended family, friends (including pets), and we even offer a guest suite to accommodate them. This is your home, your community, and we're here to ensure that you and your loved ones make the most of this wonderful environment.

