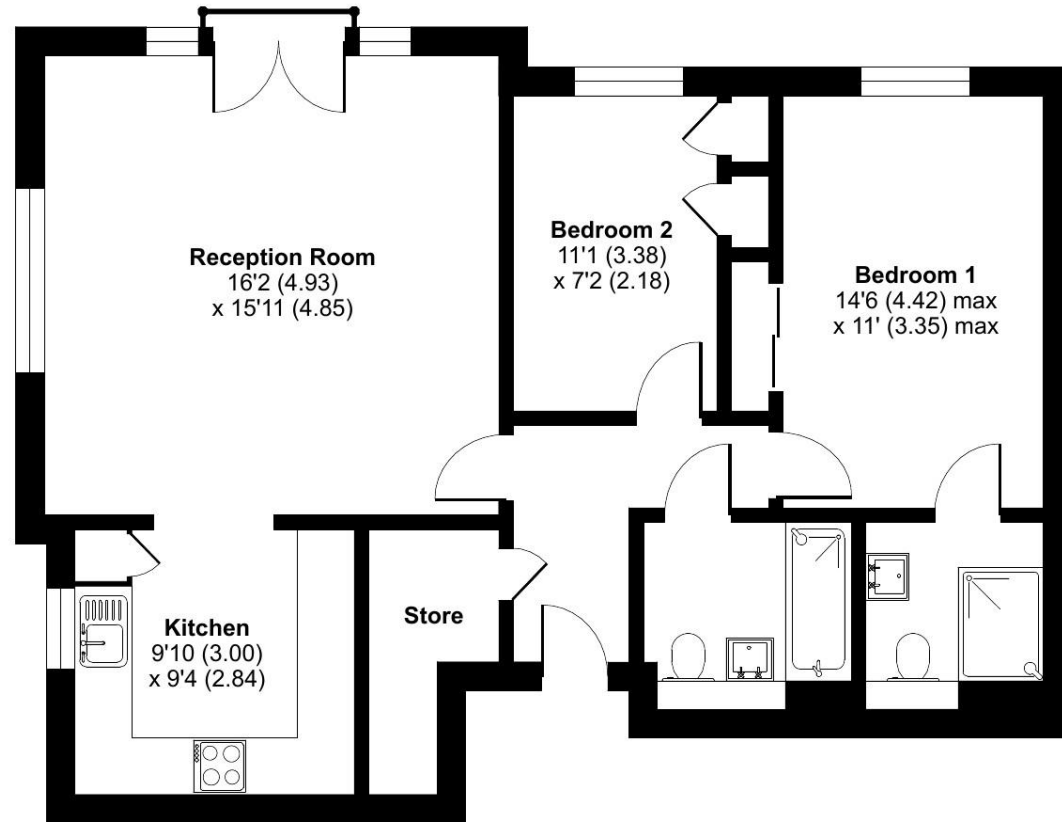


Badgers Walk, Rickmansworth, WD3

Approximate Area = 796 sq ft / 74 sq m

For identification only - Not to scale



FIRST FLOOR

Floor plan produced in accordance with RICS Property Measurement 2nd Edition, Incorporating International Property Measurement Standards (IPMS2 Residential). © nrichcom 2025. Produced for Retirement Security Limited. REF: 1256571

Talk to the team today to find out more:

01923 913 871
CedarsVillageSales@retirementvillages.co.uk

Cedars Village
Chorleywood
Hertfordshire
WD3 5GL



Cedars Village

RETIREMENT
VILLAGES

*A haven for walkers, golfers
and wildlife enthusiasts*



22 Homewood Court

Spacious two bedroom first floor apartment. Situated in Homewood Court in a pleasant end of block location.

£325,000

Other charges apply

Leasehold



2 Bedrooms



2 Bathrooms



Apartment

Key features:

- **First floor apartment**
- **Dual aspect living room**
- **Bathroom and en-suite**
- **EPC Rating: C**



This first floor apartment is bright and spacious with a larger than average kitchen. Welcoming entrance hallway, large storage cupboard, dual aspect spacious and bright living room with double doors leading to a Juliet balcony, open-plan fitted kitchen with a window to side aspect. An original pine wood kitchen in good condition with a range of fitted units, freestanding white Bosch washing machine, integrated Zanussi fridge/freezer, freestanding white Bosch compact dishwasher, Electric Bosch hob, under counter white Tricity Bendix oven. Master bedroom with double built-in wardrobe with sliding doors, en-suite shower room, second bedroom with a built-in cupboard and a cupboard housing a Worcester Combi-Boiler, a family bathroom with bath. All properties are pre-wired for Virgin Media. There is a wall mounted call monitor for emergency assistance and a personal alarm necklace to alert a first responder. Lift and stairs to all floors.

Cedars Village sits in an idyllic spot set opposite the common, away from the main road amidst 22 acres of landscaped gardens. Built around the exclusive Grade II listed mansion house with its Victorian conservatory it boasts an unrivalled ambience. Newly refurbished to a high standard, facilities include bistro-bar, restaurant, library, convenience store and croquet/putting lawn. Opening soon are the year-round conservatory, hair salon, health centre and activities room. Cedars Village provides comfort and security where community and lifestyle are of paramount importance.

Cedars Village is a haven for walkers, golfers and wildlife enthusiasts.

Packed full of amenities and features:

- Set within 22 acres of gardens, meadows and orchards
- Grade II Listed mansion
- Conservatory
- A packed calendar of resident events
- Woodland walks and games lawn

Neighbouring towns include Watford, Hemel Hempstead and High Wycombe, perfect for trips out and bustling shopping centres. With such easy travel links into London, take advantage of the many theatres, museums, concerts, shops and restaurants the city has to offer. Or head out to the Chiltern Hills for miles and miles of hiking and cycling trails, pubs and farm shops.

