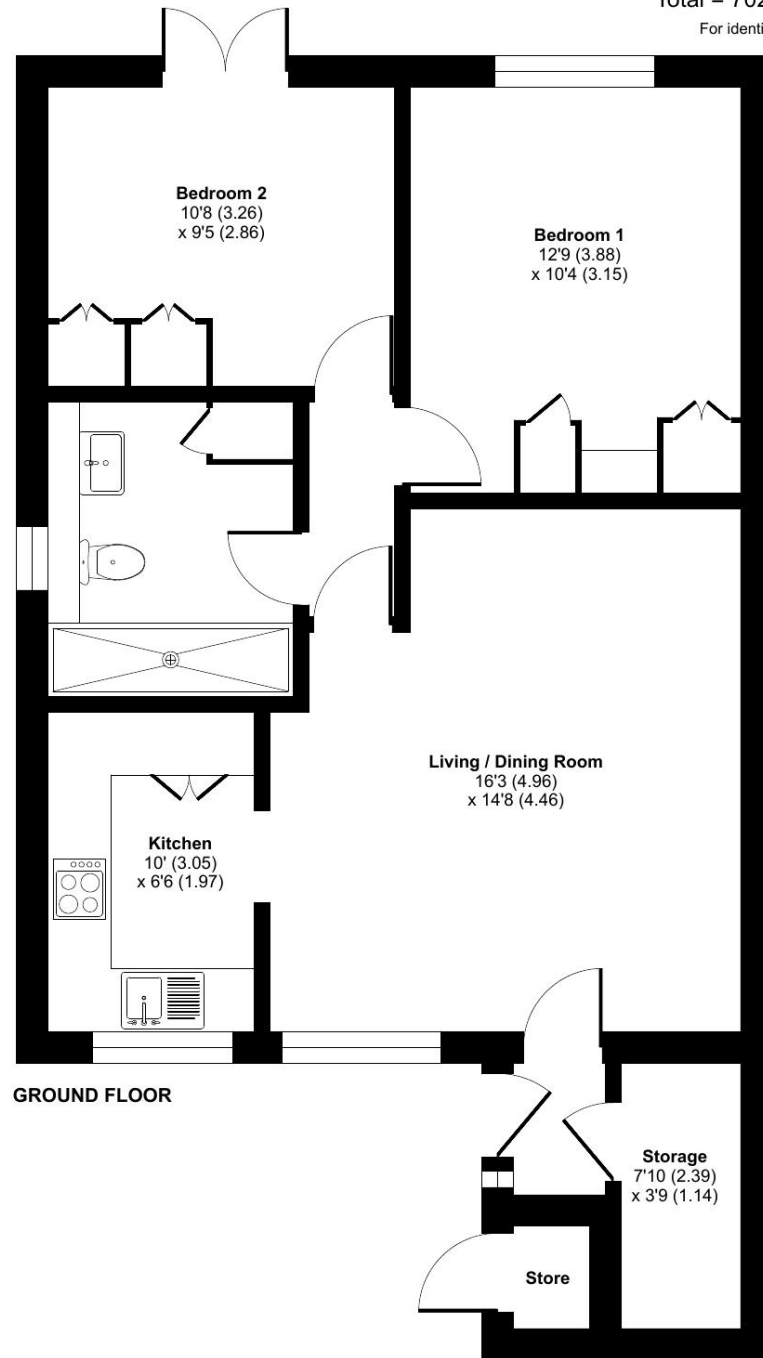




Day Court, Elmbridge Village, Cranleigh, GU6

Approximate Area = 694 sq ft / 64.4 sq m
Store = 8 sq ft / 0.7 sq m
Total = 702 sq ft / 65.1 sq m
For identification only - Not to scale



GROUND FLOOR

Talk to the team today to find out more or to arrange a visit:

01483 672 629 | ElmbridgeVillageSales@retirementvillages.co.uk



IRC | Integrated Retirement Community



Elmbridge Village

Elmbridge Village is a thriving community where you can join in everything, or simply relax.

RETIREMENT VILLAGES

20 Day Court



20 Day Court is a beautifully modernised ground floor apartment situated in the heart of Elmbridge Village.



Apartment



2 Bedrooms



1 Bathrooms

Key features:

- Newly modernised
- Close to all the amenities
- Secluded patio
- EPC Rating: C

£3,500

Monthly inclusive Charge



Elmbridge Village is a thriving community where you can join in everything, or simply relax.

Elmbridge is just outside Cranleigh, eight miles southeast of Guilford. It has a vibrant high street made up of independent shops, cafes, restaurants and typical amenities such as supermarkets, leisure and health centres. From festivals and arts to the Cranleigh Bowls Club and the Cranleigh Cricket Academy, there is plenty going on year round.

Amenities and features:

- Nature walk and allotments
- On site restaurant, bar and lounge
- A village shop
- Wellness centre
- Hair salon
- A packed calendar of events

This well-presented home offers comfortable, contemporary living with easy access to all the village amenities. With its convenient ground floor position and proximity to everything Elmbridge Village has to offer, 20 Day Court is ideal for those seeking an easy, low-maintenance lifestyle within a vibrant retirement community.

The accommodation comprises a spacious living/dining room with an opening through to the fully fitted kitchen, which includes an integrated Lamona fridge-freezer, dishwasher, Hotpoint washer dryer, NEFF eye-level oven and electric hob. The main bedroom benefits from fitted wardrobes, while the second bedroom features French doors leading directly to the garden. There is also a shower room with level-access walk-in shower, WC and wash hand basin, along with a useful utility cupboard housing the washer-dryer.

Elmbridge is a well-established village with 276 homes, including bungalows and apartments, set within in 27 acres of landscaped grounds. Located near the charming Cranleigh village, Elmbridge offers residents a range of amenities such as a restaurant, a lively bar, village hall, hair salon, croquet lawn, on-site store, library, and regular doctor's surgeries. Those with green fingers can enjoy our lively allotments, and there's a beautiful walking meadow and daily bus service for a well-rounded lifestyle.

