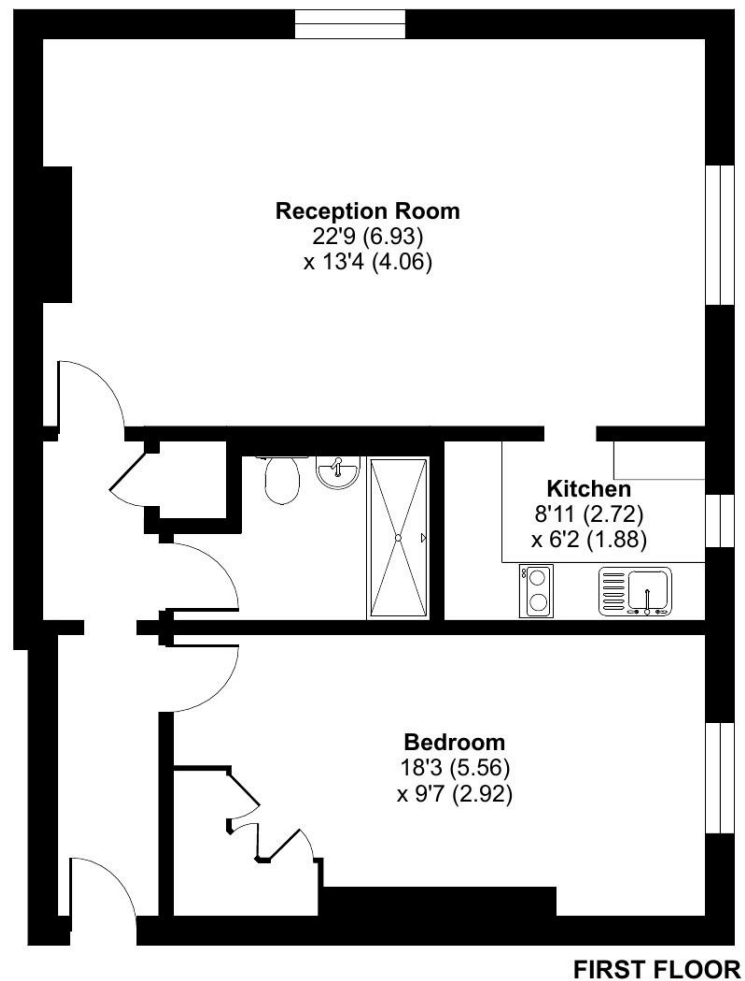


Cedars Village, Finch Green, Chorleywood, WD3

Approximate Area = 683 sq ft / 63.5 sq m

For identification only - Not to scale



Floor plan produced in accordance with RICS Property Measurement 2nd Edition, Incorporating International Property Measurement Standards (IPMS2 Residential). © ncheom 2024. Produced for Retirement Villages. REF: 1225001

Talk to the team today to find out more:

01923 913 871
CedarsVillageSales@retirementvillages.co.uk

Cedars Village
Chorleywood
Hertfordshire
WD3 5GL



Cedars Village

RETIREMENT
VILLAGES

A haven for walkers, golfers and wildlife enthusiasts



2 The Cedars

A rare opportunity to purchase this stunning period property located within the refinement of the magnificent French Renaissance style Mansion House. This apartment occupies an unrivalled position with extensive bird's-eye views over the grounds.

£310,000

Other charges apply

Leasehold



1 Bedrooms



1 Bathrooms



Apartment

Key features:

- First floor apartment
- One double bedroom
- Character features
- EPC Rating: D



The hallway leads to an impressive and bright drawing room with high ceilings, fireplace and dual-aspect feature windows, electric blinds fitted to all windows. A modern fitted kitchen with built-in Neff appliances including; oven and microwave at eye level. Integrated Lamona appliances including; a compact dishwasher, two ring electric hob and a fridge/freezer. The kitchen mixer sink incorporates a boiling water tap. An impressive double bedroom with built-in triple wardrobes and a fireplace. A modern shower room. With tall windows throughout, the apartment is bright and spacious, with an unrivalled position with extensive bird's-eye views over the grounds. There is a wall mounted call monitor for emergency assistance and a personal alarm necklace to alert a first responder.

Cedars Village sits in an idyllic spot set opposite the common, away from the main road amidst 22 acres of landscaped gardens. Built around the exclusive Grade II listed mansion house with its Victorian conservatory it boasts an unrivalled ambience. Newly refurbished to a high standard, facilities include bistro-bar, restaurant, library, convenience store and croquet/putting lawn. Opening soon are the year-round conservatory, hair salon and health centre. Cedars Village provides comfort and security where community and lifestyle are of paramount importance.

****Await Probate****

Cedars Village is a haven for walkers, golfers and wildlife enthusiasts.

Packed full of amenities and features:

- Set within 22 acres of gardens, meadows and orchards
- Grade II Listed mansion
- Conservatory
- A packed calendar of resident events
- Woodland walks and games lawn

Neighbouring towns include Watford, Hemel Hempstead and High Wycombe, perfect for trips out and bustling shopping centres. With such easy travel links into London, take advantage of the many theatres, museums, concerts, shops and restaurants the city has to offer. Or head out to the Chiltern Hills for miles and miles of hiking and cycling trails, pubs and farm shops.

