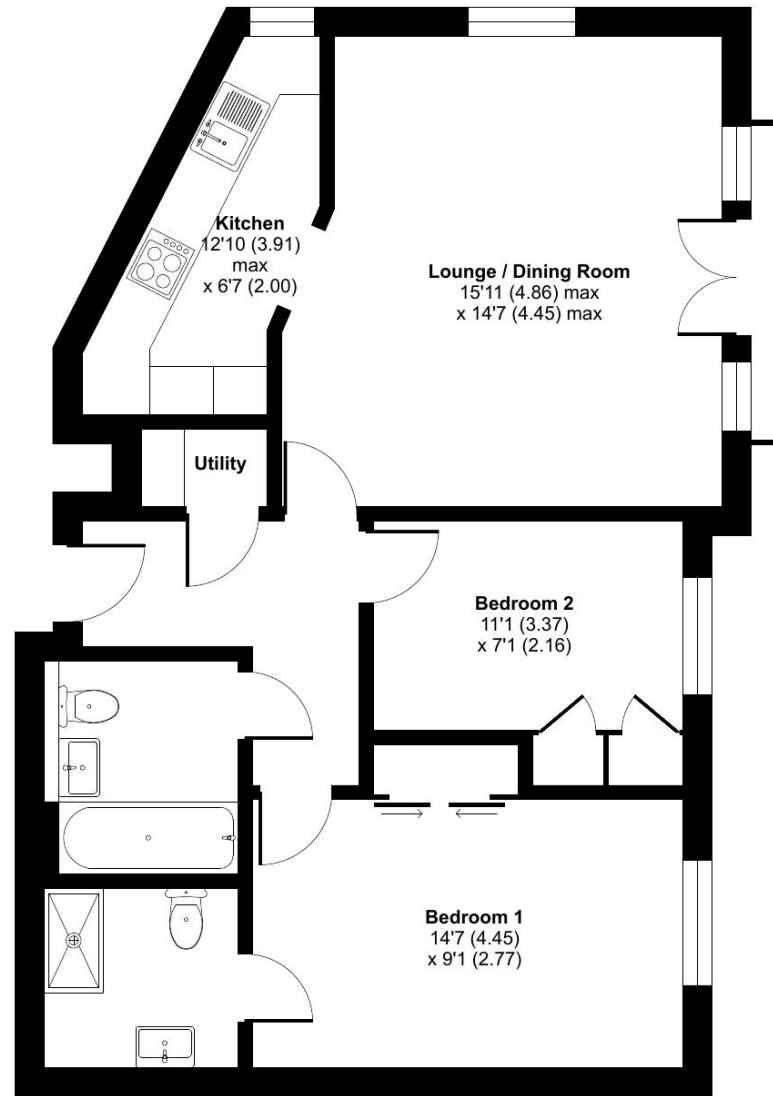


Cedars Village, Chorleywood, Rickmansworth, WD3

Approximate Area = 714 sq ft / 66.3 sq m
For identification only - Not to scale



FIRST FLOOR

Floor plan produced in accordance with RICS Property Measurement 2nd Edition, Incorporating International Property Measurement Standards (IPMS2 Residential). © nrichcom 2025. Produced for Retirement Security Limited. REF: 1377010

Talk to the team today to find out more or to arrange a visit:

01923 913 871 | CedarsVillageSales@retirementvillages.co.uk



IRC | Integrated Retirement Community



Cedars Village

RETIREMENT VILLAGES

Cedars Village is a haven for walkers, golfers and wildlife enthusiasts.

18 Homewood Court



A beautifully renovated two-bedroom first floor apartment in Homewood Court with attractive views toward the Mansion House.



Apartment



2 Bedrooms



2 Bathrooms



Balcony

Key features:

- Apartment with Juliet balcony
- Dual aspect sitting/dining room
- En-suite shower room
- EPC Rating: C

£410,000
Leasehold*

Cedars Village is a haven for walkers, golfers and wildlife enthusiasts.

Neighbouring towns include Watford, Hemel Hempstead and High Wycombe, perfect for trips out and bustling shopping centres. With such easy travel links into London, take advantage of the many theatres, museums, concerts, shops and restaurants the city has to offer. Or head out to the Chiltern Hills for miles and miles of hiking and cycling trails, pubs and farm shops.

Amenities and features:

- Set within 22 acres of gardens, meadows and orchards
- Grade II Listed mansion
- Conservatory
- A packed calendar of resident events
- Woodland walks and games lawn



A brand newly renovated two bedroom apartment with unrivalled Mansion House views. Private front door leads to a hallway housing a walk-in utility cupboard with a Hotpoint washer/dryer. Off hallway; a sunny sitting room with a Juliet balcony with unrivalled views over to the Mansion House. The well designed corner kitchen provides an open plan layout with convenience in mind with a range of fitted units, Lamona integrated appliances including a fridge/freezer and dishwasher, an induction hob and a Neff built-in eye level oven. Off hallway; master bedroom with built-in double wardrobes. En-suite to master bedroom, with a modern level access shower. Second bedroom has a single built-in cupboard and a cupboard housing a Glow-Worm Combi-Boiler. All properties are pre-wired for Virgin Media. Wall mounted call monitor for emergency assistance and a personal alarm necklace to alert a first responder. Lift and stairs to first floor.

Cedars Village sits in an idyllic spot set opposite the common, away from the main road amidst 22 acres of landscaped gardens. Built around the exclusive Grade II listed mansion house with its Victorian conservatory it boasts an unrivalled ambience. Newly refurbished to a high standard, facilities include bistro-bar, library, restaurant, convenience store and croquet/putting lawn. Opening soon are the year-round conservatory, hair salon, health centre and activities room. Cedars Village provides comfort and security where community and lifestyle are of paramount importance.

