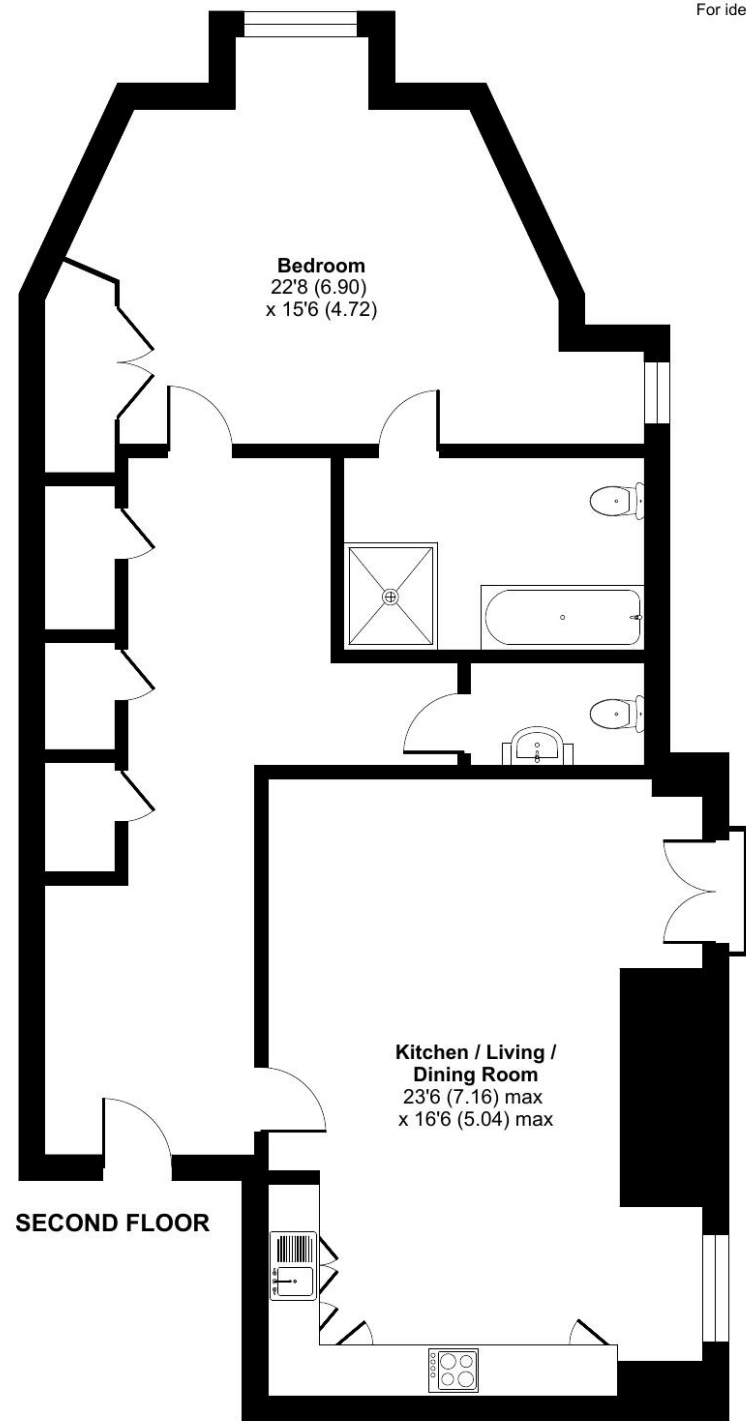


Elmbridge Village, Essex Drive, Cranleigh, GU6

Approximate Area = 1049 sq ft / 97.4 sq m
For identification only - Not to scale



Talk to the team today to find out more or to arrange a visit:

01483 672 629 | ElmbridgeVillageSales@retirementvillages.co.uk



© IRC | Integrated Retirement Community



Elmbridge Village

Elmbridge Village is a thriving community where you can join in everything, or simply relax.

RETIREMENT
VILLAGES

18 ELMBRIDGE MANOR



A beautifully spacious one-bedroom apartment with stunning views across the croquet lawn.



Apartment



1 Bedrooms



2 Bathrooms

Key features:

- Spacious apartment
- Views across the Croquet lawn
- Convenient living
- EPC Rating: C

£490,000

Leasehold*



Elmbridge Village is a thriving community where you can join in everything, or simply relax.

Elmbridge is just outside Cranleigh, eight miles southeast of Guilford. It has a vibrant high street made up of independent shops, cafes, restaurants and typical amenities such as supermarkets, leisure and health centres. From festivals and arts to the Cranleigh Bowls Club and the Cranleigh Cricket Academy, there is plenty going on year round.

Amenities and features:

- Nature walk and allotments
- On site restaurant, bar and lounge
- A village shop
- Wellness centre
- Hair salon
- A packed calendar of events

The Juliet balcony in the sitting room brings in lovely views and a wonderful sense of the outdoors, enhancing the spacious accommodation and creating a truly special feel. The open plan kitchen/living room is flooded with light and has plenty of space for a dining table. The modern fully fitted kitchen is complete with an integrated Zanussi fridge freezer, Neff hob and extractor fan, eye level electric oven Zanussi dishwasher and Hotpoint washing machine. Double bedroom with en suite bathroom with separate shower and fitted cupboards. Separate guest cloakroom. There are also 3 useful cupboards in the hallway providing additional storage.

Elmbridge is a well-established village with 276 homes, including bungalows and apartments, set within in 27 acres of landscaped grounds. Located near the charming Cranleigh village, Elmbridge offers residents a range of amenities such as a restaurant, a lively bar, village hall, hair salon, croquet lawn, on-site store, library, and regular doctor's surgeries. Those with green fingers can enjoy our lively allotments, and there's a beautiful walking meadow and daily bus service for a well-rounded lifestyle.

