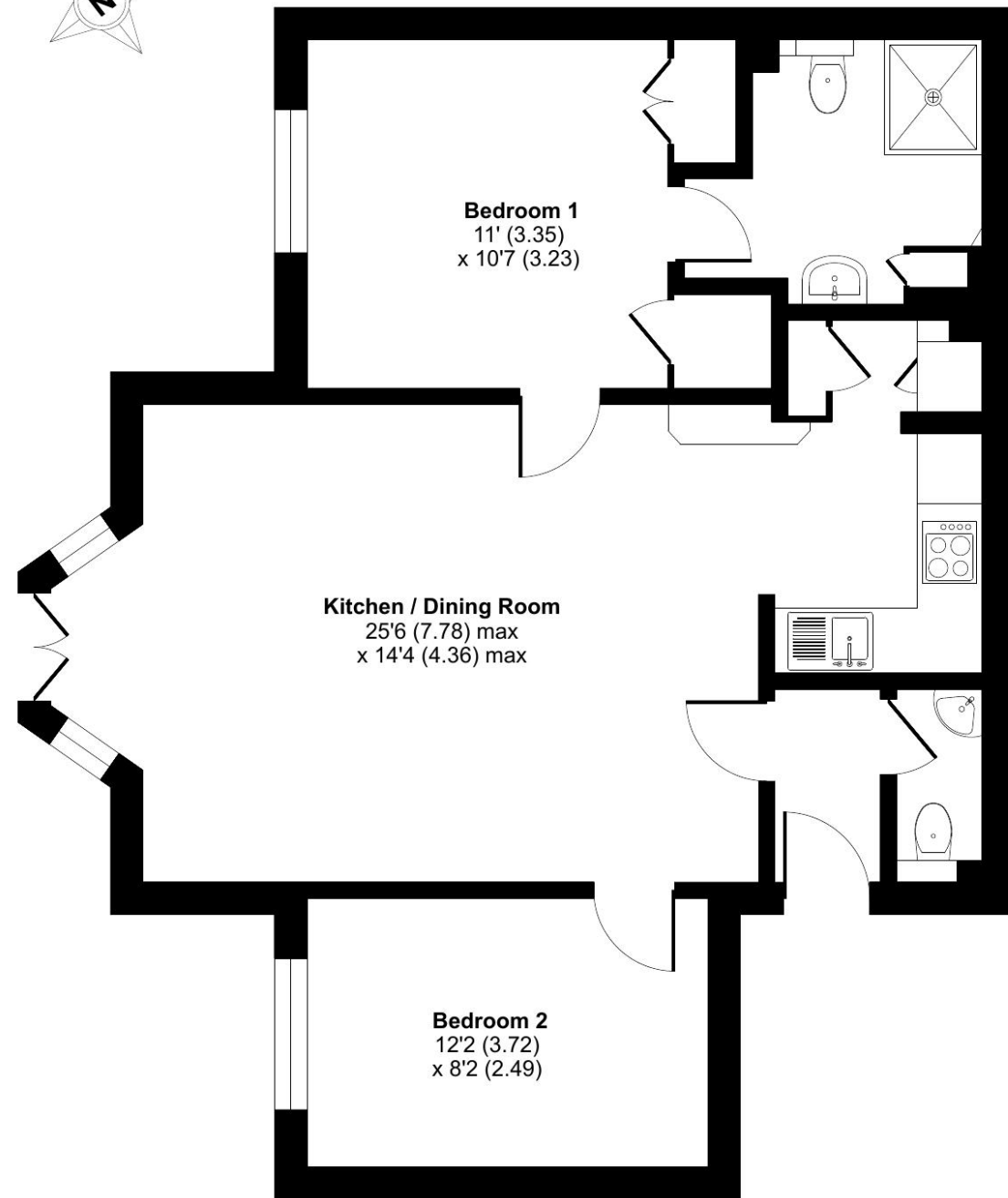


**Lansborough, Thamesfield Village, Henley-on-Thames**

Approximate Area = 720 sq ft / 66.8 sq m  
For identification only - Not to scale



**GROUND FLOOR**

Talk to the team today to find out more or to arrange a visit:

**01491 736 467 | [ThamesfieldVillageSales@retirementvillages.co.uk](mailto:ThamesfieldVillageSales@retirementvillages.co.uk)**



© IRC | Integrated Retirement Community



# Thamesfield Village

RETIREMENT VILLAGES

*Thamesfield is perfect for those looking to keep the diary full and body and mind active.*

## 17 LANSBOUROUGH



*Situated on the ground floor, this two bedroom modernised apartment home offers the convenience of easy access to the community's amenities, including social spaces, beautifully landscaped gardens, and leisure facilities – all just steps away.*

**£5,950**

Monthly inclusive charge



Apartment



2 Bedrooms



1 Bathrooms

### Key features:

- Ground floor apartment
- 2 Bedrooms with En Suite
- Located within the main building
- EPC Rating: C



# Thamesfield is perfect for those looking to keep the diary full and body and mind active.

Located on the edge of the beautiful and historic town of Henley-Up-on-Thames. Great local facilities are just a short walk away along with lots of small, independent shops and restaurants as well as the usual high street names. Reading and Windsor are easily accessible if you need to head into a busier setting. London, with all the culture it has to offer, can be reach in under an hour from the local train station.

### Amenities and features:

- Fantastic grounds and riverside location
- Converted Victorian country house
- Great transport links into London
- A packed calendar of resident events
- River facing lounge
- Pets are more than welcome!



The two-bedroom ground floor apartment features a spacious lounge with an open plan kitchen designed for modern living. It is fitted with a Caple hob, Bosch microwave, Neff oven, and a Nueue dishwasher alongside a matching washer/dryer, offering a fully equipped and practical home setup.

Thamesfield Retirement Village, nestled by Henley-on-Thames' riverbanks, features a 19th-century mansion amid three acres of lush gardens, exuding opulence. We take pride in being a small intimate community where residents partake in activities such as croquet, play readings, quizzes, films, and excursions. All our properties are conveniently accessible within the main building granting easy access to the riverfront restaurant, bar and decking area. A bridge stroll leads to Henley's historic town, and a bus outside provides access to amenities. Alternatively, an onsite restaurant is perfect for entertaining guests. Weekly services include an hour of cleaning, bed linen laundry, round-the-clock assistance, morning coffee, and afternoon tea. The village covers heating, water, and electricity costs for apartments and communal spaces, creating a convenient and luxurious retirement experience.