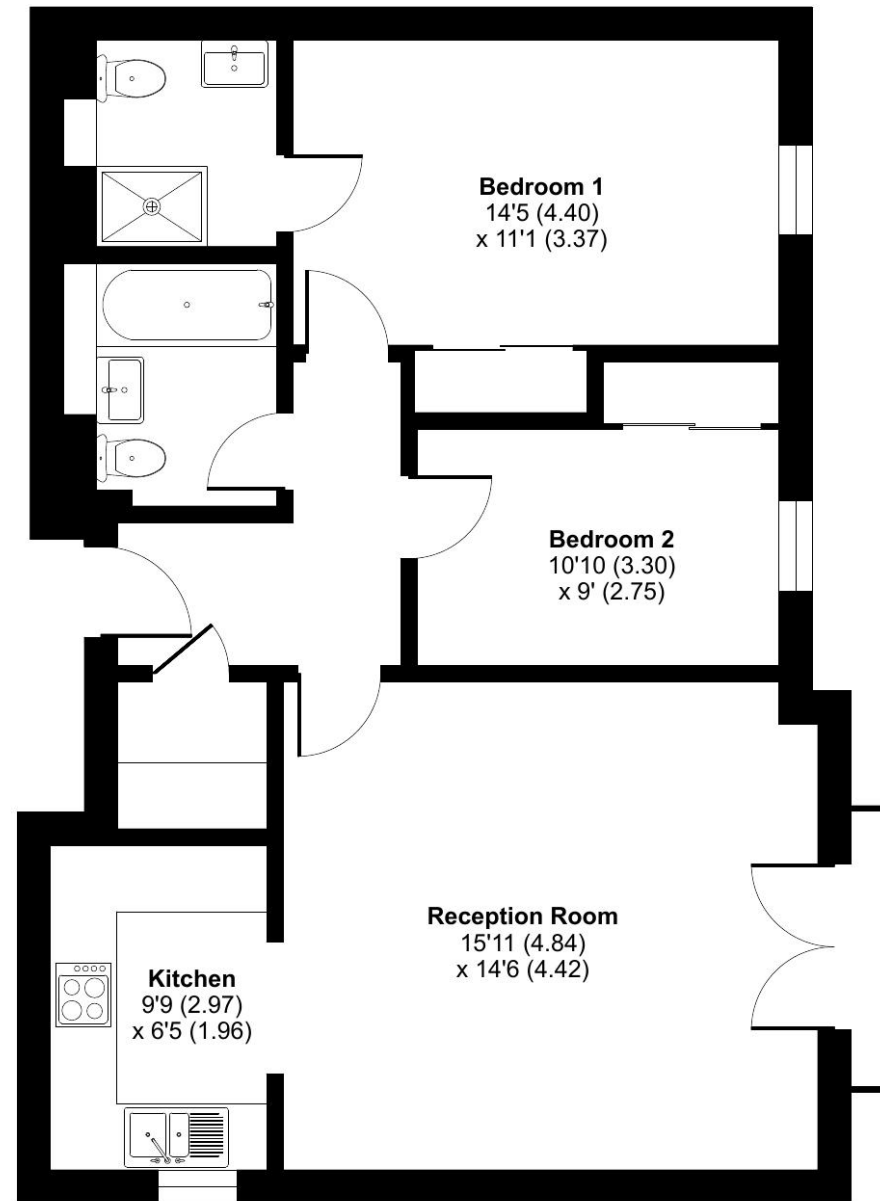


Cedars Village, Chorleywood, Rickmansworth, WD3

Approximate Area = 716 sq ft / 66.5 sq m
For identification only - Not to scale



FIRST FLOOR

Talk to the team today to find out more or to arrange a visit:

01923 913 871 | CedarsVillageSales@retirementvillages.co.uk



IRC | Integrated Retirement Community



Cedars Village

Cedars Village is a haven for walkers, golfers and wildlife enthusiasts.

RETIREMENT
VILLAGES

16 WILDWOOD COURT



A first floor, two bedroom apartment, living room features a Juliet balcony with views over the rear grounds. Lift access to first floor.



Apartment



2 Bedrooms



2 Bathrooms

Key features:

- Attractive view of grounds
- First floor apartment with lift access
- En-suite to master bedroom
- EPC Rating: C

£3,250

Monthly inclusive charge

Cedars Village is a haven for walkers, golfers and wildlife enthusiasts.

Neighbouring towns include Watford, Hemel Hempstead and High Wycombe, perfect for trips out and bustling shopping centres. With such easy travel links into London, take advantage of the many theatres, museums, concerts, shops and restaurants the city has to offer. Or head out to the Chiltern Hills for miles and miles of hiking and cycling trails, pubs and farm shops.

Amenities and features:

- Set within 22 acres of gardens, meadows and orchards
- Grade II Listed mansion
- Conservatory
- A packed calendar of resident events
- Woodland walks and games lawn



Front door leading to hallway with a utility cupboard housing a washer/dryer and worktop. Spacious living room featuring a Juliet balcony overlooking the rear garden. Fully fitted kitchen with integrated fridge/freezer, dishwasher and oven. Master bedroom with en-suite shower room and built-in double wardrobe. Second bedroom with built-in cupboard. Separate family bathroom with bath. Emergency call monitor system in property with 24 hour emergency response from on-site wellbeing team.

Cedars Village, set in 22 acres, is built around the exclusive Grade II listed mansion house which is the focal point of the community, providing facilities which include Victorian conservatory, Village Hall, restaurant, bistro, library, hobbies room, laundry, convenience store and croquet/putting lawn. In addition to the substantial grounds of Cedars Village, the adjacent Chorleywood common provides a wonderful variety of walks. With outstanding transport links into London via J18 of the M25 the village also benefits from being close to Chorleywood Village with its shops, restaurants, Metropolitan tube and rail station into Central London (Marylebone 33 minutes)

