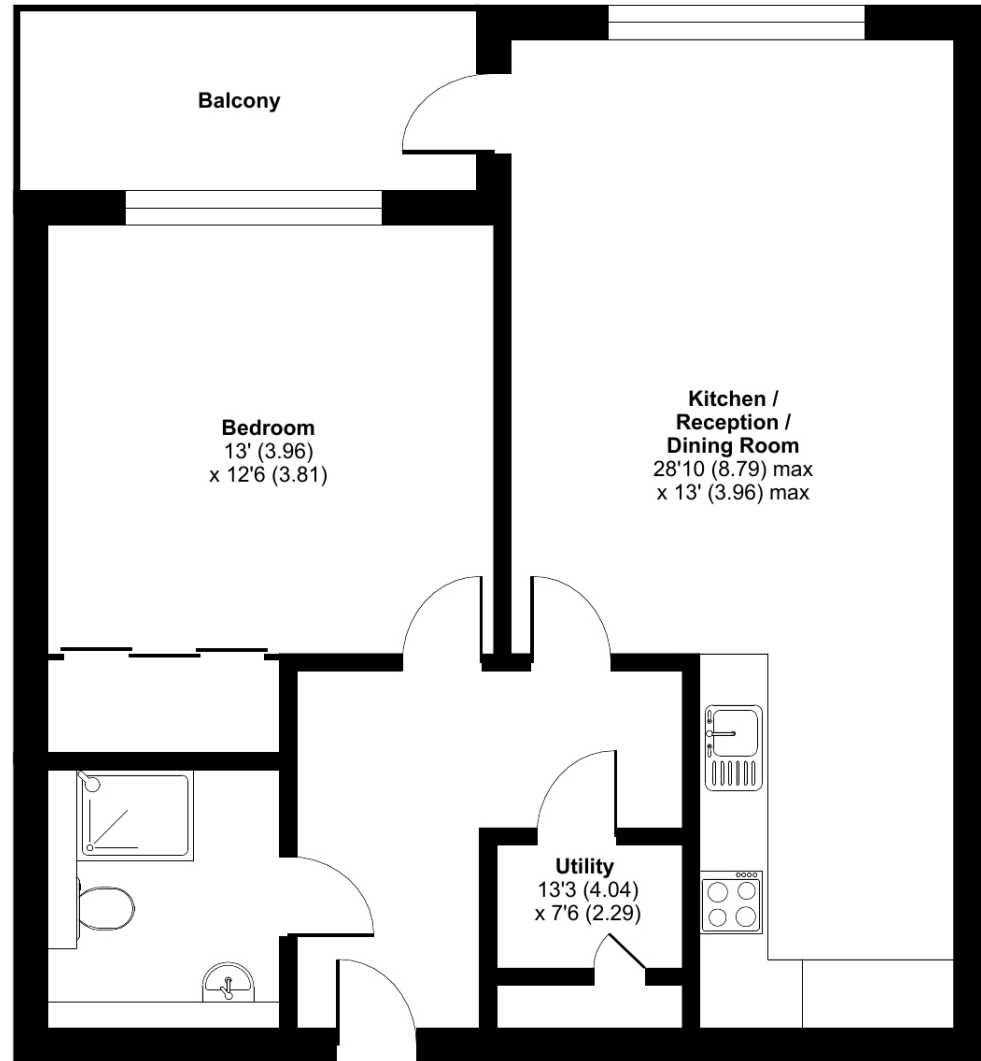


Charters Village Drive, East Grinstead, RH19

Approximate Area = 688 sq ft / 63.9 sq m

For identification only - Not to scale



FIRST FLOOR

Floor plan produced in accordance with RICS Property Measurement 2nd Edition, incorporating International Property Measurement Standards (IPMS2 Residential). © nchecom 2025. Produced for Retirement Security Limited. REF: 1266788

Talk to the team today to find out more:

01342 870 871
ChartersVillageSales@retirementvillages.co.uk

Charters Village
East Grinstead
West Sussex
RH19 2HQ



Charters Village

RETIREMENT
VILLAGES

The perfect place for somebody
who loves a full diary



16 Medway House

A pristine 1-bedroom, first-floor apartment with a west-facing balcony, offering woodland views. Conveniently located near the clubhouse with a range of activities, it features integral appliances and a walk-in shower.

£340,000
Other charges apply
Leasehold



1 Bedrooms



1 Bathrooms



Apartment



Balcony

Key features:

- Well Presented First Floor apartment
- Private balcony
- Fitted Kitchen
- EPC: B



Charters Village is perfect for those looking to keep the diary full and body and mind active.

Packed full of amenities and features:

- Beautiful extensive grounds based around Charters Towers
- Games lawn and pavilion
- Onsite shop
- Sunroom
- A packed calendar of events and activities

Charters Village is located close to East Grinstead, where you'll find plenty of essential amenities and facilities. If you're a fan of the great outdoors, Chartham Park is a short 10-minute walk away, a gorgeous place to play golf, visit the gym, have a bite to eat in the restaurant or simply take a stroll.



An Immaculate 1 bedroom, first floor apartment with west facing balcony conveniently located with views over the woodland with abundance of wildlife, easy access to the clubhouse, with array of activities to enjoy. Integral appliances within your own kitchen as well as walk-in shower.

Features of note include camera entry phone system for security, a private balcony that the buyer has use of and the convenience for access, generous ceiling height, underfloor heating throughout, extensive storage cupboards and generously sized bathrooms with chrome heated towel rails.

Medway House is set in the extensive grounds of the picturesque Charters Village – formerly known as Charters Towers, a fine 'Arts and Craft' mansion with its own private grounds. The property is well served for shopping with the charming and attractive local village of Lingfield (about 2.5 miles to the north) or for your larger supermarkets, including a Waitrose and Sainsbury's in the historic town of East Grinstead – about 1.3 miles to the south. East Grinstead train station is about 1.7 miles. For more extensive shopping - Royal Tunbridge Wells (about 15 miles to the east).

