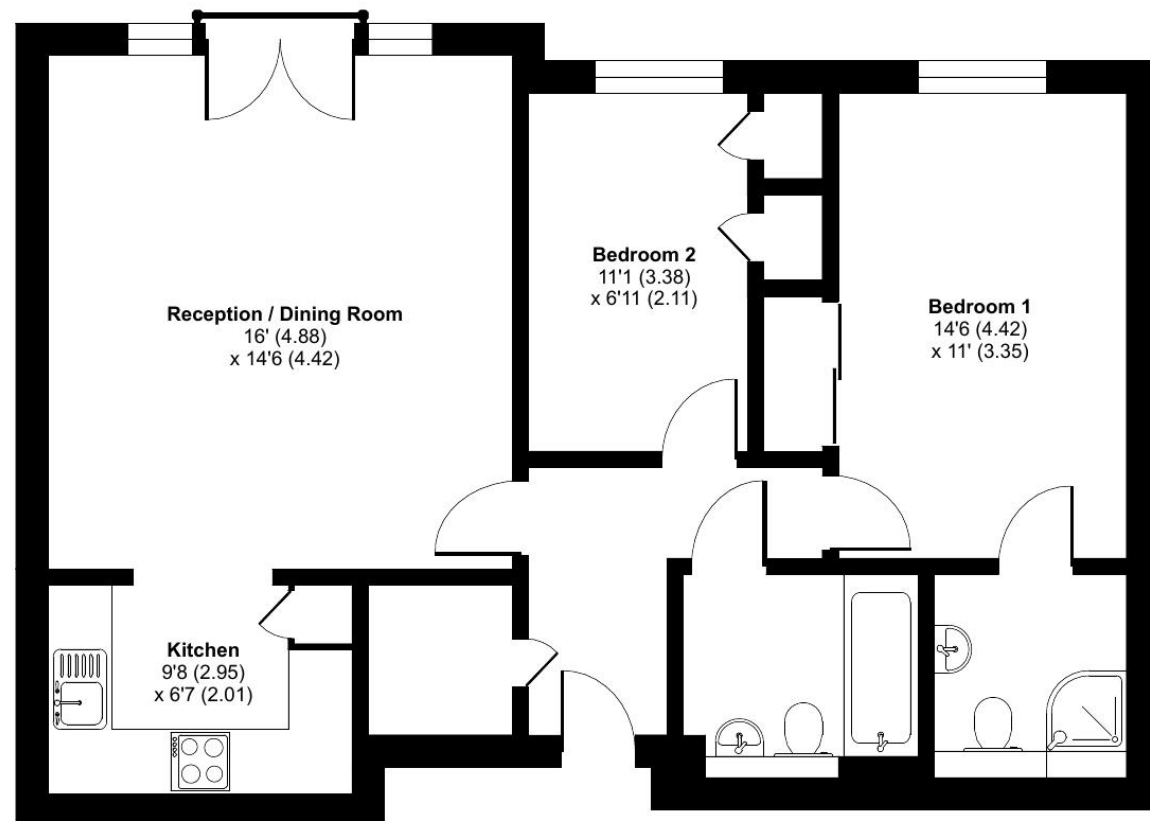


Homewood Court, Cedars Village, Chorleywood,

Approximate Area = 725 sq ft / 67.4 sq m

For identification only - Not to scale



FIRST FLOOR

Talk to the team today to find out more or to arrange a visit:

01923 913 871 | CedarsVillageSales@retirementvillages.co.uk



© IRC | Integrated Retirement Community



Cedars Village

Cedars Village is a haven for walkers, golfers and wildlife enthusiasts.

RETIREMENT
VILLAGES

16 HOMEWOOD COURT



A modern, immaculately presented two bedroom, first floor apartment in good condition throughout.



Apartment



2 Bedrooms



2 Bathrooms

Key features:

- Attractive property
- Two Bedrooms/Two bathrooms
- First floor with lift access
- EPC Rating: C

£360,000

Leasehold*

Cedars Village is a haven for walkers, golfers and wildlife enthusiasts.

Neighbouring towns include Watford, Hemel Hempstead and High Wycombe, perfect for trips out and bustling shopping centres. With such easy travel links into London, take advantage of the many theatres, museums, concerts, shops and restaurants the city has to offer. Or head out to the Chiltern Hills for miles and miles of hiking and cycling trails, pubs and farm shops.

Amenities and features:

- Set within 22 acres of gardens, meadows and orchards
- Grade II Listed mansion
- Conservatory
- A packed calendar of resident events
- Woodland walks and games lawn



Secure entry lobby with entry phone system. Lift access to first floor and private front door to entrance hall: Call monitor system to main house with 24 hour emergency assistance, large cupboard with storage space, panel glazed doors to spacious sitting room. Juliet balcony with view of communal gardens. The modern and stylish open plan, fully fitted kitchen is designed with convenience in mind with a range of cream coloured fitted units, a matching grey worktop, AEG integrated appliances including a fridge/freezer, washer/dryer, induction hob and an under counter oven. Two bedrooms, master bedroom with double wardrobe with sliding doors, a stylish en-suite shower room and a matching family bathroom with bath. Second bedroom with a built-in single cupboard and a cupboard housing a British Gas Combi-Boiler.

Cedars Village, set in 22 acres, is built around the exclusive Grade II listed mansion house which is the focal point of the community, providing facilities which include Victorian conservatory, restaurant, bistro, library, hobbies room, laundry, convenience store and croquet/putting lawn. In addition to the substantial grounds of Cedars Village, the adjacent Chorleywood common provides a wonderful variety of walks. With outstanding transport links into London via J18 of the M25 the village also benefits from being close to Chorleywood Village with its shops, restaurants, Metropolitan tube and rail station into Central London (Marylebone 33 minutes)

