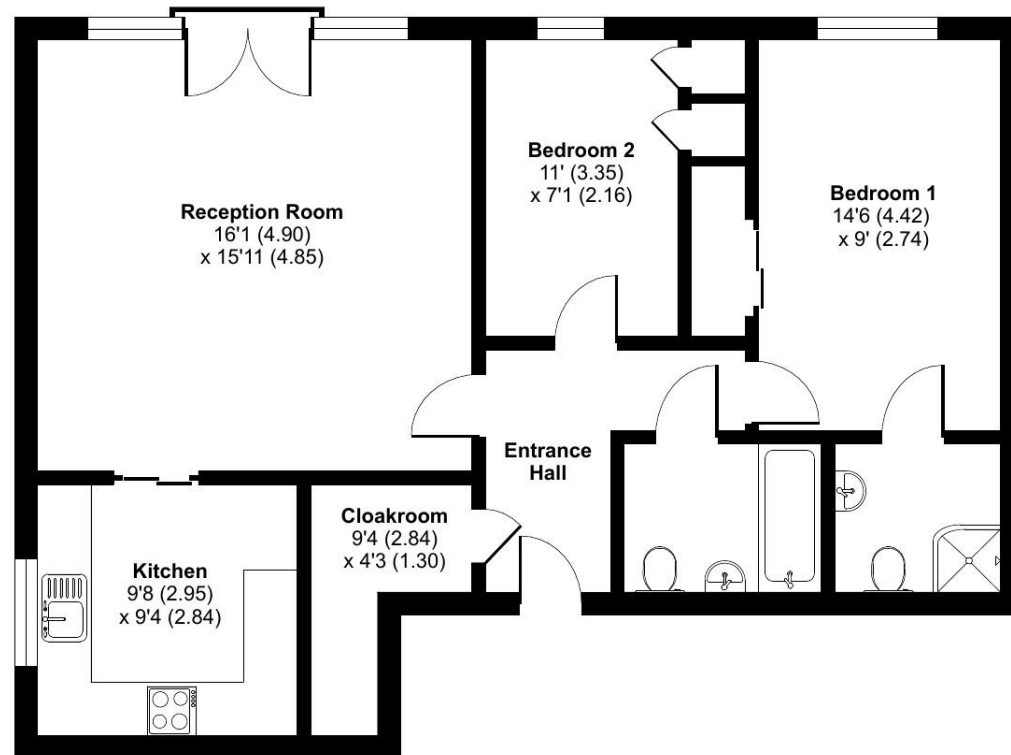


## 15 Homewood Court, Badgers Walk, WD3

Approximate Area = 802 sq ft / 74.5 sq m

For identification only - Not to scale



GROUND FLOOR



Floor plan produced in accordance with RICS Property Measurement Standards incorporating International Property Measurement Standards (IPMS2 Residential). © nichecom 2024. Produced for Retirement Villages. REF: 1105049

Talk to the team today to find out more:

01923 913 871  
CedarsVillageSales@retirementvillages.co.uk

Cedars Village  
Chorleywood  
Hertfordshire  
WD3 5GL



# Cedars Village

RETIREMENT  
VILLAGES

*A haven for walkers, golfers and wildlife enthusiasts*



## 15 Homewood Court

*A fully refurbished two bedroom first floor apartment in Homewood Court. The property benefits from a spacious fitted kitchen and living room, a utility cupboard, bathroom and en-suite. All finished to a high standard.*

**£395,000**

Other charges apply

**Leasehold**



2 Bedrooms



2 Bathrooms



Apartment

Key features:

- Newly refurbished
- Large fully fitted kitchen
- En-suite to master bedroom
- EPC Rating: C



Front door to; Entrance hall: a large walk-in utility cupboard with Beko washer/dryer. Wall mounted call monitor system to 24 hour assistance. A bright, spacious sitting room with double doors leading to the Juliet balcony. A larger than average open plan, fully fitted kitchen designed with convenience in mind with a range of fitted units, Lamona integrated appliances including a fridge/freezer dishwasher, an induction hob and a Neff built-in eye level oven. Bedroom One with built-in double wardrobes with sliding doors, En-Suite shower room with walk in shower. Bedroom Two with built-in single wardrobe, further cupboard housing a Glow-Worm Combi-Boiler. Off hallway; family bathroom with a bath.

Cedars Village sits in an idyllic spot set opposite the common, away from the main road amidst 22 acres of landscaped gardens. Built around the exclusive Grade II listed mansion house with its Victorian conservatory it boasts an unrivalled ambience. Newly refurbished to a high standard, facilities include bistro-bar, library, convenience store, restaurant and croquet/putting lawn. Opening soon are the year-round conservatory, hair salon and health centre. Cedars Village provides comfort and security where community and lifestyle are of paramount importance.

## Cedars Village is a haven for walkers, golfers and wildlife enthusiasts.

*Packed full of amenities and features:*

- Set within 22 acres of gardens, meadows and orchards
- Grade II Listed mansion
- Conservatory
- A packed calendar of resident events
- Woodland walks and games lawn

Neighbouring towns include Watford, Hemel Hempstead and High Wycombe, perfect for trips out and bustling shopping centres. With such easy travel links into London, take advantage of the many theatres, museums, concerts, shops and restaurants the city has to offer. Or head out to the Chiltern Hills for miles and miles of hiking and cycling trails, pubs and farm shops.

