



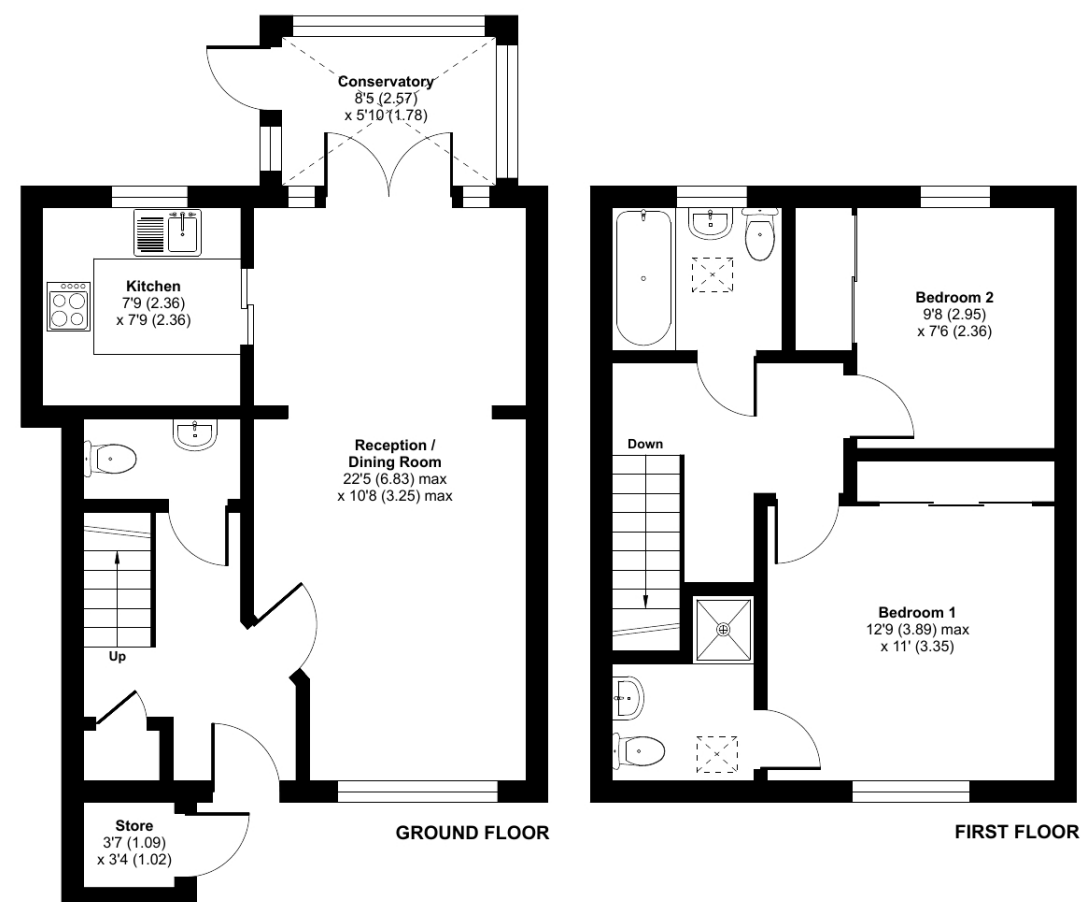
Cedars Walk, WD3

Approximate Area = 846 sq ft / 78.5 sq m

Outbuilding = 12 sq ft / 1.1 sq m

Total = 858 sq ft / 79.7 sq m

For identification only - Not to scale



Floor plan produced in accordance with RICS Property Measurement Standards incorporating International Property Measurement Standards (IPMS2 Residential). © nichecom 2023. Produced for Retirement Villages. REF: 1004675

Talk to the team today to find out more:

01923 913 871

CedarsVillageSales@retirementvillages.co.uk

Cedars Village
Chorleywood
Hertfordshire
WD3 5GL



Cedars Village

RETIREMENT
VILLAGES

*A haven for walkers, golfers and
wildlife enthusiasts*



15 Cedars Walk

*Attractive two bedroom semi-detached cottage, with conservatory and en-suite shower room.
Positioned on Cedars Walk
overlooking the wildlife meadow.*

£395,000

Other charges apply

Leasehold



2 Bedrooms



2 Bathrooms



Cottage



Conservatory

Key features:

- **Semi-detached cottage**
- **Conservatory**
- **Two bedrooms and en-suite**
- **EPC: C**



Semi-detached cottage well positioned on Cedars Walk with access to the mansion house and views of the wildlife meadow. Living room with arch to dining area, fitted kitchen with appliances, conservatory, downstairs WC. Two bedrooms both with built-in wardrobes. Ensuite shower room and family bathroom. Private southwest facing patio area and beautifully maintained communal grounds.

Cedars Village sits in an idyllic spot set opposite the common, away from the main road amidst 22 acres of landscaped gardens. Built around the exclusive Grade II listed mansion house with its Victorian conservatory it boasts an unrivalled ambience. Newly refurbished to a high standard, facilities include bistro-bar, library, convenience store and croquet/putting lawn. Opening soon are the restaurant, year-round conservatory, hair salon, health centre and activities room. Cedars Village provides comfort and security where community and lifestyle are of paramount importance.

Cedars Village is a haven for walkers, golfers and wildlife enthusiasts.

Packed full of amenities and features:

- **Set within 22 acres of gardens, meadows and orchards**
- **Grade II Listed mansion**
- **Conservatory**
- **A packed calendar of resident events**
- **Woodland walks and games lawn**

Neighbouring towns include Watford, Hemel Hempstead and High Wycombe, perfect for trips out and bustling shopping centres. With such easy travel links into London, take advantage of the many theatres, museums, concerts, shops and restaurants the city has to offer. Or head out to the Chiltern Hills for miles and miles of hiking and cycling trails, pubs and farm shops.

