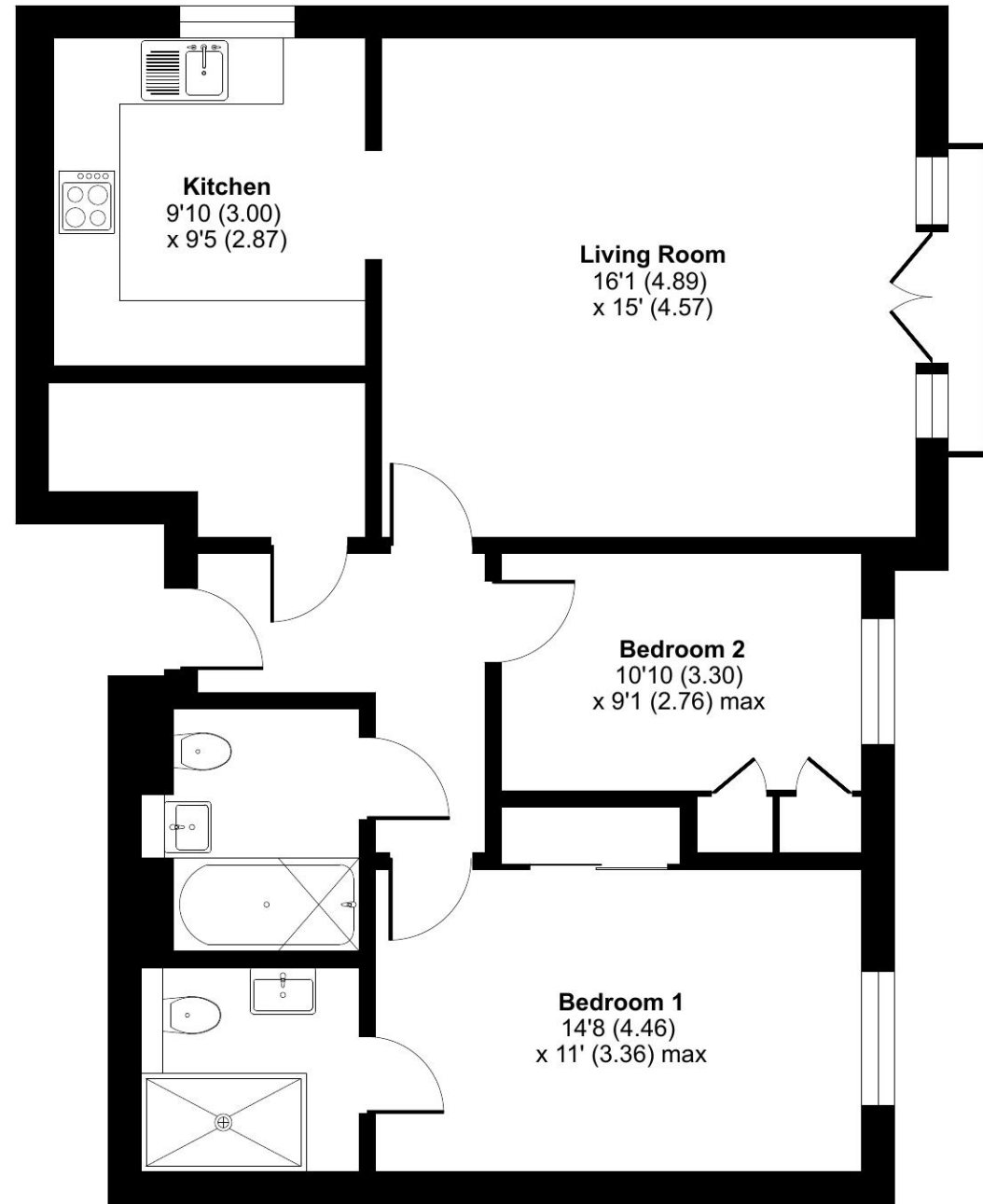




**Woodland Place, Cedars Village, Chorleywood,
Rickmansworth, WD3**

Approximate Area = 788 sq ft / 73.2 sq m
For identification only - Not to scale



FIRST FLOOR

Talk to the team today to find out more or to arrange a visit:

01923 913 871 | CedarsVillageSales@retirementvillages.co.uk



IRC | Integrated Retirement Community



Cedars Village

Cedars Village is a haven for walkers, golfers and wildlife enthusiasts.

RETIREMENT VILLAGES

12A WOODLAND PLACE



A spacious two bedroom first floor apartment with a good size kitchen and attractive woodland views.



Apartment



2 Bedrooms



2 Bathrooms



Juliet Balcony

Key features:

- Attractive Woodland Views
- Juliet Balcony
- Two bedroom, two bathrooms
- EPC Rating: C

£345,000

Leasehold*

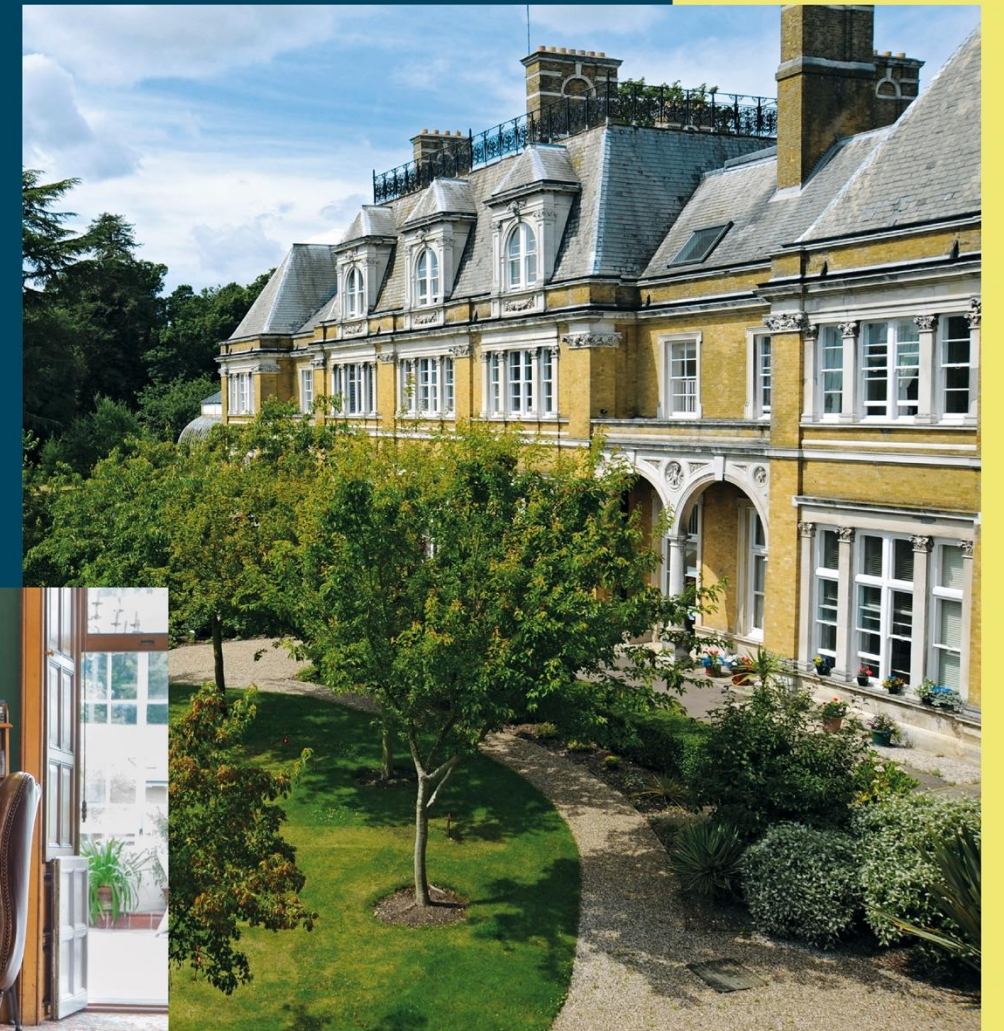


Cedars Village is a haven for walkers, golfers and wildlife enthusiasts.

Neighbouring towns include Watford, Hemel Hempstead and High Wycombe, perfect for trips out and bustling shopping centres. With such easy travel links into London, take advantage of the many theatres, museums, concerts, shops and restaurants the city has to offer. Or head out to the Chiltern Hills for miles and miles of hiking and cycling trails, pubs and farm shops.

Amenities and features:

- Set within 22 acres of gardens, meadows and orchards
- Grade II Listed mansion
- Conservatory
- A packed calendar of resident events
- Woodland walks and games lawn



This larger than average first floor apartment. Hallway, walk-in storage cupboard fitted with shelving. Wall mounted call monitor for emergency assistance and a personal alarm necklace to alert a first responder. Glass panelled doors leading to a bright and spacious living room, double doors to a Juliet balcony. Archway to a good-sized kitchen, range of pine fitted units, white drawer unit, freestanding white Bosch washing machine, freestanding white Zanussi dryer, freestanding white Liebherr fridge/freezer, Tricity Bendix Electric hob, under counter white Tricity Bendix oven, window to side aspect, sink with drainer.

Renovated bathroom with walk-in tiled shower with tiled seat. Master bedroom with built-in wardrobe. Renovated en-suite shower room, shower cubicle. Second bedroom, built-in cupboard, cupboard housing a Worcester Boiler. All properties are pre-wired for Virgin Media. There is a Lift and stairs to all floors. All properties benefit from 1 hour housekeeping and a laundry service for bedding.

