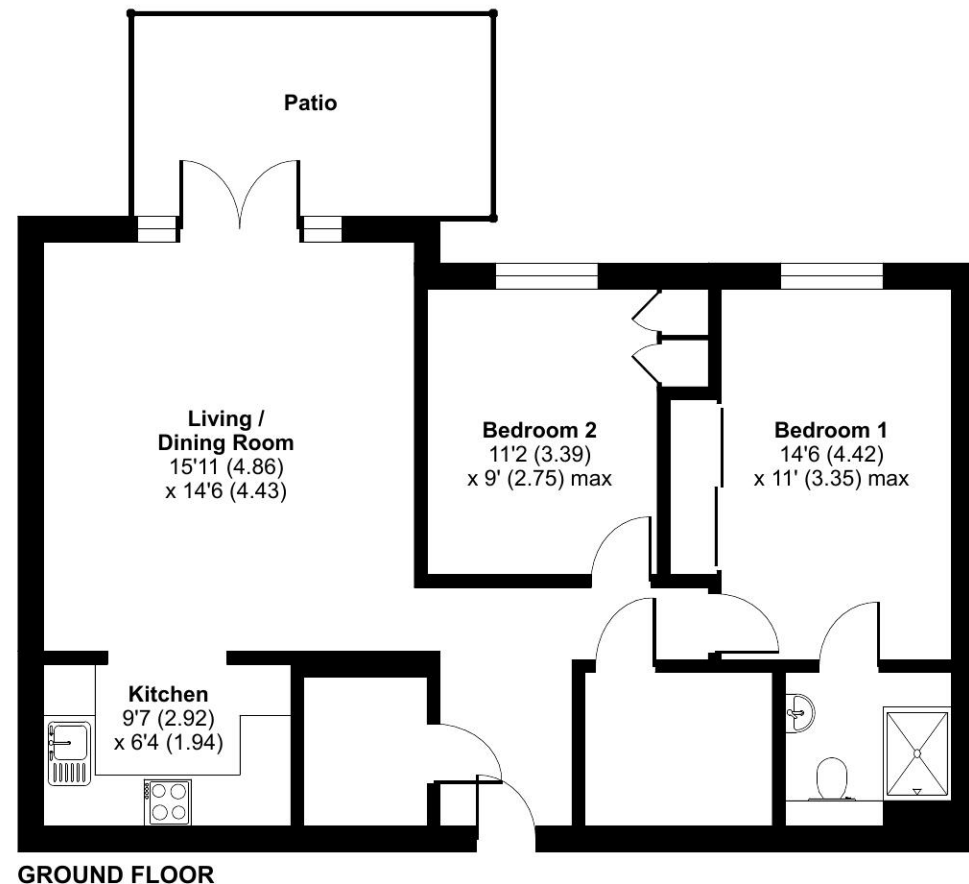




Homewood Court, Cedars Village, Chorleywood, Rickmansworth, WD3

Approximate Area = 772 sq ft / 71.7 sq m
For identification only - Not to scale



Talk to the team today to find out more or to arrange a visit:

01923 913 871 | CedarsVillageSales@retirementvillages.co.uk



© IRC | Integrated Retirement Community



Cedars Village

Cedars Village is a haven for walkers, golfers and wildlife enthusiasts.

RETIREMENT
VILLAGES

12 Homewood Court



Situated in the popular Homewood Court is this ground floor two bedroom apartment with access to a lovely patio area.



Apartment



2 Bedrooms



2 Bathrooms

Key features:

- Ground floor apartment
- Two bedrooms and en-suite
- Patio area
- EPC Rating: C

£340,000
Leasehold*



Two bedroom ground floor apartment in Homewood Court with patio area. Entrance hallway with large storage cupboard, living room, fitted kitchen, bedroom one has an en-suite shower room, large storage cupboard (previously the family bathroom with plumbing). All properties are pre-wired for Virgin Media. There is a wall mounted call monitor for emergency assistance and a personal alarm necklace to alert a first responder.

Cedars Village sits in an idyllic spot set opposite the common, away from the main road amidst 22 acres of landscaped gardens. Built around the exclusive Grade II listed mansion house with its Victorian conservatory it boasts an unrivalled ambience. Newly refurbished to a high standard, facilities include bistro-bar, library, convenience store and croquet/putting lawn. Opening soon are the restaurant, year-round conservatory, hair salon, health centre and activities room. Cedars Village provides comfort and security where community and lifestyle are of paramount importance.

Cedars Village is a haven for walkers, golfers and wildlife enthusiasts.

Neighbouring towns include Watford, Hemel Hempstead and High Wycombe, perfect for trips out and bustling shopping centres. With such easy travel links into London, take advantage of the many theatres, museums, concerts, shops and restaurants the city has to offer. Or head out to the Chiltern Hills for miles and miles of hiking and cycling trails, pubs and farm shops.

Amenities and features:

- Set within 22 acres of gardens, meadows and orchards
- Grade II Listed mansion
- Conservatory
- A packed calendar of resident events
- Woodland walks and games lawn

