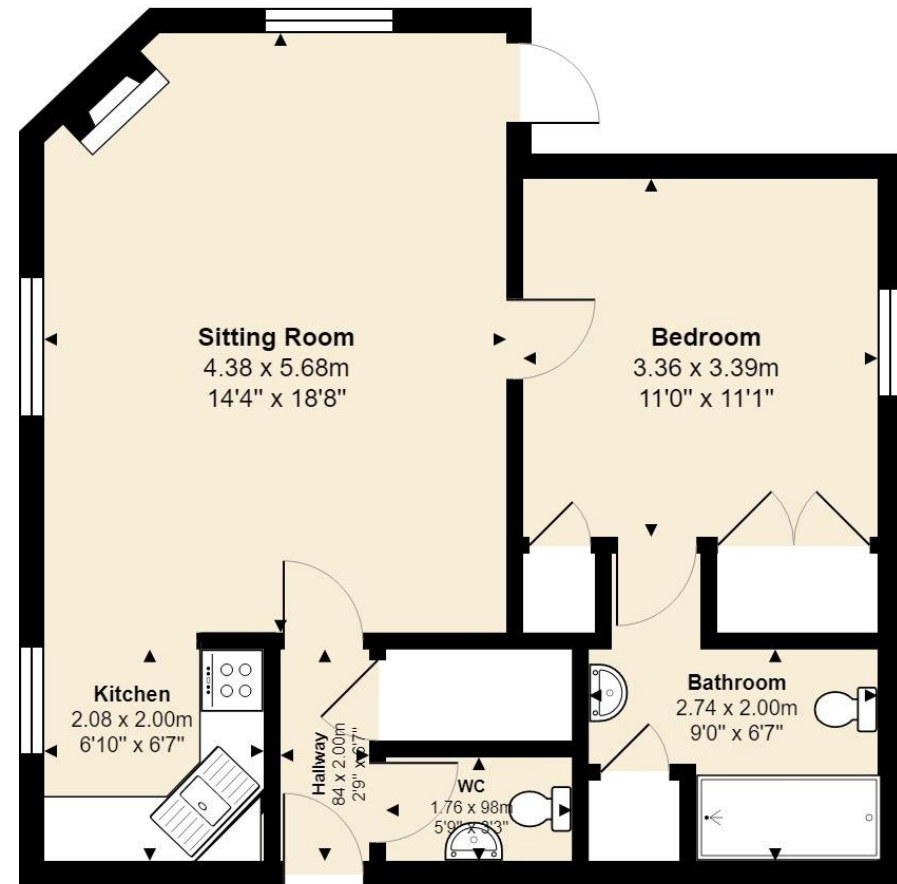


11 Buckingham, Wargrave Road, Henley-on-Thames



Total Area: 56.5 m² ... 608 ft²

All measurements are approximate and for display purposes only

Talk to the team today to find out more:

01491 736 467
ThamesfieldVillageSales@retirementvillages.co.uk

Thamesfield Retirement Village
Henley-on-Thames
Oxfordshire
RG9 2LX



Thamesfield

RETIREMENT
VILLAGES

*Perfect for those looking to keep
the body and mind active*



11 Buckingham

*Coming Soon - This one bedroom
retirement property is part of a
community that fosters a sense of
belonging. Enjoy the convenience of
onsite facilities, communal spaces
and a beautifully landscaped
gardens.*

£4,950
Monthly inclusive charge



1 Bedrooms



1 Bathrooms



Apartment



Balcony

Key features:

- First floor with lift access
- Riverside location
- Private balcony
- EPC Rating: D



A charming first-floor one-bedroom property offers a perfect blend of comfort and convenience, tailored to meet the unique needs of retirees seeking a peaceful and supportive community. The open plan kitchen and lounge is fitted with integrated Neff appliances including a hob, microwave and oven, offering a modern and practical cooking space. It is further complemented by a Bosch washer/dryer, providing convenient all-in-one laundry functionality. French door to the balcony with views over gardens.

The bedroom and en suite bathroom room is a serene retreat, with fitted cupboards offering ample space for a comfortable bed. The bathroom features a walk-in shower, WC and wash hand basin. Separate cloakroom for guests.

Thamesfield Retirement Village, nestled by Henley-on-Thames' riverbanks, features a 19th-century mansion amid three acres of lush gardens, exuding opulence. We take pride in being a small intimate community where residents partake in activities such as croquet, play readings, quizzes, films, and excursions. All our properties are conveniently accessible within the main building granting easy access to the riverfront restaurant, bar and decking area. A bridge stroll leads to Henley's historic town, and a bus outside provides access to amenities.

Thamesfield is perfect for those looking to keep the diary full and body and mind active.

Packed full of amenities and features:

- **Fantastic grounds and riverside location**
- **Converted Victorian country house**
- **Great transport links into London**
- **A packed calendar of resident events**
- **River facing lounge**
- **Pets are more than welcome!**

Located on the edge of the beautiful and historic town of Henley-Upon-Thames. Great local facilities are just a short walk away along with lots of small, independent shops and restaurants as well as the usual high street names. Reading and Windsor are easily accessible if you need to head into a busier setting. London, with all the culture it has to offer, can be reach in under an hour from the local train station.

