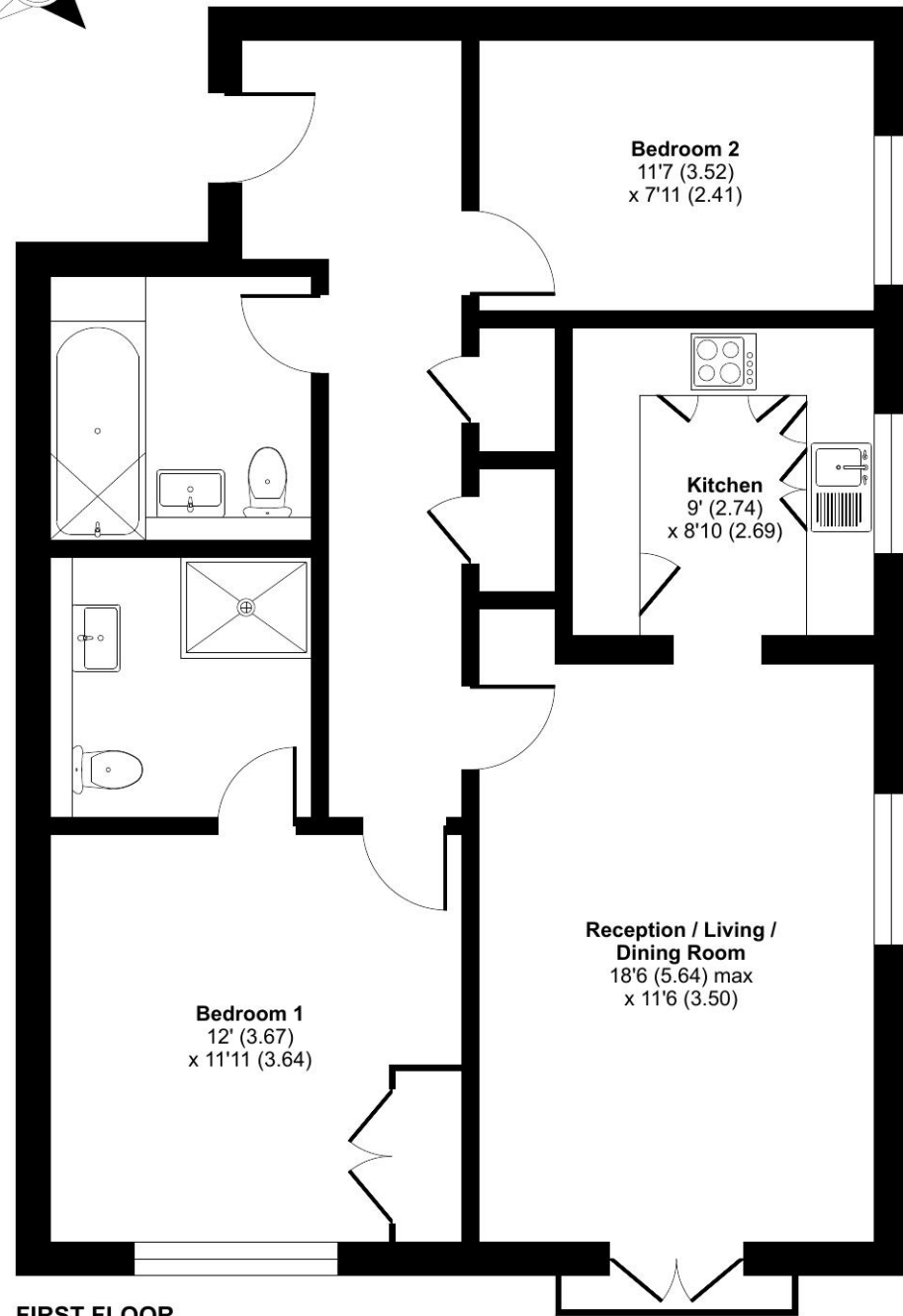


Elmbridge, Essex Drive, Cranleigh, GU6

Approximate Area = 807 sq ft / 74.9 sq m
For identification only - Not to scale



FIRST FLOOR

Talk to the team today to find out more or to arrange a visit:

01483 672 629 | ElmbridgeVillageSales@retirementvillages.co.uk



IRC | Integrated Retirement Community



Elmbridge Village

Elmbridge Village is a thriving community where you can join in everything, or simply relax.

RETIREMENT
VILLAGES

11 ARUN HOUSE



A thoughtfully designed two-bedroom first-floor lift-serviced apartment, ideally located close to the amenities of Elmbridge Village



Apartment



2 Bedrooms



2 Bathrooms

Key features:

- Lift serviced
- Close to all the amenities
- Two bathrooms
- EPC Rating: C

£450,000

Leasehold*

Elmbridge Village is a thriving community where you can join in everything, or simply relax.

Elmbridge is just outside Cranleigh, eight miles southeast of Guilford. It has a vibrant high street made up of independent shops, cafes, restaurants and typical amenities such as supermarkets, leisure and health centres. From festivals and arts to the Cranleigh Bowls Club and the Cranleigh Cricket Academy, there is plenty going on year round.

Amenities and features:

- Nature walk and allotments
- On site restaurant, bar and lounge
- A village shop
- Wellness centre
- Hair salon
- A packed calendar of events



Modern, newly decorated and newly carpeted throughout, the apartment offers a bright and sunny living room with a Juliet balcony, creating a welcoming and comfortable space to relax. The fully fitted kitchen is well appointed with integrated appliances including a Zanussi fridge freezer, dishwasher and washer dryer, together with an eye-level electric oven, Neff hob and extractor. The principal double bedroom benefits from fitted wardrobes and an en suite shower room, while the second bedroom provides flexible space for guests, hobbies or a study.

Thoughtfully designed for easy, comfortable living, this attractive apartment is ideal for anyone seeking an independent lifestyle within a vibrant and supportive village community.

Elmbridge is a well-established village with 276 homes, including bungalows and apartments, set within in 27 acres of landscaped grounds. Located near the charming Cranleigh village, Elmbridge offers residents a range of amenities such as a restaurant, a lively bar, village hall, hair salon, croquet lawn, on-site store, library, and regular doctor's surgeries. Those with green fingers can enjoy our lively allotments, and there's a beautiful walking meadow and daily bus service for a well-rounded lifestyle.

