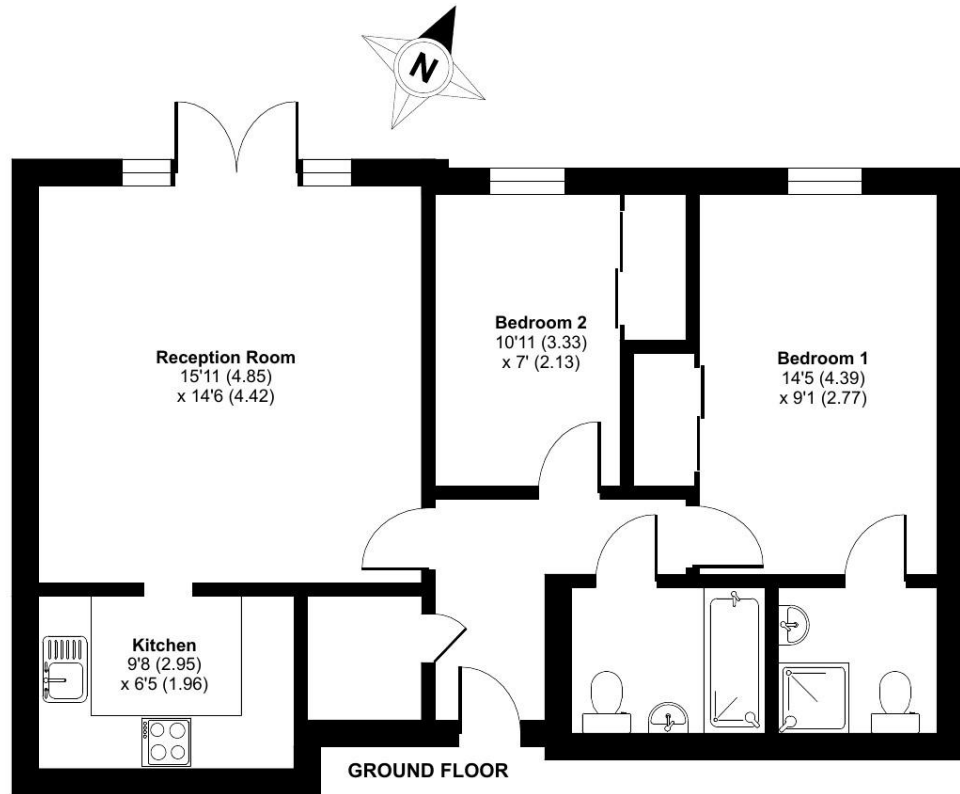


Wildwood Court, Cedars Village, Marriot Terrace, WD3

Approximate Area = 703 sq ft / 65.3 sq m

For identification only - Not to scale



Floor plan produced in accordance with RICS Property Measurement Standards incorporating International Property Measurement Standards (IPMS2 Residential). © n/checom 2023. Produced for Retirement Villages. REF: 1177127

Talk to the team today to find out more:

01923 913 871
CedarsVillageSales@retirementvillages.co.uk

Cedars Village
Chorleywood
Hertfordshire
WD3 5GL



Cedars Village

RETIREMENT VILLAGES

A haven for walkers, golfers and wildlife enthusiasts



10 Wildwood Court

Recently refurbished 2 bedroom ground floor apartment in Cedars Village with a patio.

£3,250
Monthly inclusive charge



2 Bedrooms



2 Bathrooms



Apartment

Key features:

- Recently refurbished Apartment
 - Ground Floor with patio area
 - Close to Mansion House facilities
- EPC Rating: C



Front door opens to a hallway with a built-in cupboard, door leading to a spacious living room with double doors leading to outside space with a patio. Off living room; a fully fitted kitchen with a range of units, an Electriq integrated washer/dryer and dishwasher, a Lamona integrated fridge freezer and hob, a Neff built-in eye level oven. From hallway; a master bedroom with a built-in double wardrobe, an ensuite with a level access shower. From hallway; a second bedroom with built-in single cupboard, cupboard housing a Worcester Combi-boiler. Off hallway; a family bathroom with a bath. Wildwood Court has an internal corridor leading to the Mansion House. There is a wall mounted call monitor for emergency assistance and a personal alarm necklace to alert a first responder.

Cedars Village sits in an idyllic spot set back from the main road amidst 22 acres of landscaped gardens. Built around the exclusive Grade II listed mansion house with its Victorian conservatory it boasts an unrivalled ambience. Excellent facilities provided include restaurant, Bistro, library, hobbies room, laundry, convenience store and croquet/putting lawn. Cedars Village provides comfort and security where community and lifestyle are of paramount importance.

Cedars Village is a haven for walkers, golfers and wildlife enthusiasts.

Packed full of amenities and features:

- Set within 22 acres of gardens, meadows and orchards
- Grade II Listed mansion
- Conservatory
- A packed calendar of resident events
- Woodland walks and games lawn

Neighbouring towns include Watford, Hemel Hempstead and High Wycombe, perfect for trips out and bustling shopping centres. With such easy travel links into London, take advantage of the many theatres, museums, concerts, shops and restaurants the city has to offer. Or head out to the Chiltern Hills for miles and miles of hiking and cycling trails, pubs and farm shops.

