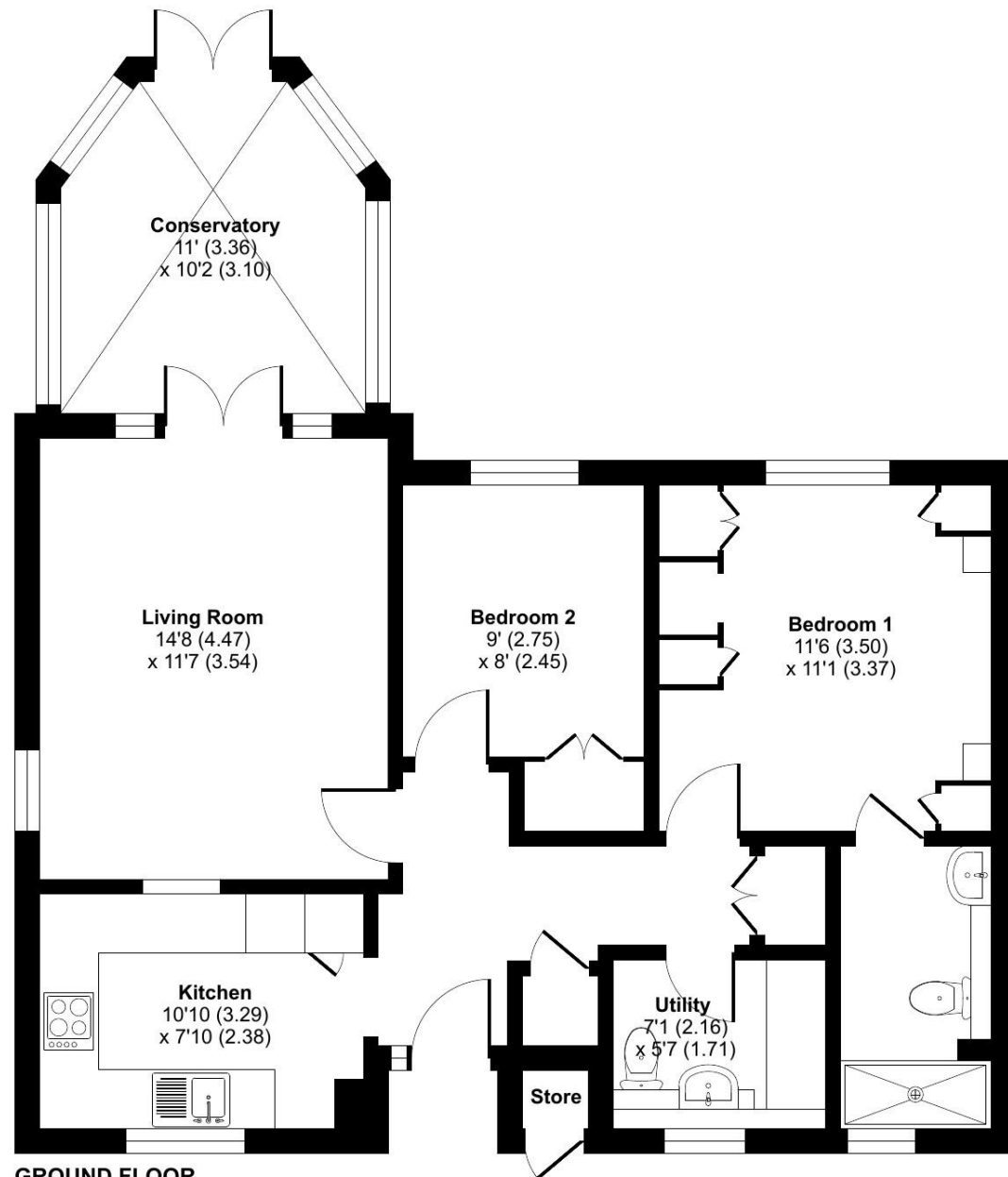


**Fairlop Walk, Elmbridge Village, Cranleigh, GU6**



Approximate Area = 785 sq ft / 72.9 sq m  
 Store = 4 sq ft / 0.3 sq m  
 Total = 789 sq ft / 73.2 sq m  
 For identification only - Not to scale



**GROUND FLOOR**

Floor plan produced in accordance with RICS Property Measurement 2nd Edition, Incorporating International Property Measurement Standards (IPMS2 Residential). © ncheom 2025. Produced for Retirement Security Limited. REF: 1349598

**Talk to the team today to find out more:**

01483 672 629  
 ElmbridgeVillageSales@retirementvillages.co.uk

Elmbridge Village  
 Cranleigh  
 Surrey  
 GU6 8TR



# Elmbridge Village

RETIREMENT  
 VILLAGES

*Friendly and Engaging with  
 Amenities to suit all..*



## 10 Fairlop Walk

*A two bedroom semi-detached bungalow in an enviable position within Elmbridge Village offering open countryside views*

**£499,500**

Other charges apply

**Leasehold**



2 Bedrooms



2 Bathrooms



Bungalow



Conservatory

*Key features:*

- Edge of village location
- Recently modernised
- Master bedroom with en suite
- EPC Rating: C



One of a very few semi-detached two bedroom bungalows with a conservatory in Elmbridge. The spacious hallway leads to: recently modernised fully fitted kitchen with a range of gloss grey eye and base units with complementary worktops with integrated slimline dishwasher, electric double oven and electric hob. Space for American style fridge freezer. Sitting room with double doors to the conservatory offering far reaching views across neighbouring countryside. Master bedroom with fitted wardrobes, ceiling fan and en suite shower room with double shower, wash hand basin and wc. Second bedroom. Cloakroom/utility room with wc, wash hand basin and space for washing machine and tumble dryer.

Elmbridge is a well-established village with 276 homes, including bungalows and apartments, set within in 27 acres of landscaped grounds. Located near the charming Cranleigh village, Elmbridge offers residents a range of amenities such as a restaurant, a lively bar, village hall, hair salon, croquet lawn, on-site store, library, and regular doctor's surgeries. Those with green fingers can enjoy our lively allotments, and there's a beautiful walking meadow and daily bus service for a well-rounded lifestyle.

## Elmbridge Village is a thriving community where you can join in everything, or just simply sit back and relax.

*Packed full of amenities and features:*

- Nature walk and allotments
- On site restaurant, bar and lounge
- A village shop
- Wellness centre
- Hair salon
- A packed calendar of resident events

Elmbridge Village is just outside Cranleigh, eight miles southeast of Guildford. It has a vibrant high street made up of independent shops, cafés, restaurants and typical amenities such as supermarkets, leisure and health centres. From festivals and arts to the Cranleigh Bowls Club and the Cranleigh Cricket Academy, there is plenty going on year round.

