

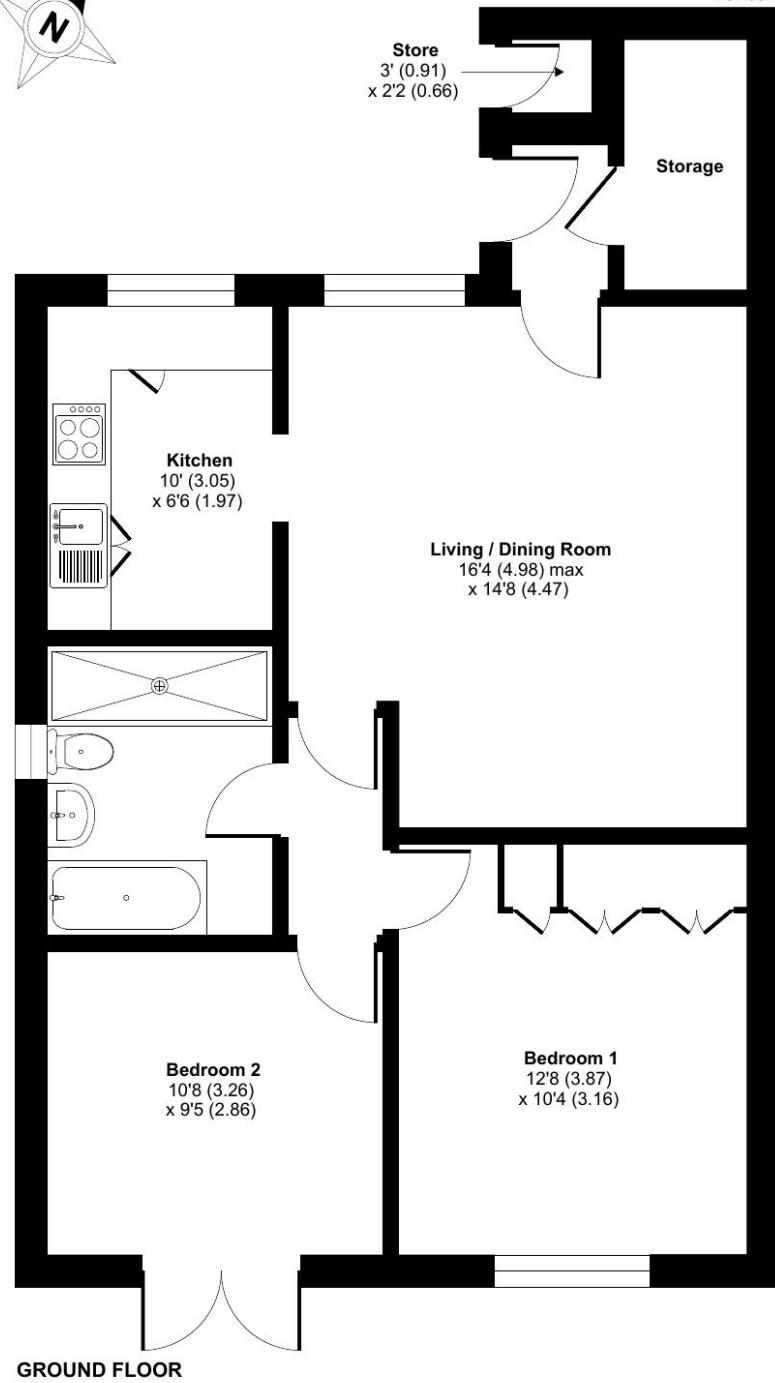
Day Court, Cranleigh, GU6

Approximate Area = 682 sq ft / 63.3 sq m

Outbuilding = 6 sq ft / 0.5 sq m

Total = 688 sq ft / 63.8 sq m

For identification only - Not to scale



Floor plan produced in accordance with RICS Property Measurement 2nd Edition, incorporating International Property Measurement Standards (IPMS2 Residential). © nchecon 2026. Produced for RV Services Limited (Retirement Villages). REF: 1419806

Talk to the team today to find out more or to arrange a visit:

01483 672 629 | ElmbridgeVillageSales@retirementvillages.co.uk



IRC | Integrated Retirement Community



Elmbridge Village

RETIREMENT VILLAGES

Elmbridge Village is a thriving community where you can join in everything, or simply relax.

10 Day Court



A spacious two-bedroom property convenient for all the amenities Elmbridge offers



Apartment



2 Bedroom



1 Bathroom

Key features:

- Spacious two-bedroom apartment
- Modern fitted kitchen
- South facing patio
- EPC Rating: C

£270,000

Leasehold



Elmbridge Village is a thriving community where you can join in everything, or simply relax.

Elmbridge is just outside Cranleigh, eight miles southeast of Guilford. It has a vibrant high street made up of independent shops, cafes, restaurants and typical amenities such as supermarkets, leisure and health centres. From festivals and arts to the Cranleigh Bowls Club and the Cranleigh Cricket Academy, there is plenty going on year round.

Amenities and features:

- Nature walk and allotments
- On site restaurant, bar and lounge
- A village shop
- Wellness centre
- Hair salon
- A packed calendar of events

The apartment benefits from level access throughout and offers a welcoming living/dining room with views across the communal gardens. The modern fitted kitchen has cream gloss cabinets and a complementary work surface, with plumbing for a washer-dryer, an integrated oven, and a fridge freezer. The master bedroom features a range of fitted wardrobes, and there is a second bedroom with doors leading to a south-facing patio. The bathroom has a contemporary suite with a large walk-in shower, WC, wash hand basin, and a separate bath.

Elmbridge is a well-established village with 276 homes, including bungalows and apartments, set within in 27 acres of landscaped grounds. Located near the charming Cranleigh village, Elmbridge offers residents a range of amenities such as a restaurant, a lively bar, village hall, hair salon, croquet lawn, on-site store, library, and regular doctor's surgeries. Those with green fingers can enjoy our lively allotments, and there's a beautiful walking meadow and daily bus service for a well-rounded lifestyle.

