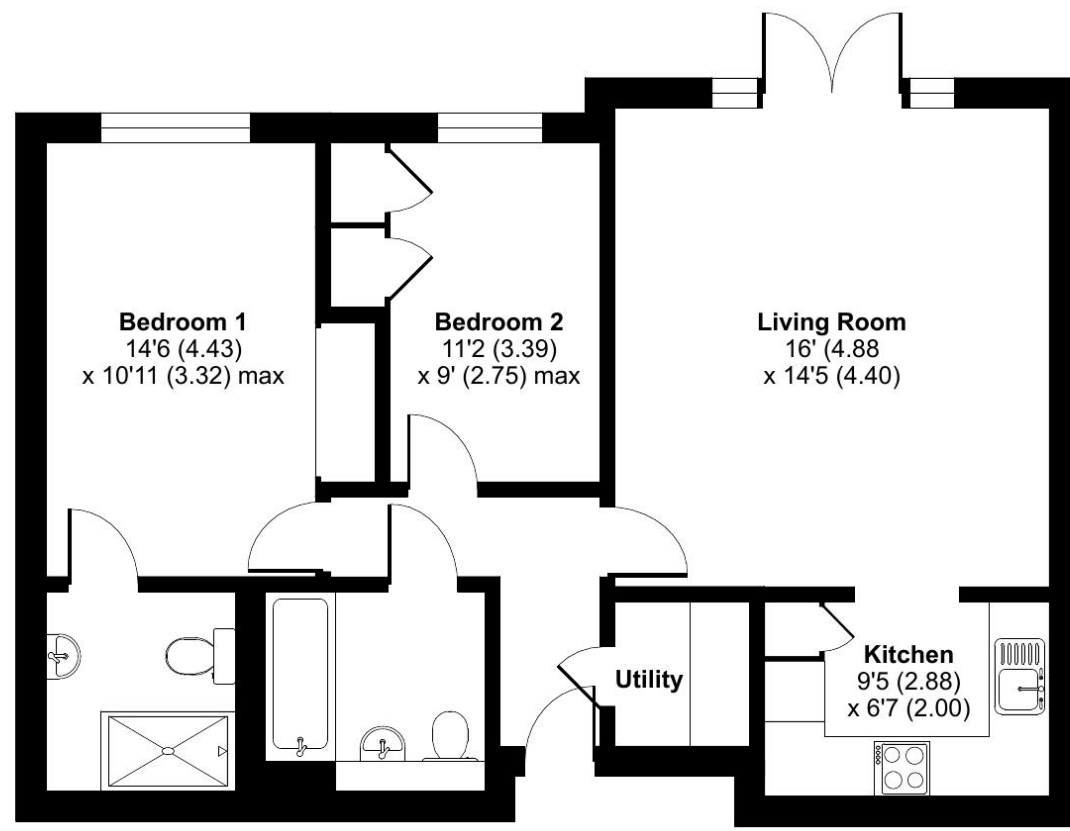


**Cedars Village, Chorleywood, Rickmansworth, WD3**

Approximate Area = 730 sq ft / 67.8 sq m  
For identification only - Not to scale



GROUND FLOOR

Talk to the team today to find out more or to arrange a visit:

01923 913 871 | [CedarsVillageSales@retirementvillages.co.uk](mailto:CedarsVillageSales@retirementvillages.co.uk)



© IRC | Integrated Retirement Community



# Cedars Village

RETIREMENT VILLAGES

*Cedars Village is a haven for walkers, golfers and wildlife enthusiasts.*

## 1 Homewood Court



*A newly refurbished ground floor apartment in Homewood Court with a private patio.*



Apartment



2 Bedrooms



2 Bathrooms

### Key features:

- Newly refurbished
- Ground floor apartment with patio
- En-suite to master bedroom
- EPC Rating: C

**£410,000**  
**Leasehold\***

# Cedars Village is a haven for walkers, golfers and wildlife enthusiasts.

Neighbouring towns include Watford, Hemel Hempstead and High Wycombe, perfect for trips out and bustling shopping centres. With such easy travel links into London, take advantage of the many theatres, museums, concerts, shops and restaurants the city has to offer. Or head out to the Chiltern Hills for miles and miles of hiking and cycling trails, pubs and farm shops.

## *Amenities and features:*

- Set within 22 acres of gardens, meadows and orchards
- Grade II Listed mansion
- Conservatory
- A packed calendar of resident events
- Woodland walks and games lawn



Own front door to; Entrance hall: a walk-in utility cupboard with Beko washer/dryer and worktop space. Wall mounted call monitor system to 24 hour assistance. A bright, south west spacious sitting room with French doors leading to the garden. The open plan, fully fitted kitchen is designed with convenience in mind with a range of fitted units, Lamona integrated appliances including a fridge/freezer and dishwasher, an induction hob and a Neff built-in eye level oven. Bedroom One with rear aspect window, built-in double wardrobes with sliding doors, En-Suite shower room with walk in shower. Bedroom Two with rear aspect window, built-in single wardrobe, further cupboard housing a Glow-worm Combi-Boiler. Off hallway; family bathroom with a bath. Outside; small garden space with patio area.

Cedars Village set in 22 acres is built around the exclusive Grade II listed mansion house the focal point of the community providing facilities which include the Victorian conservatory, bistro, restaurant, library, hobbies room, laundry, convenience store and a weekly doctor surgery. Communal entrance hall via entry phone system.

