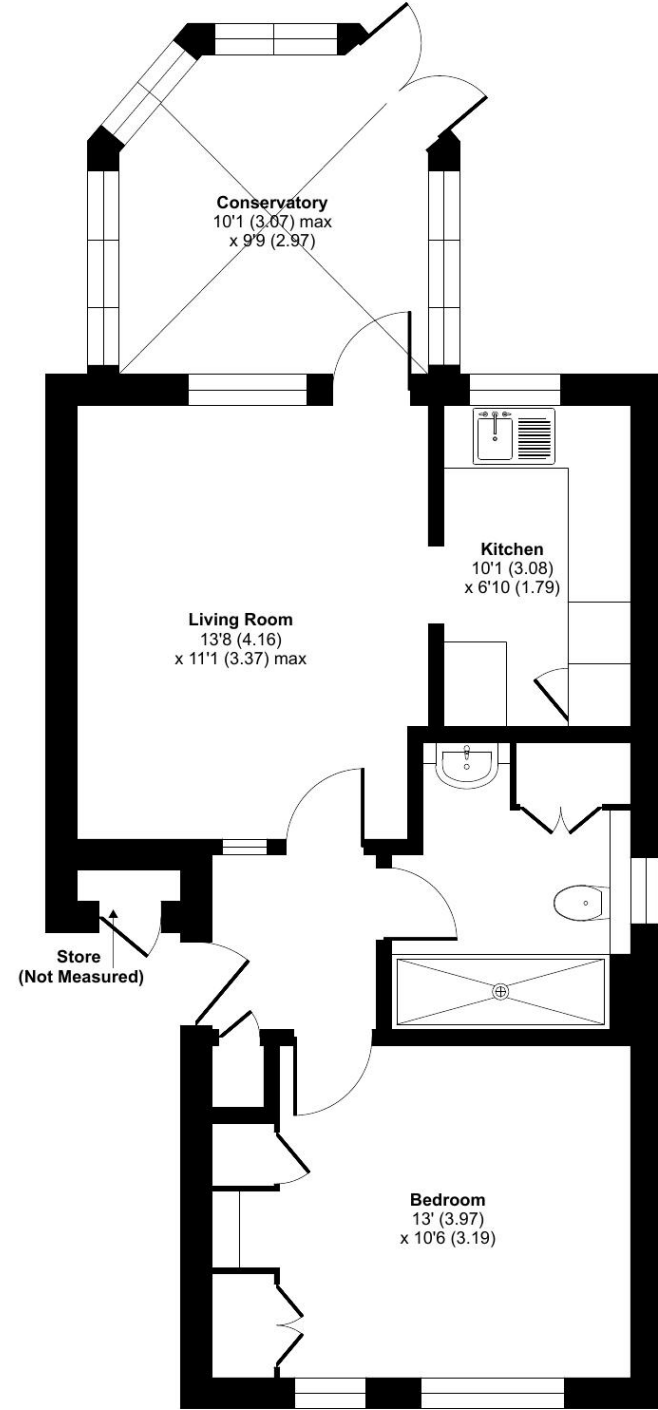


Furniss Court, Elmbridge Village, Cranleigh, GU6

Approximate Area = 561 sq ft / 52.1 sq m (excludes store)
For identification only - Not to scale



GROUND FLOOR

Talk to the team today to find out more or to arrange a visit:

01483 672 629 | ElmbridgeVillageSales@retirementvillages.co.uk



IRC | Integrated Retirement Community



Elmbridge Village

RETIREMENT VILLAGES

Elmbridge Village is a thriving community where you can join in everything, or simply relax.

1 FURNISS COURT



This charming one-bedroom bungalow, set within our peaceful retirement village, has been thoughtfully modernised to provide a very comfortable and easy-to-manage home.



Bungalow



1 Bedrooms



1 Bathrooms



Conservatory

Key features:

- Close to all amenities
- Thoughtfully modernised
- Ready to move into
- EPC Rating: C

£340,000

Leasehold*



Elmbridge Village is a thriving community where you can join in everything, or simply relax.

Elmbridge is just outside Cranleigh, eight miles southeast of Guilford. It has a vibrant high street made up of independent shops, cafes, restaurants and typical amenities such as supermarkets, leisure and health centres. From festivals and arts to the Cranleigh Bowls Club and the Cranleigh Cricket Academy, there is plenty going on year round.

Amenities and features:

- Nature walk and allotments
- On site restaurant, bar and lounge
- A village shop
- Wellness centre
- Hair salon
- A packed calendar of events

The property features a bright living room leading through to a conservatory, creating a light and welcoming space to relax or entertain. The light kitchen has been modernised with plenty of workspace and storage featuring integrated appliances including an eye level Bosch oven, Lamona hob and Bosch fridge freezer with views across the communal gardens. The shower room has been updated to a high standard with a practical layout and contemporary finish including a large shower with a pull-down seat and grab rails if needed. The double bedroom offers generous storage and a calm, cosy retreat. The curtains and blinds throughout are of a high quality and included within the sale.

With level access, low-maintenance accommodation and the conservatory overlooking attractive communal gardens, this bungalow is ideal for those seeking comfort, independence and a friendly community on the doorstep.

